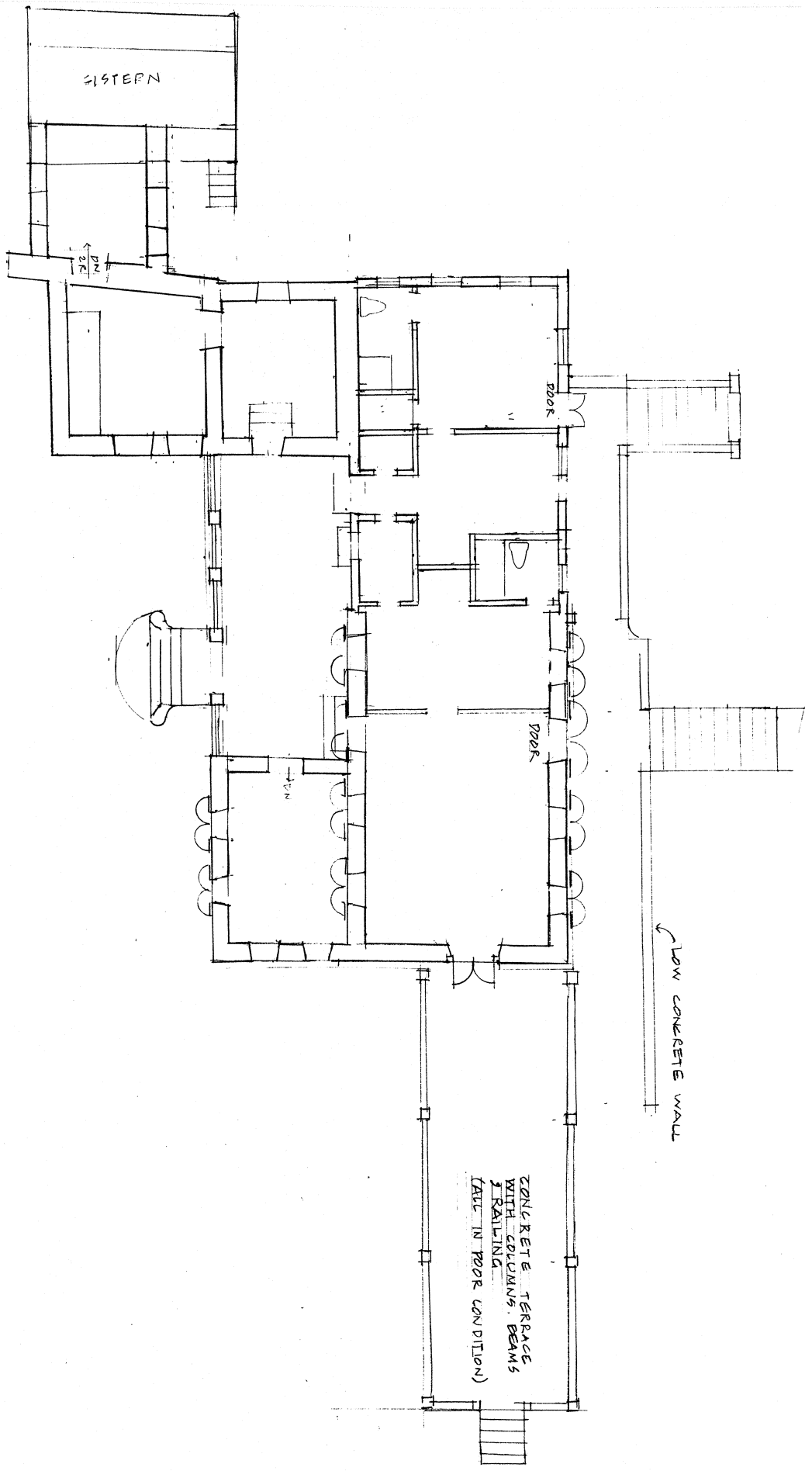
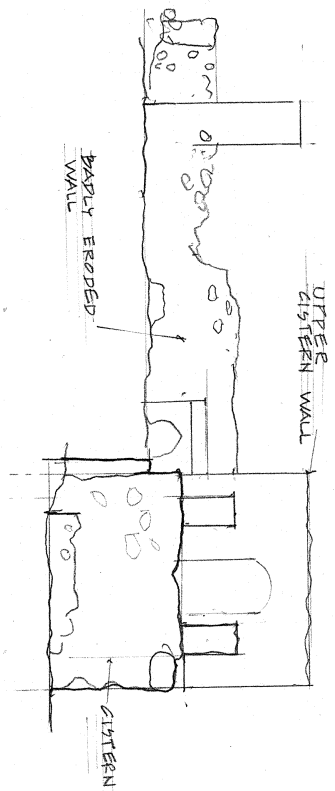


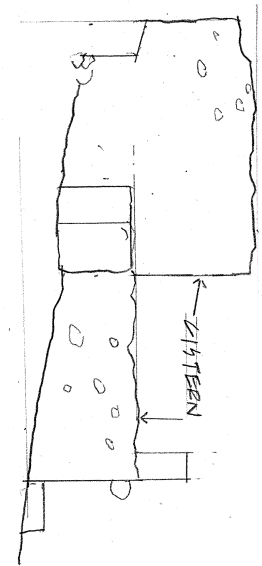
FLOOR PLAN  
 1/8" = 1'-0"



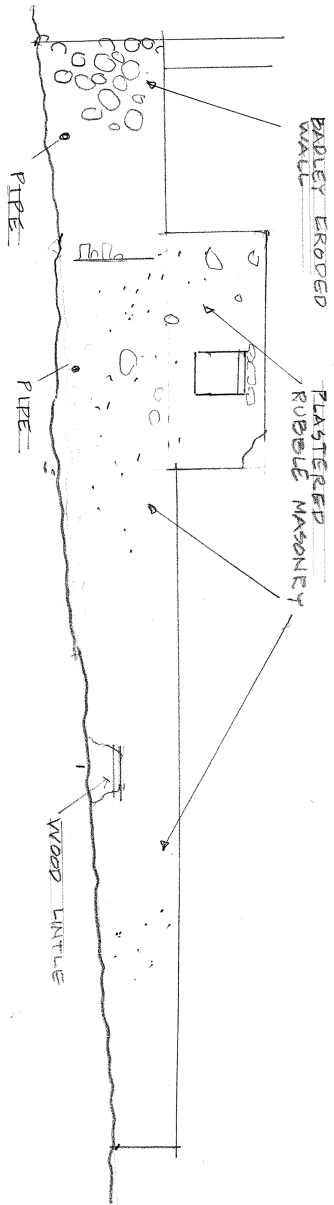
Lameshur Plantation GREAT HOUSE  
 ST JOHN, USVI 6/98 Bid B  
 Prepared by Caribbean Volunteer Expeditions, Box 388,  
 Coming, NY 14830 Volunteers: Hersh, Ross, Graf  
 For the USVI National Park Service



WEST ELEVATION A  
SCALE 1/8" = 1'-0"

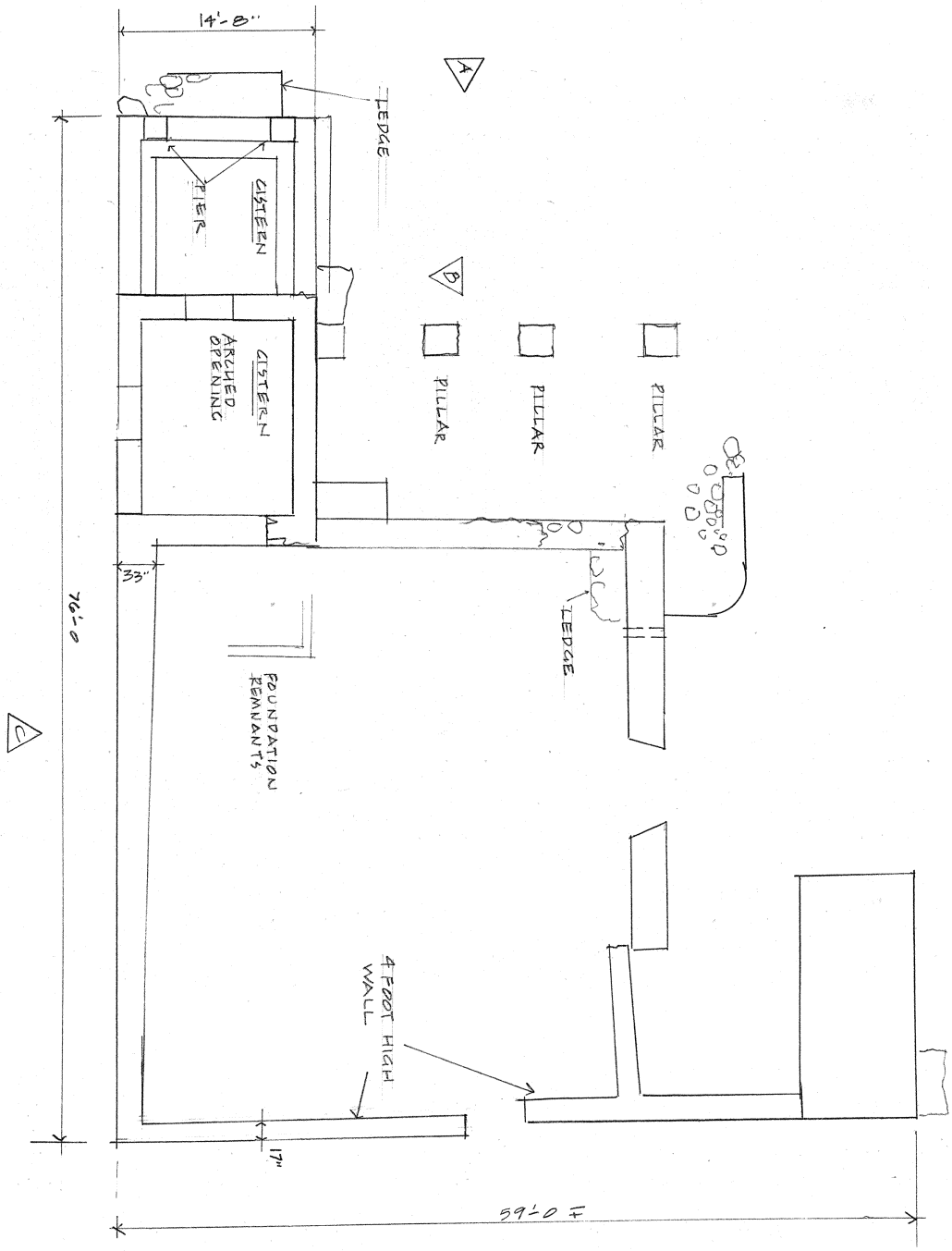


NORTH ELEVATION - CISTERNS B  
SCALE 1/8" = 1'-0"



SOUTH ELEVATION C  
SCALE 1/8" = 1'-0"

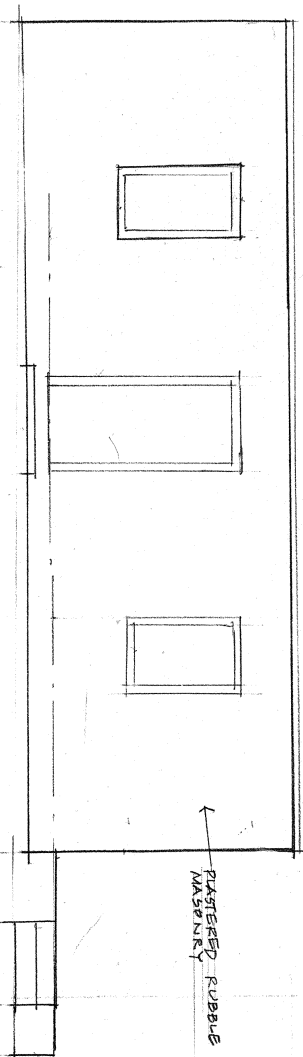
Lameshur Plantation Factory-Cistern  
ST JOHN, USVI 6/98 Bid E  
Prepared by Caribbean Volunteer Expeditions, Box 388,  
Coring, NY 14830 Volunteers: Hersh, Ross, Graf  
For the USVI National Park Service



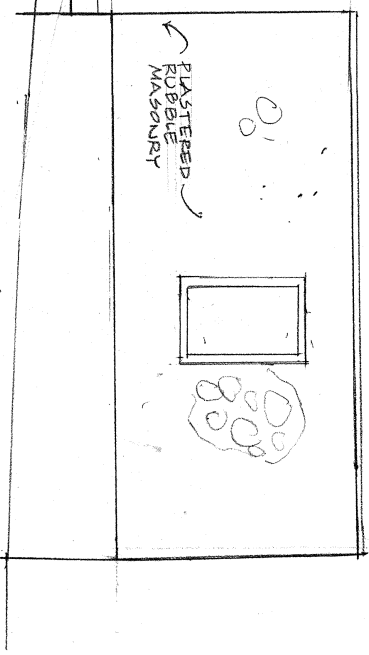
PLAN  
1/8" = 1'-0"

Lameshur Plantation 6/98 Factory-Cistern  
 ST JOHN, USVI Bid E  
 Prepared by Caribbean Volunteer Expeditions, Box 388,  
 Corning, NY 14830 Volunteers: Herish, Ross, Graf  
 for the USVI National Park Service

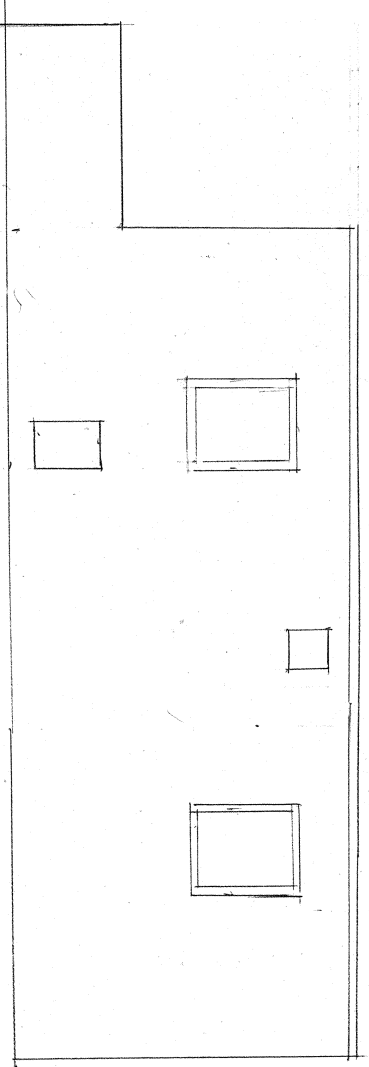
WEST ELEVATION  
1/4" = 1'-0"



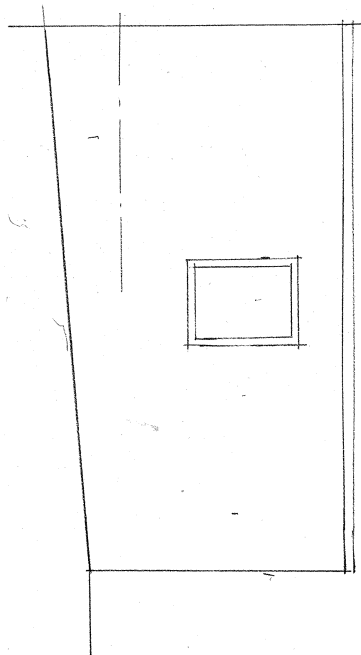
SOUTH ELEVATION  
1/4" = 1'-0"



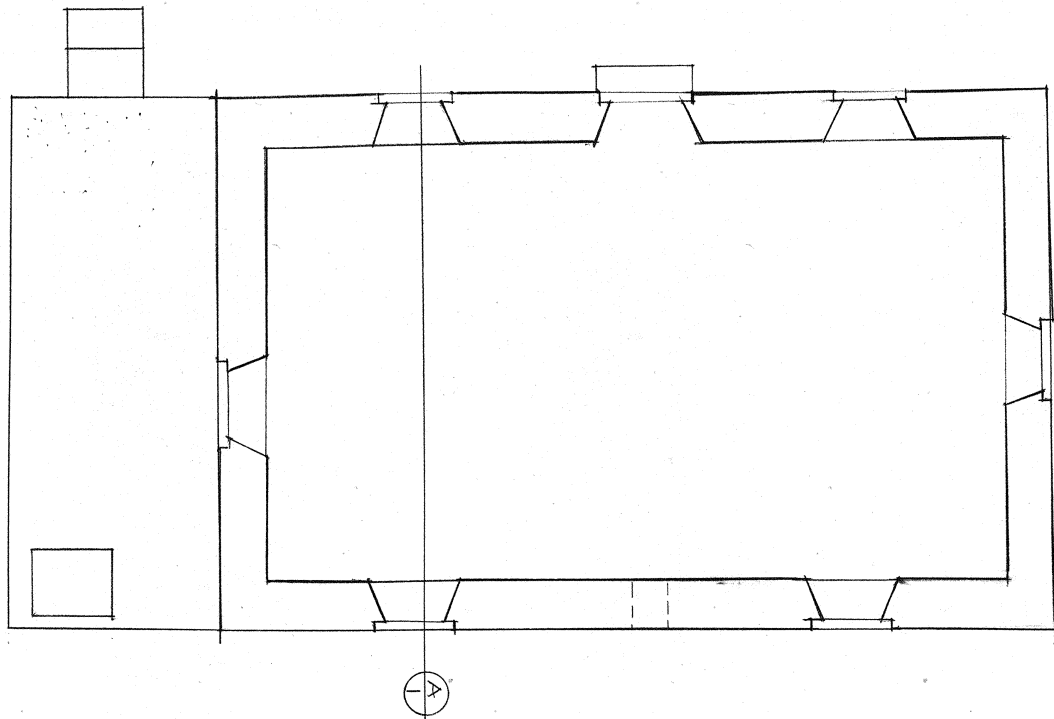
EAST ELEVATION  
1/4" = 1'-0"



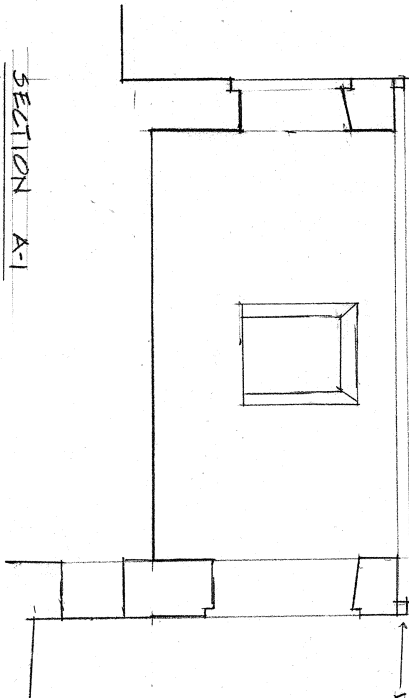
WEST ELEVATION  
1/4" = 1'-0"



Lanesbur Plantation RESIDENCE  
ST JOHN, USVI Bid C  
Prepared by Caribbean Volunteer Expeditions, Box 388,  
Corning, NY 14830 Volunteers: Hersh, Ross, Graf  
For the USVI National Park Service



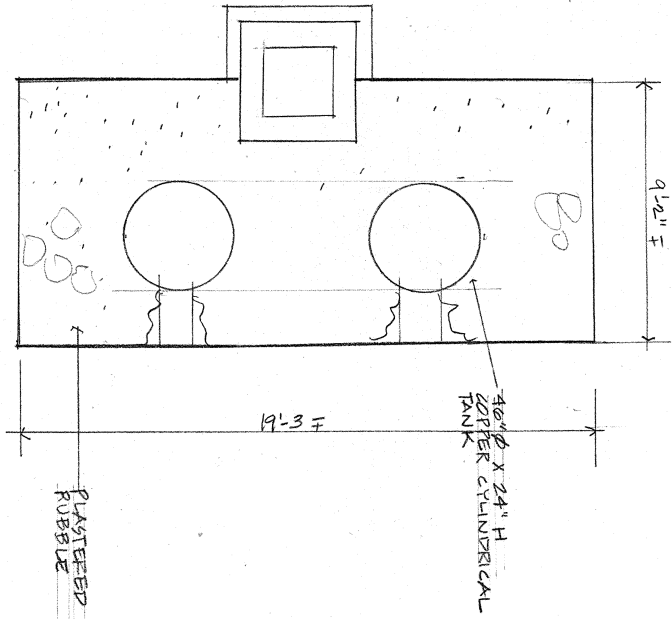
FLOOR PLAN  
SCALE 1/4" = 1'-0"



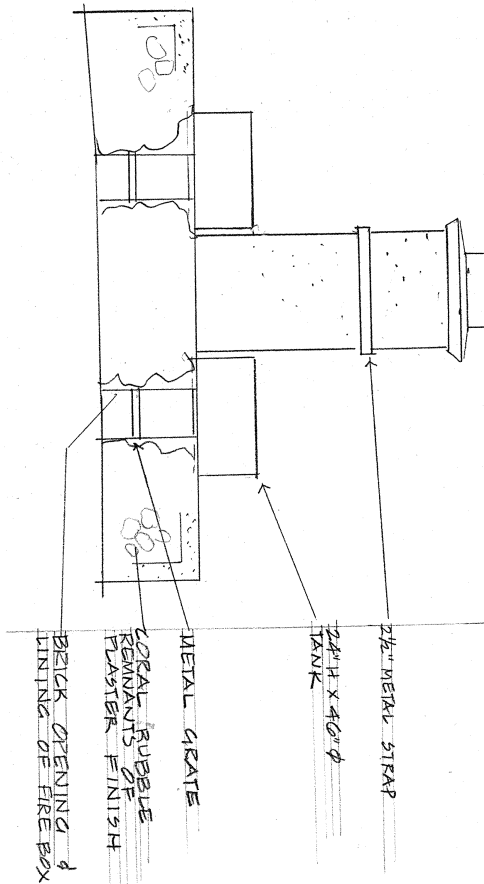
SECTION A-1  
SCALE 1/4" = 1'-0"

**Lameshur Plantation** RESIDENCE  
 ST JOHN, USVI 6/98 Bid C  
 Prepared by Caribbean Volunteer Expeditions, Box 388,  
 Corning, NY 14830 Volunteers: Hersh, Ross, Graf  
 For the USVI National Park Service

PLAN BAY ROOM STILL  
SCALE 1/4" = 1'-0"

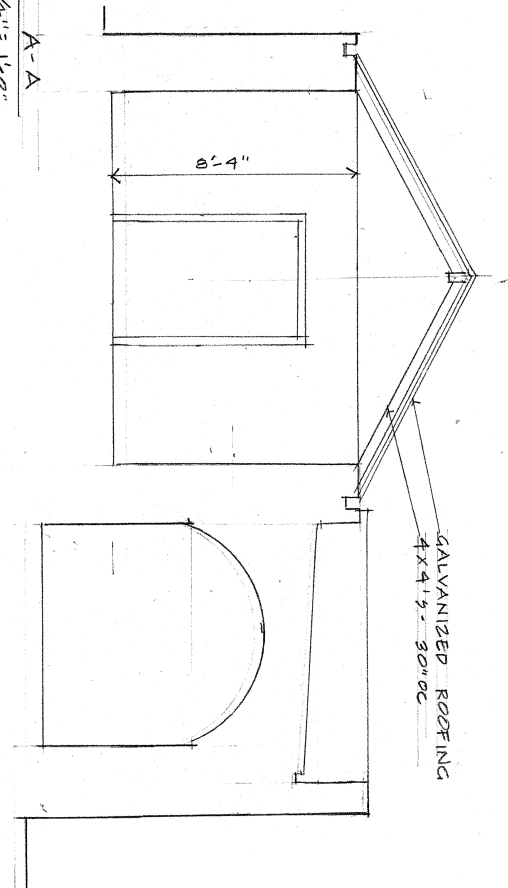


EAST ELEVATION  
SCALE 1/4" = 1'-0"

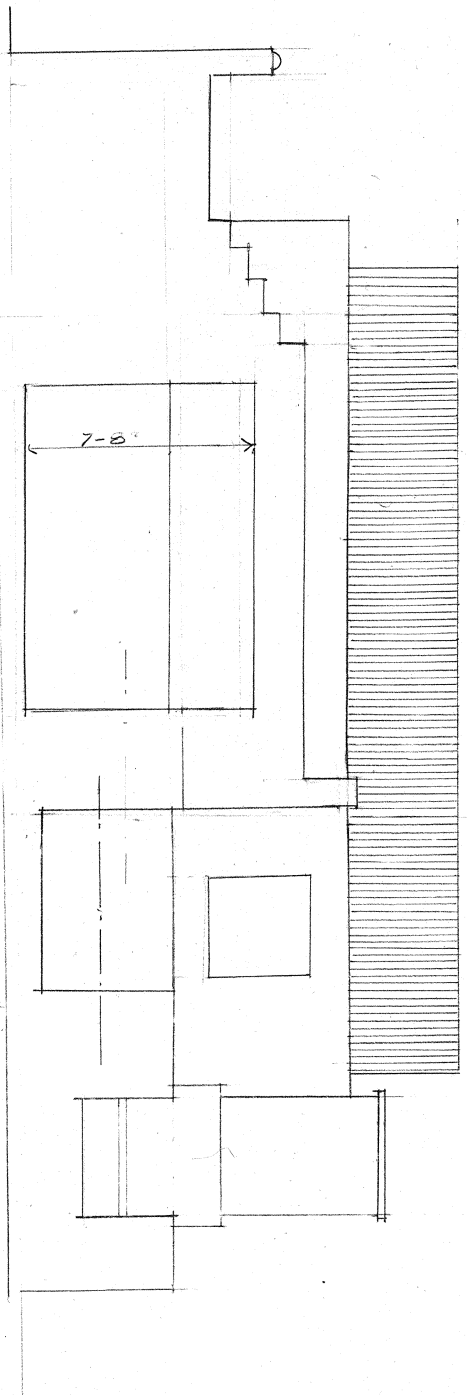


Lameshur Plantation BAY OIL STILL  
ST JOHN, USVI 6/98  
Prepared by Caribbean Volunteer Expeditions, Box 388,  
Coming, NY 14830 Volunteers: Hersh, Ross, Graf  
For the USVI National Park Service

SECTION A-A  
SCALE 1/4" = 1'-0"

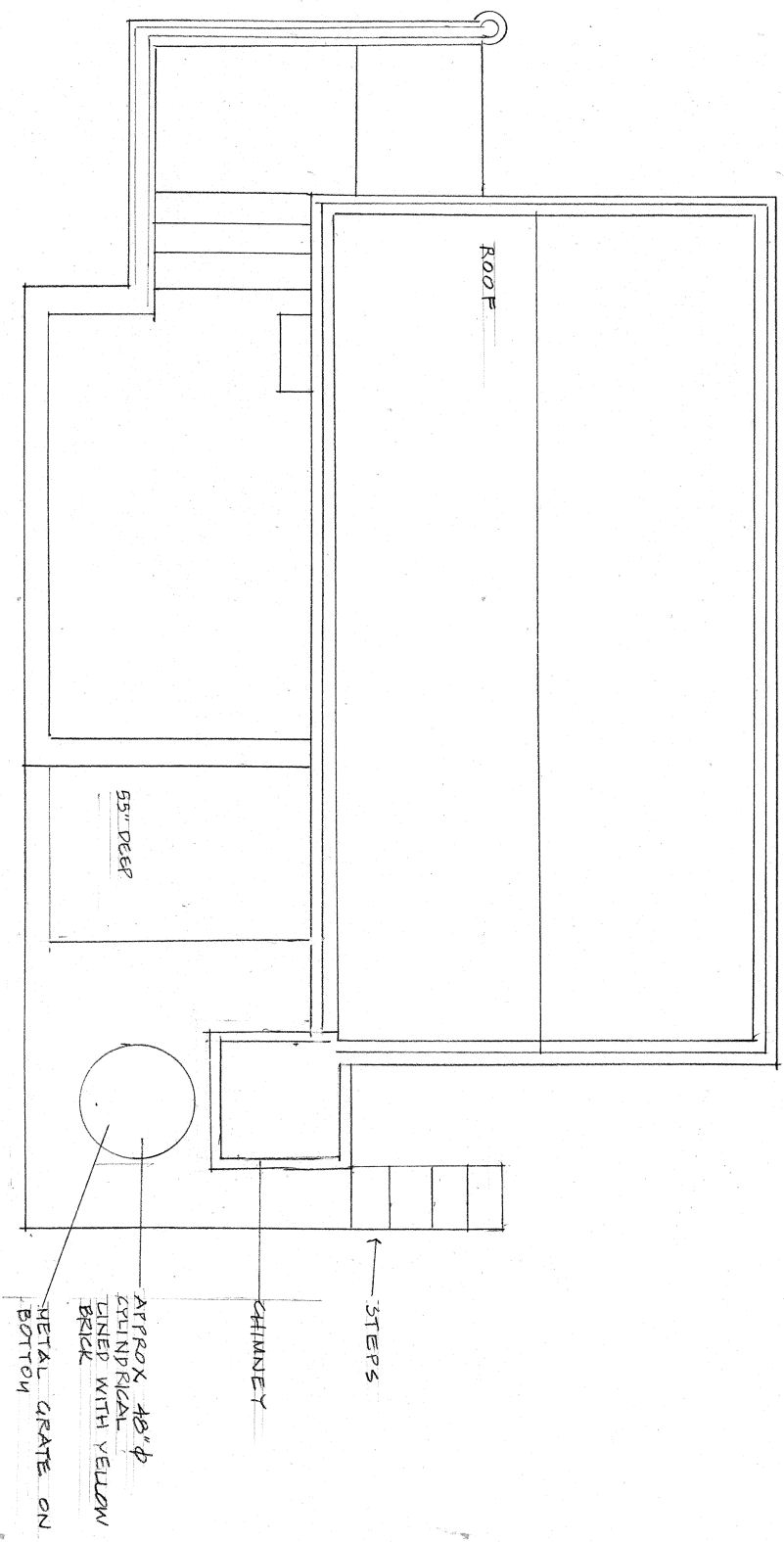


SECTION B-B  
SCALE 1/4" = 1'-0"

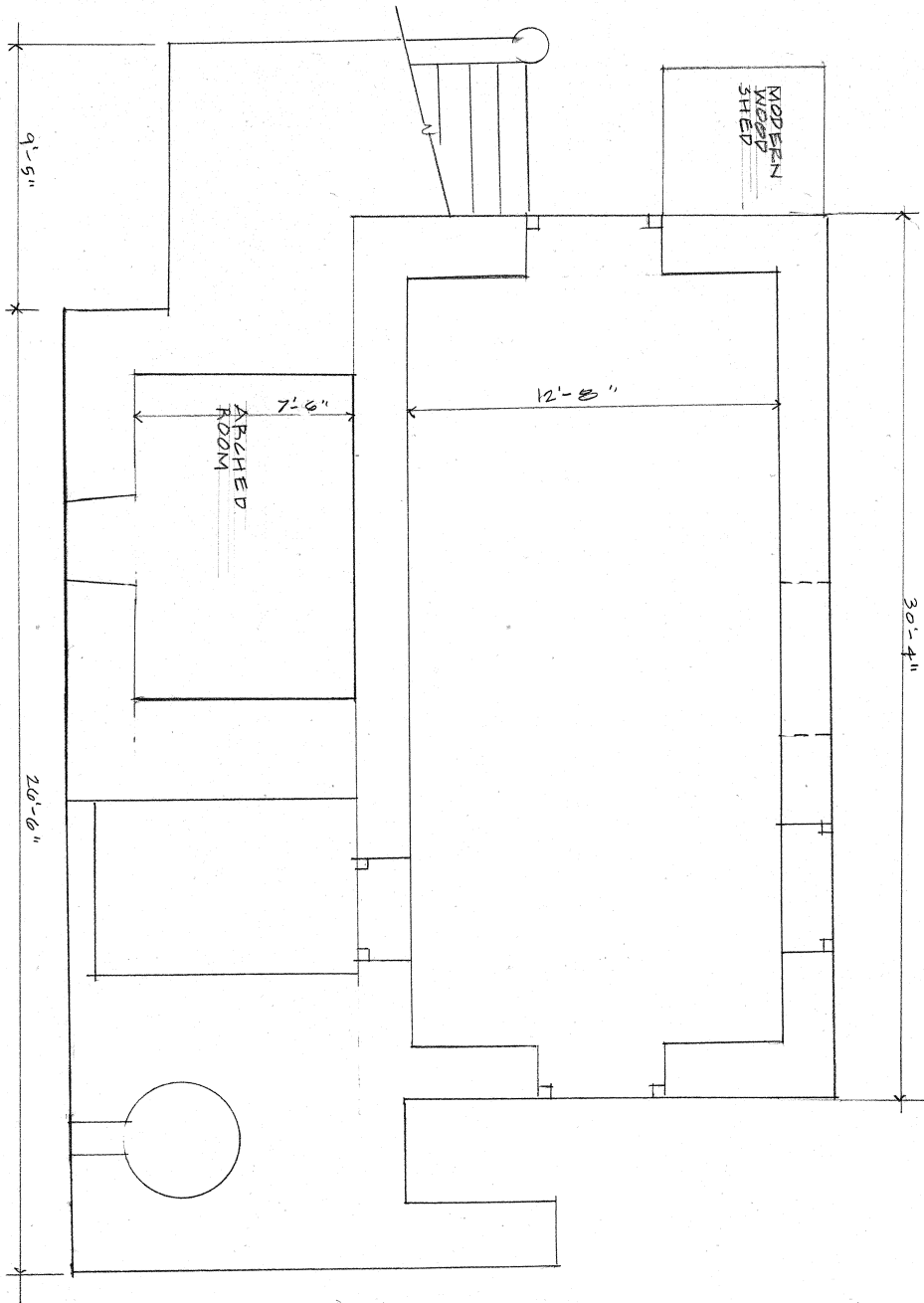


Lameshur Plantation Plantation House  
ST JOHN, USVI 6/98 BIDD  
Prepared by Caribbean Volunteers Expeditions, Box 388,  
Coring, NY 14830 Volunteers: Hersh, Koss, Graf  
For the USVI National Park Service

UPPER LEVEL PLAN  
SCALE 1/4" = 1'-0"



Lameshur Plantation Plantation House  
ST JOHN, USVI 6/98  
Prepared by Caribbean Volunteer Expeditions, Box 388,  
Coring, NY 14830 Volunteers: Hersh, Ross, Graf  
For the USVI National Park Service



LOWER LEVEL PLAN  
 SCALE 1/4" = 1'-0"

Lanesbur Plantation Plantation House  
 ST JOHN, USVI 6/98 Bid D  
 Prepared by Caribbean Volunteer Expeditions, Box 388,  
 Corning, NY 14830 Volunteers: Herish, Ross, Graf.  
 For the USVI National Park Service