

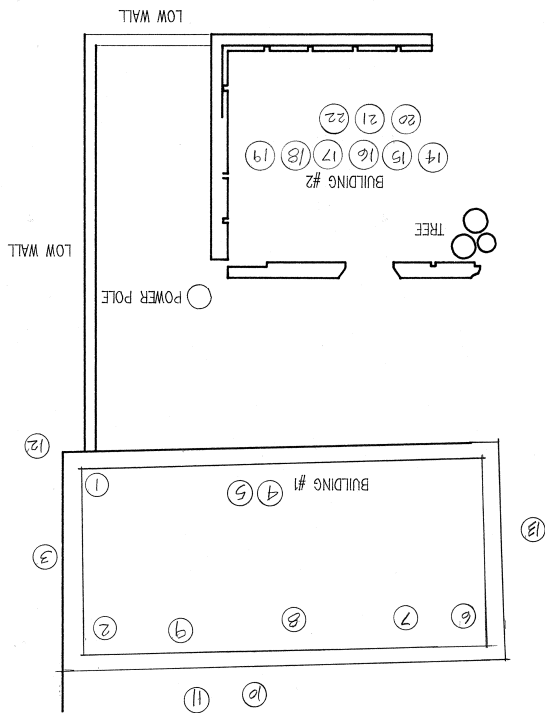
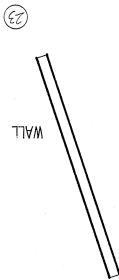
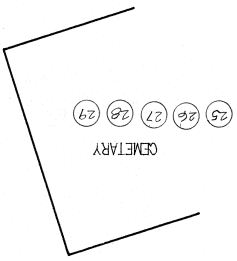
DUROLLOO SITE PLAN

1/8" = 1'-0" 1" = 20'

NOTE: THE SITE WAS VERY OVERGROWN,
RELATIONSHIPS SHOWN ON THESE
DRAWINGS ARE APPROXIMATE.

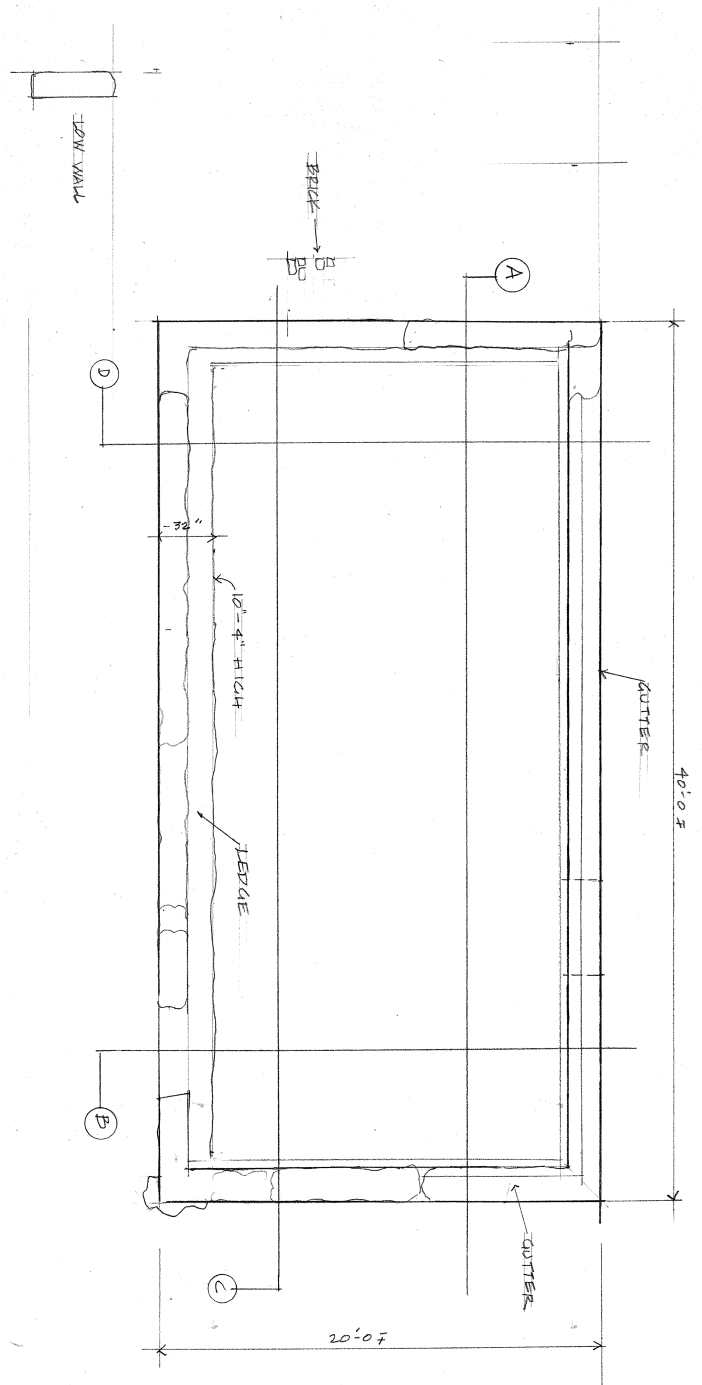


HIGHWAY

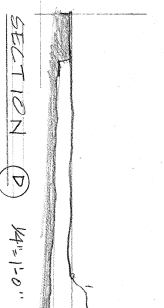
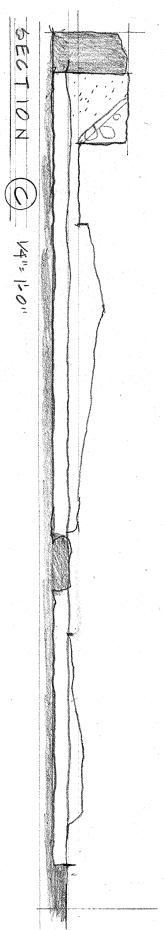
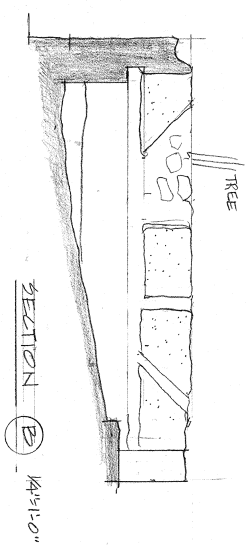
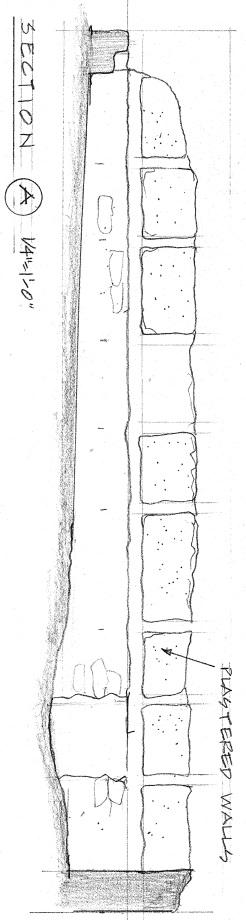
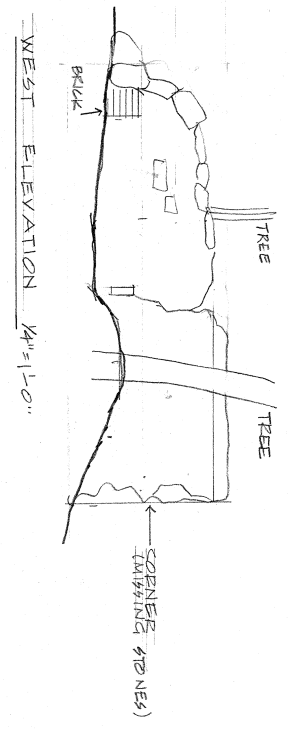
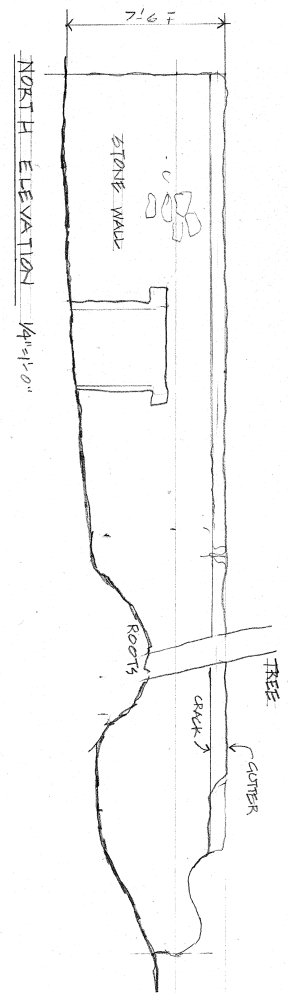


SITE PLAN - PHOTO KEY

DUROLLOO ESTATE - ST JOHN USVI	MARCH 1995
PREPARED FOR THE VIRGIN ISLANDS NATIONAL PARK AND HISTORICAL SOCIETY, ST JOHN	VOLUNTEERS
PREPARED BY CARIBBEAN VOLUNTEER EXPEDITIONS	SHEET
BOX 388 CORNING, NY 14830	



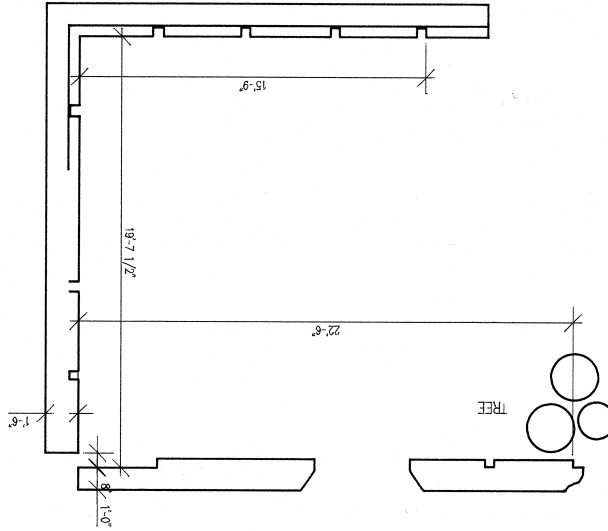
PLAN 1/4"=1'-0"



BUILDING # 1	
DURLEIGH ESTATE ST JOHN USVI	
PREPARED FOR THE	
VIRGIN ISLANDS NATIONAL PARK	
AND HISTORICAL SOCIETY ST JOHN	
PREPARED BY	
CARIBBEAN VOLUNTEER EXPEDITIONS	
BOX 388 CORNING, NY 14830	
MARCH 1995	VOLUNTEERS
1/1	CP
1/1	AS
	SHEET



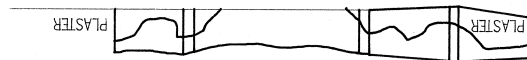
FLOOR PLAN BUILDING #2 DUURLOO
1/4" = 1'-0"



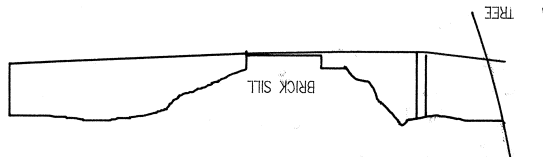
INTERIOR VIEW SOUTH ELEVATION
1/4" = 1'-0"



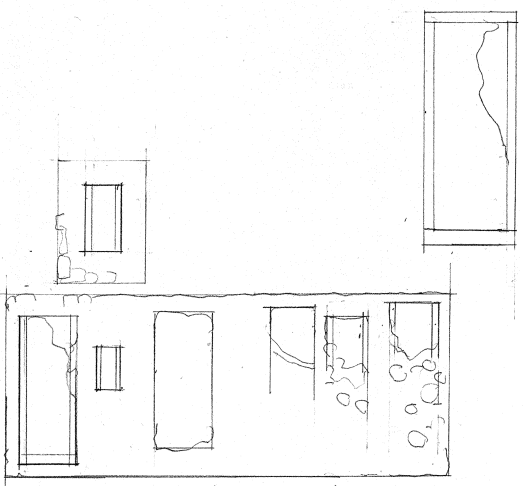
INTERIOR VIEW EAST ELEVATION
1/4" = 1'-0"



INTERIOR VIEW NORTH ELEVATION
1/4" = 1'-0"



BUILDING #2	MARCH 1995
DUURLOO ESTATE ST JOHN USVI	VOLUNTEERS
PREPARED FOR THE	
VIRGIN ISLANDS NATIONAL PARK	
AND HISTORICAL SOCIETY ST JOHN	
PREPARED BY	
CARIBBEAN VOLUNTEER EXPEDITIONS	
BOX 388 CORNING, NY 14830	
	SHEET



PLAN 1/4"



CEMETERY	
DURLOO ESTATE, ST. JOHN, USVI	MARCH 199
PREPARED FOR THE	VOLUNTEERS
VIRGIN ISLANDS NATIONAL PARK	
AND HISTORICAL SOCIETY, ST. JOHN	
PREPARED BY	
CARIBBEAN VOLUNTEER EXPEDITIONS	
BOX 388 CORNING, NY 14830	
	SHEET