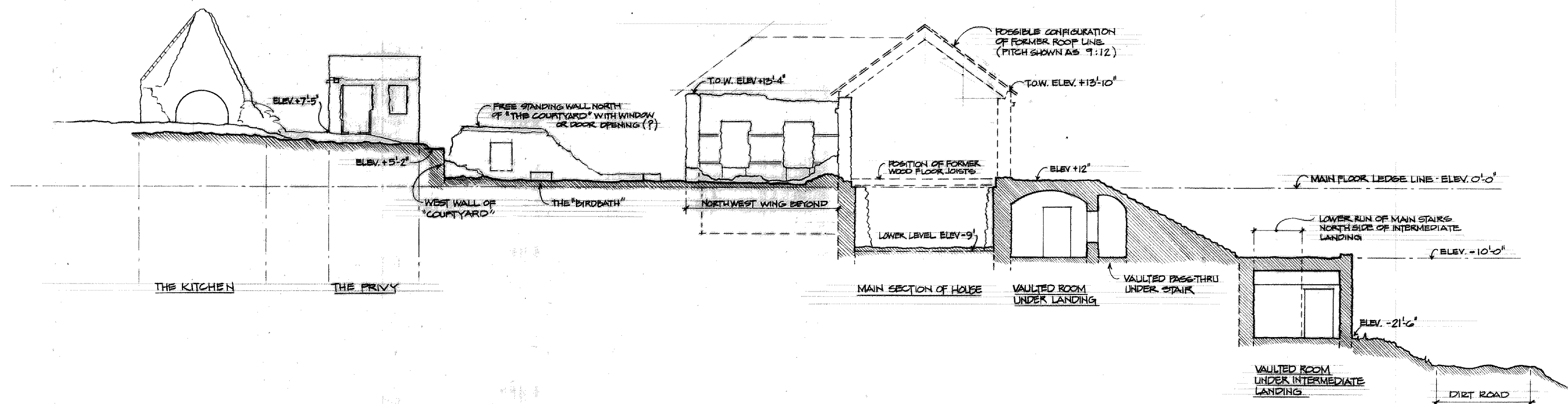


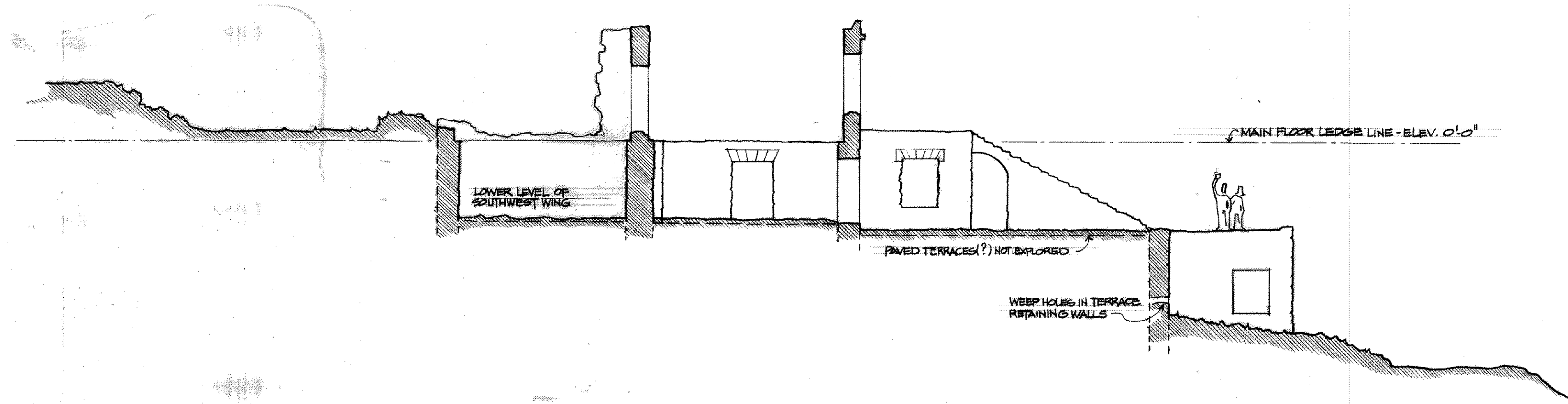
SITE PLAN

SCALE: 1" = 10'  
 0 5 10 15 20

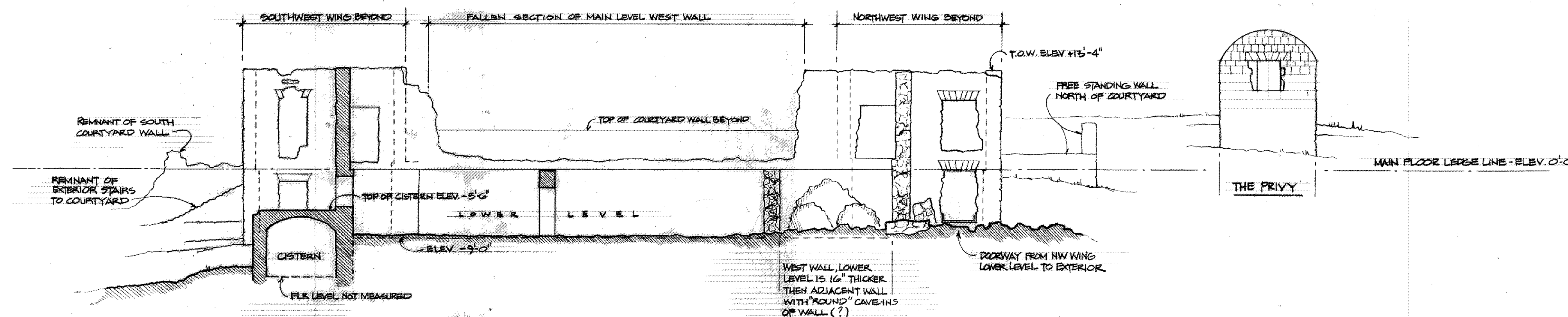
<b>SITE PLAN</b>	
<b>EDEN BROWN PLANTATION GREATHOUSE • NEVIS • NOV. '98</b>	
MEASURED DRAWINGS PREPARED FOR: NEVIS HISTORICAL AND CONSERVATION SOCIETY	
PREPARED BY: CARIBBEAN VOLUNTEER EXPEDITIONS, BOX 300 CORNHILL, N.Y. 14820 AND ELDERHOSTEL, INC.	
PARTICIPANTS: GUY, A. HERGEN, S. GORDON, S. SCHLENGER, M. SEIGER, VOST, F. VOST, ELDERHOSTEL: B. S. BRYAN, C. E. LEBLANC, M. KAUFMAN, H. KAUFMAN, H. MERLE, M. STAPLES, P. SULLIVAN	
DWS. NO.	<b>1</b>
	1 of 6



SECTION A-A



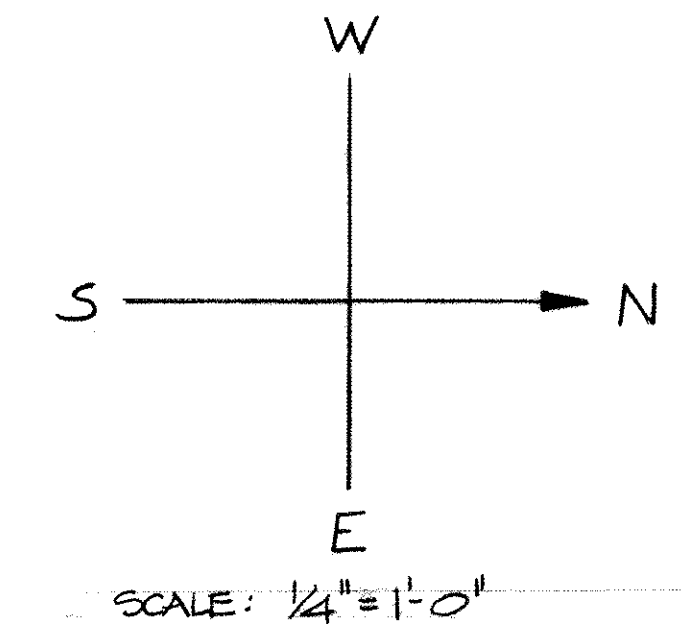
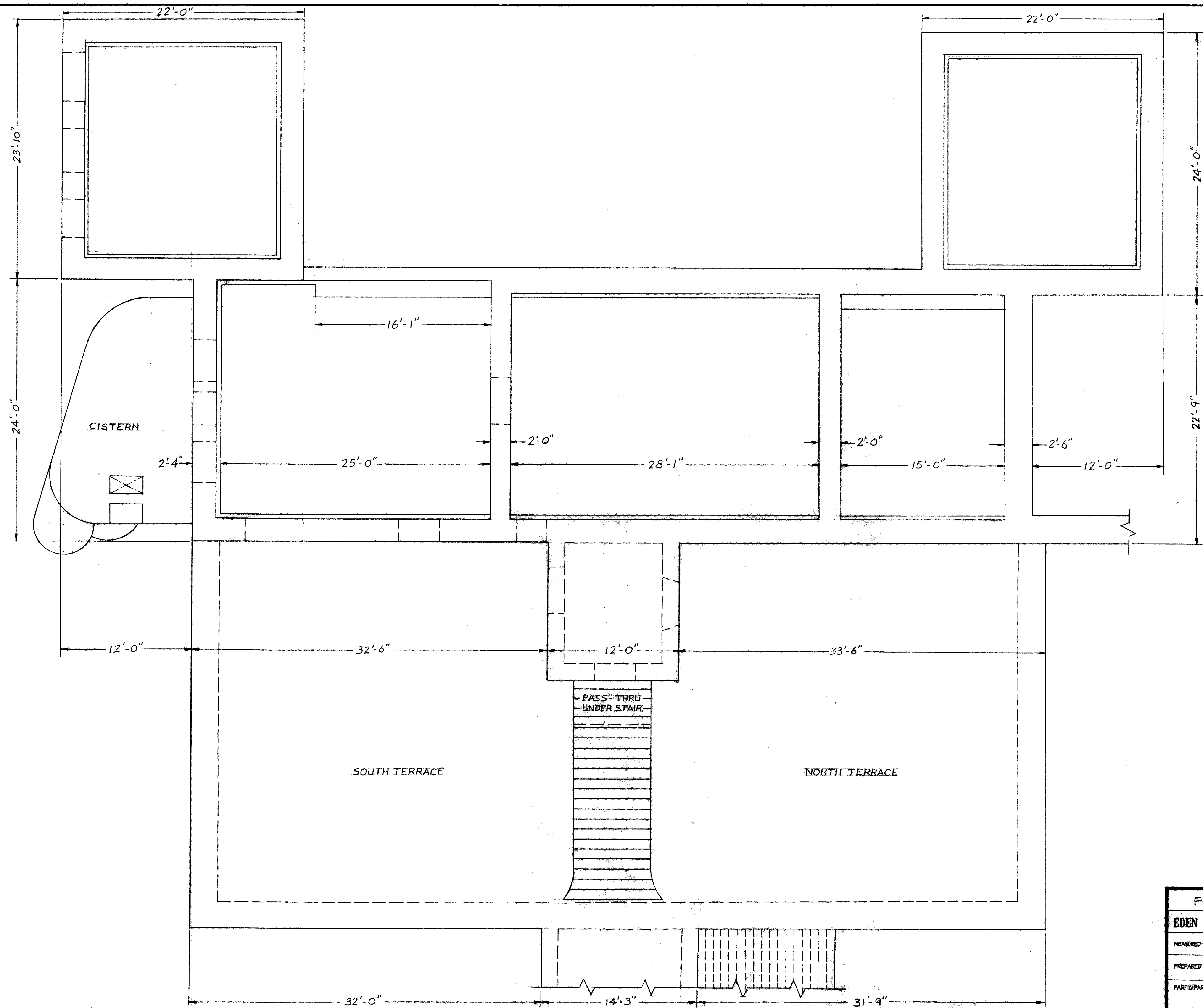
SECTION B-B



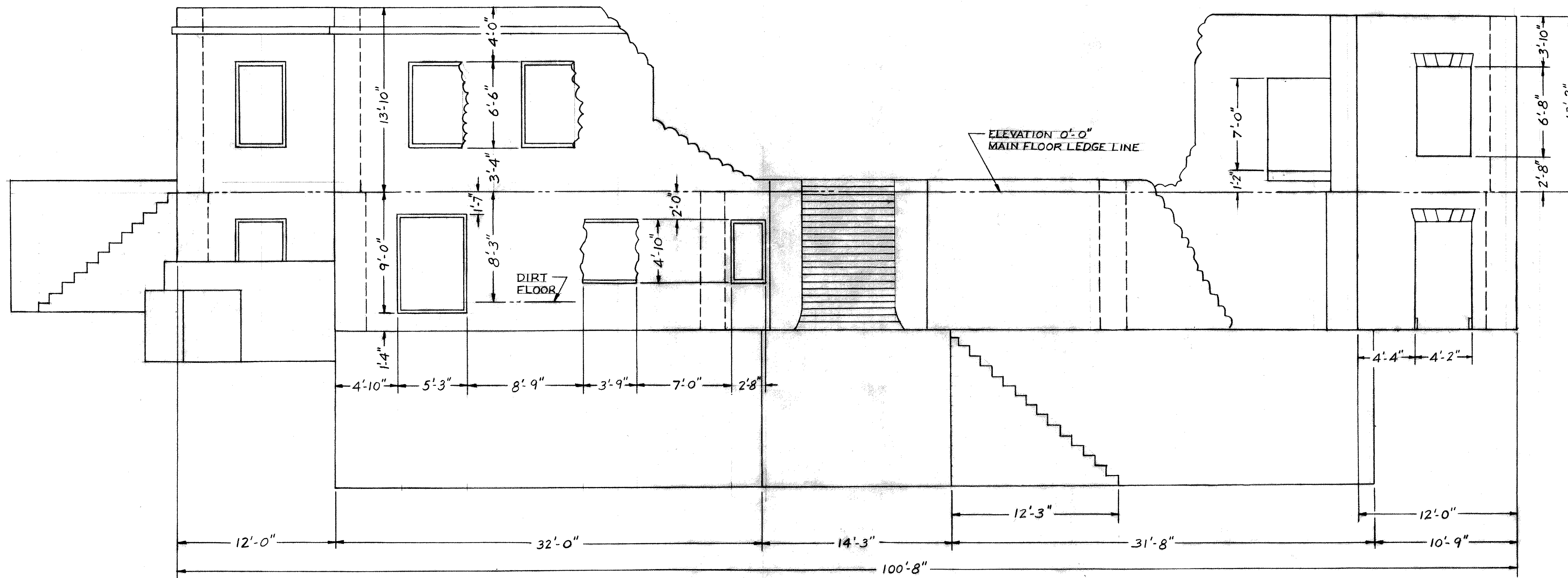
SECTION C-C

SCALE: 1" = 10'

SECTIONS THRU SITE & STRUCTURES	
EDEN BROWN PLANTATION GREATHOUSE • NEVIS • NOV.'98	
MEASURED DRAWINGS PREPARED FOR: NEVIS HISTORICAL AND CONSERVATION SOCIETY	
PREPARED BY: CARIBBEAN VOLUNTEER EXPEDITIONS, BOX 380 CORNING, N.Y. 14830 AND ELDERHOSTEL, INC.	DWG. NO.
PARTICIPANTS: GUY A. HERSH, S. GORDON, S. CALENSGOTER, M. BEISSER, VOST, F. VOST, ELDERHOSTEL, B. SILVERMAN, C. SILVERMAN, M. KAUFMAN, M. KAUFMAN, M. MERLE, M. STAPLES, P. SULLIVAN.	2 2 of 6



FLOOR PLAN - GREATHOUSE	
EDEN BROWN PLANTATION GREATHOUSE • NEVIS • NOV.'98	
MEASURED DRAWINGS PREPARED FOR: NEVIS HISTORICAL AND CONSERVATION SOCIETY	
PREPARED BY: CARIBBEAN VOLUNTEER EXPEDITIONS, BOX 300 CORNING, N.Y. 14830 AND ELDERHOSTEL, INC.	DWG. NO. 3
PARTICIPANTS: GYE, A. HERSH, S. GORDON, S. SOLENIKOFFER, M. BEISER VOST, F. VOST, ELDERHOSTEL, B. GILBRAN, C. E. GILBRAN, M. KAUFMAN, H. KAUFMAN, M. MERLE, N. STAPLES, P. SULLIVAN.	3 of 6



**EAST ELEVATION - GREATHOUSE**

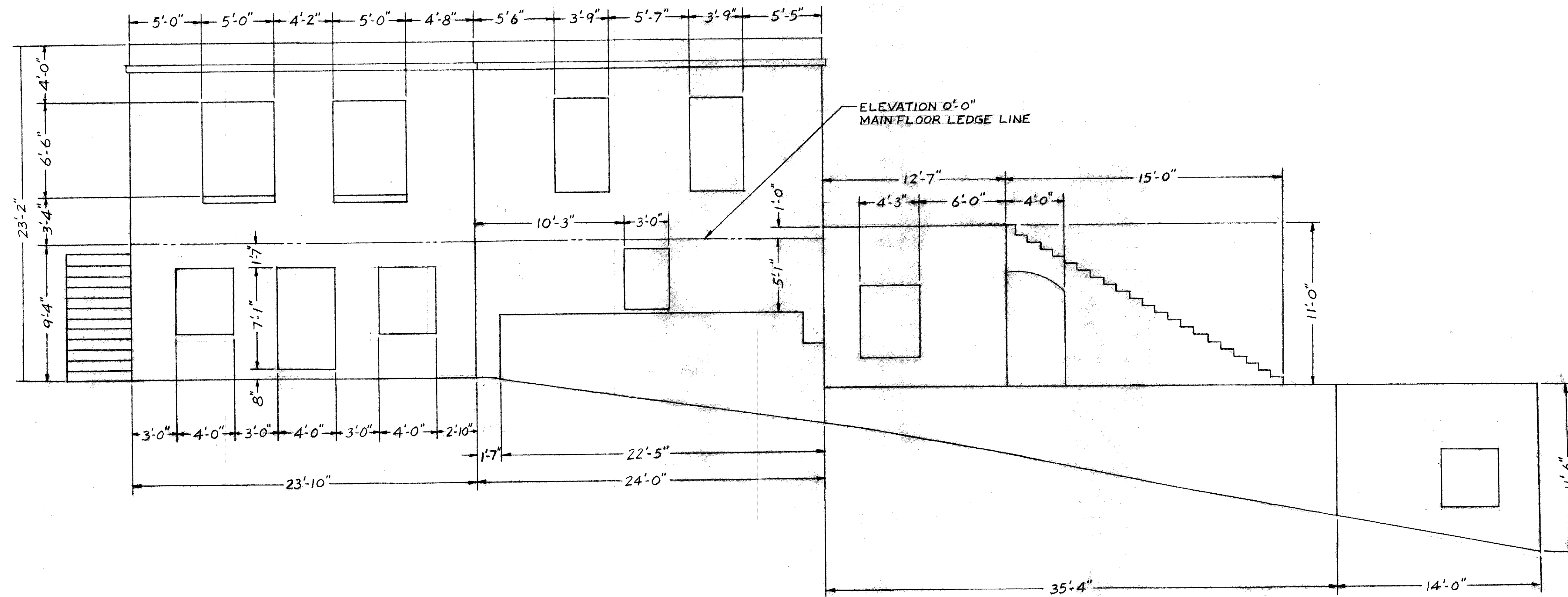
**EDEN BROWN PLANTATION GREATHOUSE • NEVIS • NOV.'98**

MEASURED DRAWINGS PREPARED FOR : NEVIS HISTORICAL AND CONSERVATION SOCIETY

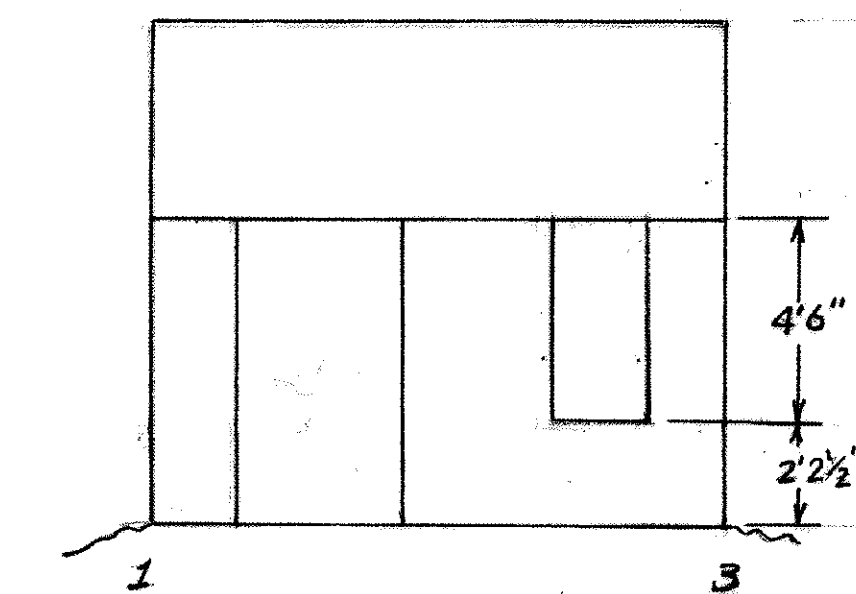
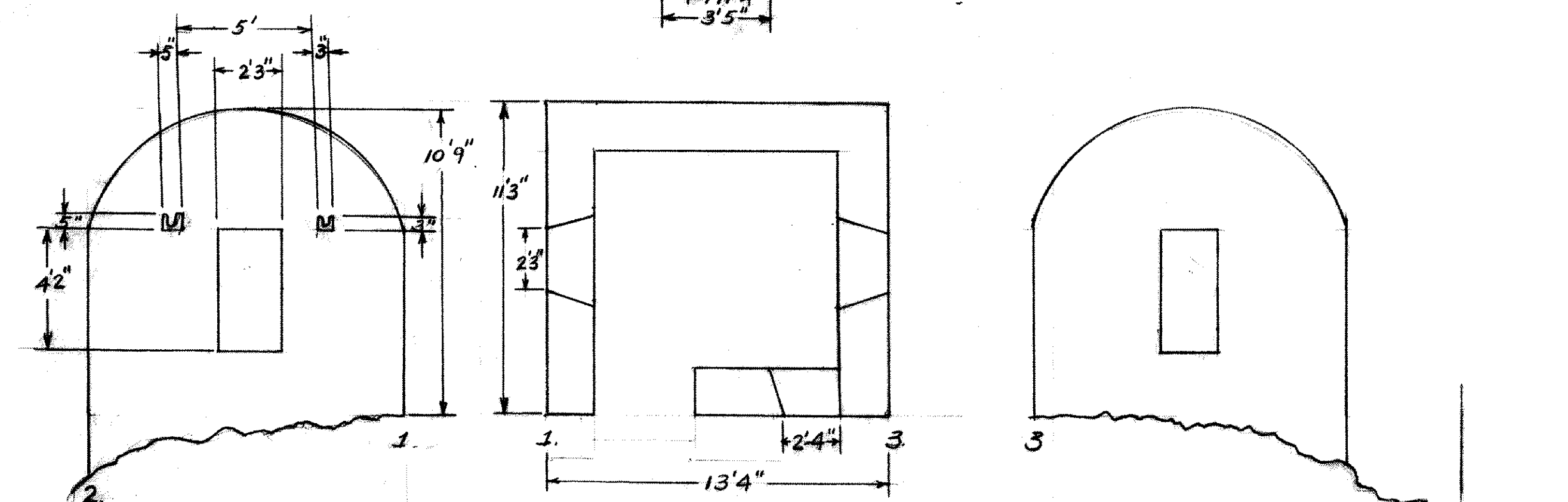
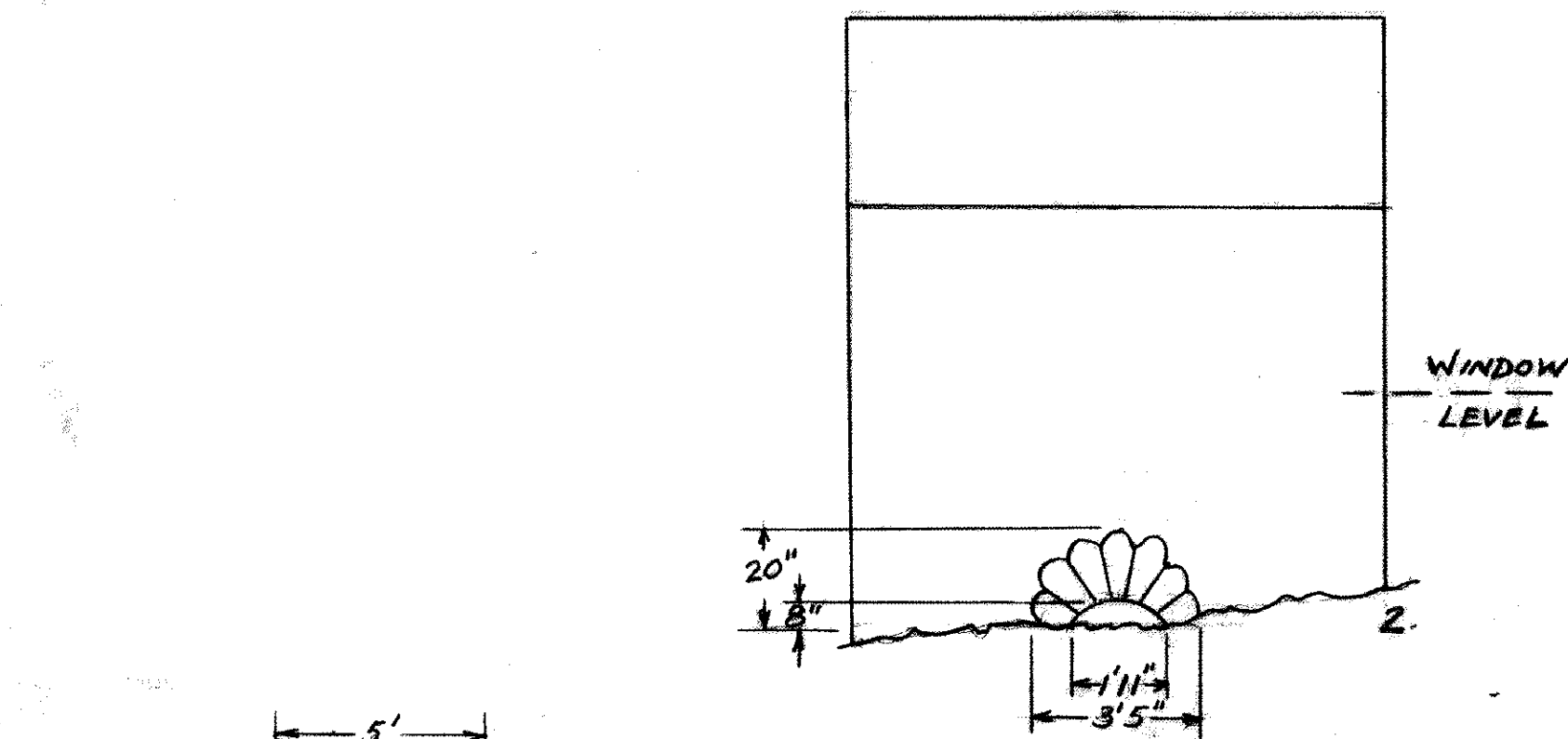
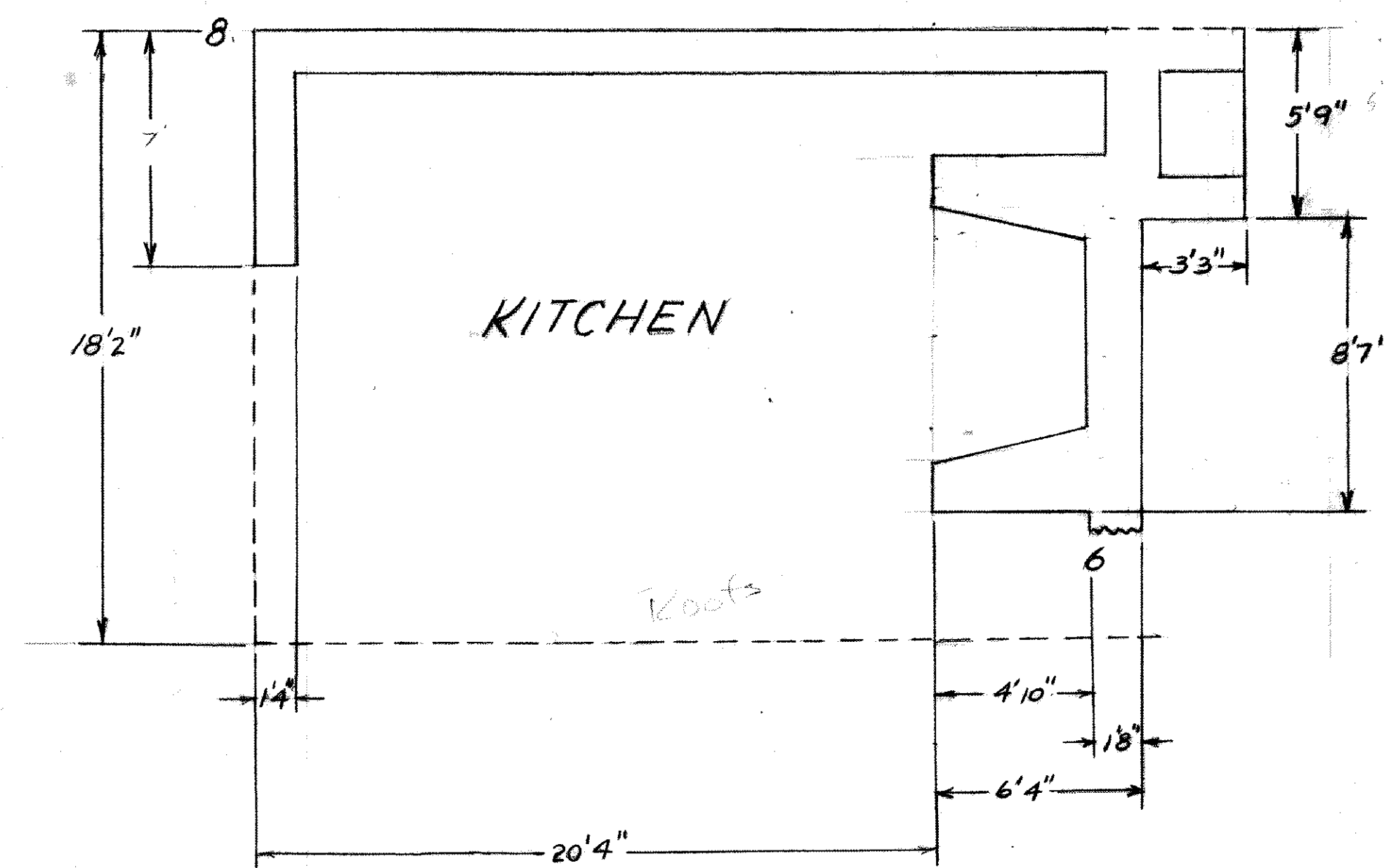
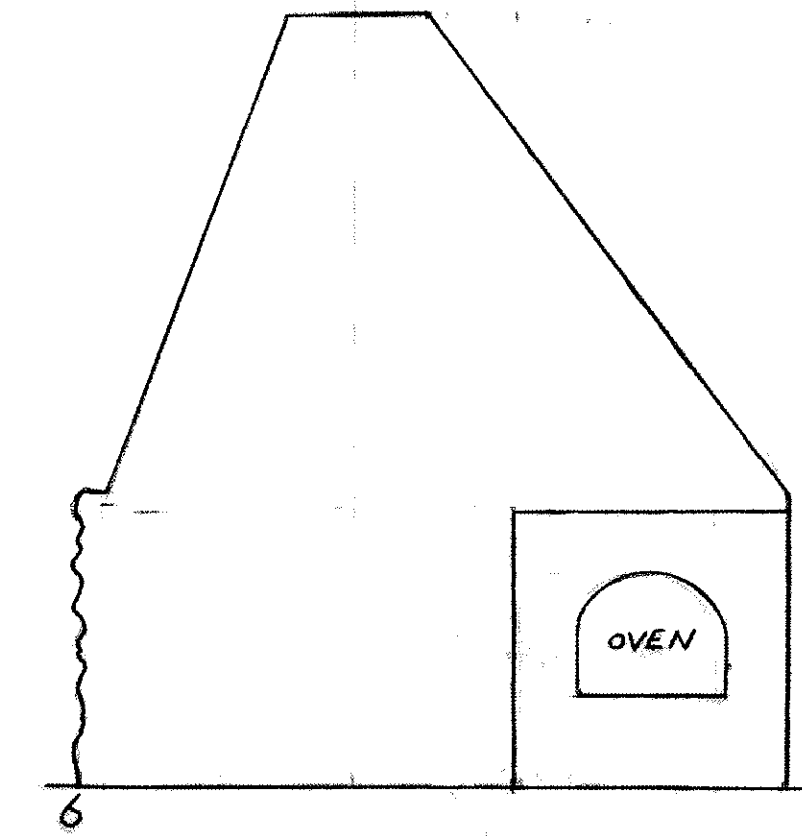
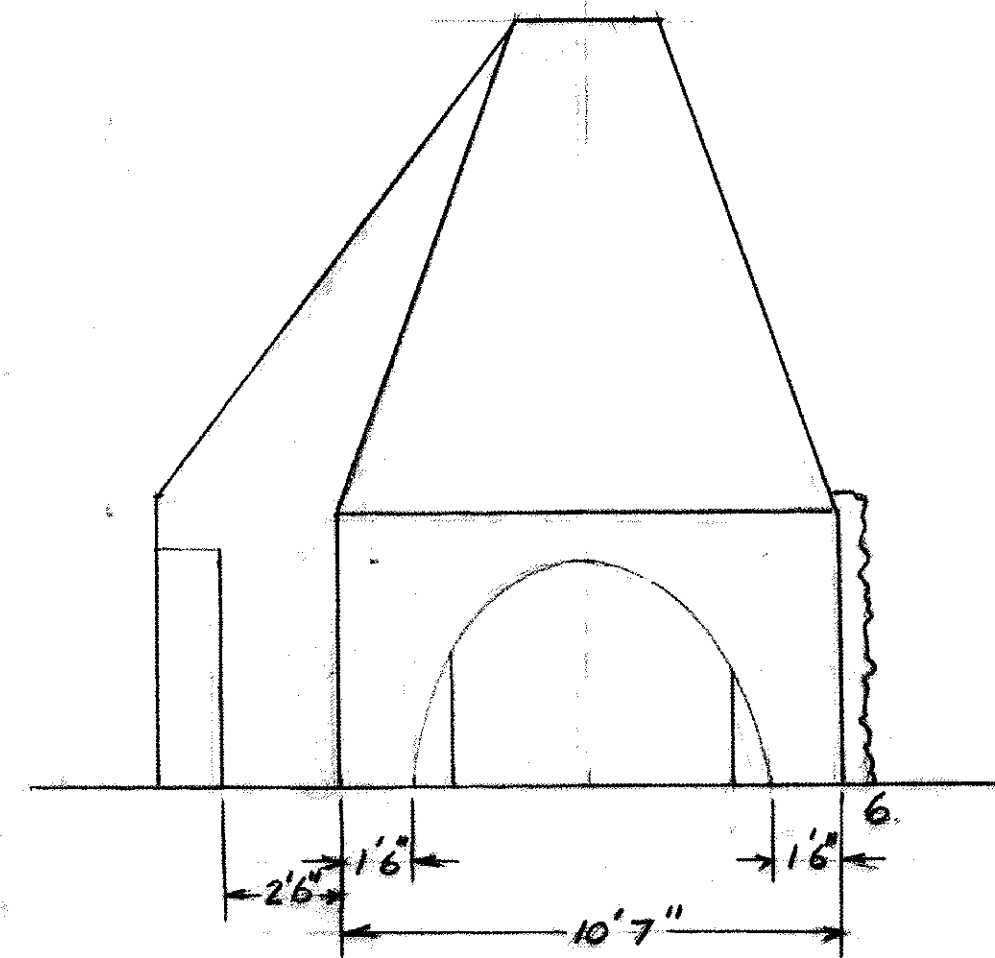
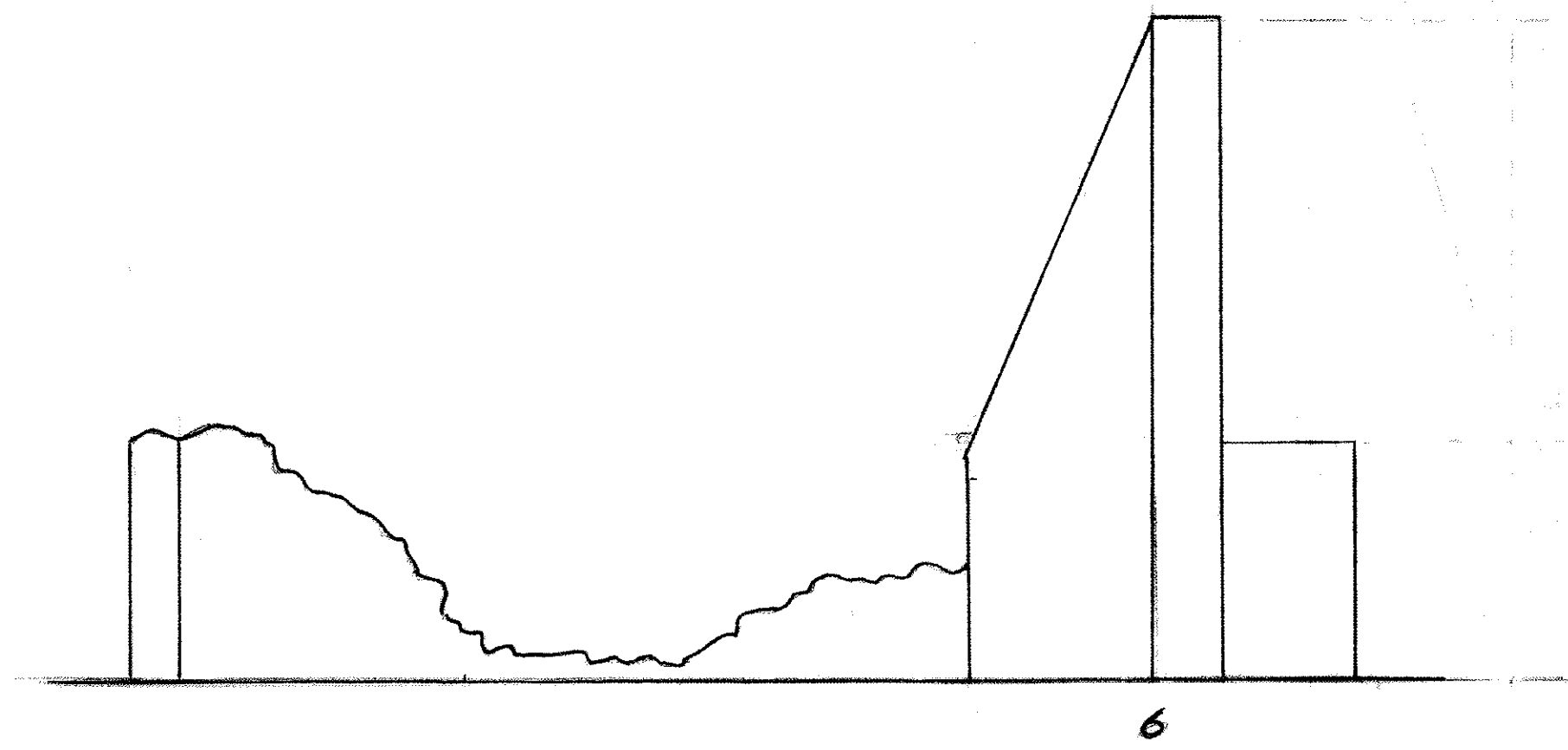
PREPARED BY : CARIBBEAN VOLUNTEER EXPEDITIONS, BOX 386 CORNING, N.Y. 14830 AND ELDERHOSTEL, INC.

PARTICIPANTS: CYS A. HERSH, S. GORDON, G.SCHLEINKOFER, M.GEIGER VOST, F.VOST, ELDERHOSTEL: B.BULBRAN, C.E.GULBRAN, M.KAUFMAN, H.KAUFMAN, M.MERLE, N.STAPLES, P.SULLIVAN.

DWG. NO. **4**  
4 of 6



<b>SOUTH ELEVATION - GREATHOUSE</b>	
<b>EDEN BROWN PLANTATION GREATHOUSE • NEVIS • NOV.'98</b>	
<small>MEASURED DRAWINGS PREPARED FOR: NEVIS HISTORICAL AND CONSERVATION SOCIETY</small>	
<small>PREPARED BY: CARIBBEAN VOLUNTEER EXPEDITIONS, BOX 388 CORNING, N.Y. 14830 AND ELDERHOSTEL, INC.</small>	<small>DWG. NO.</small>
<small>PARTICIPANTS: CVE: A. HERSH, S. GORDON, S. SCHLEINKOFER, M. BEISER VOST, F. VOST, ELDERHOSTEL: B. GULBRAN, C. E. GULBRAN, M. KAUFMAN, H. KAUFMAN, M. MERLE, N. STAPLES, P. SULLIVAN</small>	<b>5</b> <small>5 of 6</small>



PRIVY

PLANS & ELEVATIONS - KITCHEN and PRIVY	
EDEN BROWN PLANTATION GREATHOUSE • NEVIS • NOV. '98	
MEASURED DRAWINGS PREPARED FOR : NEVIS HISTORICAL AND CONSERVATION SOCIETY	
PREPARED BY : CARIBBEAN VOLUNTEER EXPEDITIONS, BOX 388 CORNING, N.Y. 14830 AND ELDERHOSTEL, INC.	DWG. NO.
PARTICIPANTS: CVE: A. HERSH, S. GORDON, G. SCHLEINKOFER, M. SEIGER, VOST, F. VOST, ELDERHOSTEL: B. GULBRAN, C. GULBRAN, M. KAUFMAN, H. KAUFMAN, M. MERLE, N. STAPLES, P. SULLIVAN	6 6 of 6