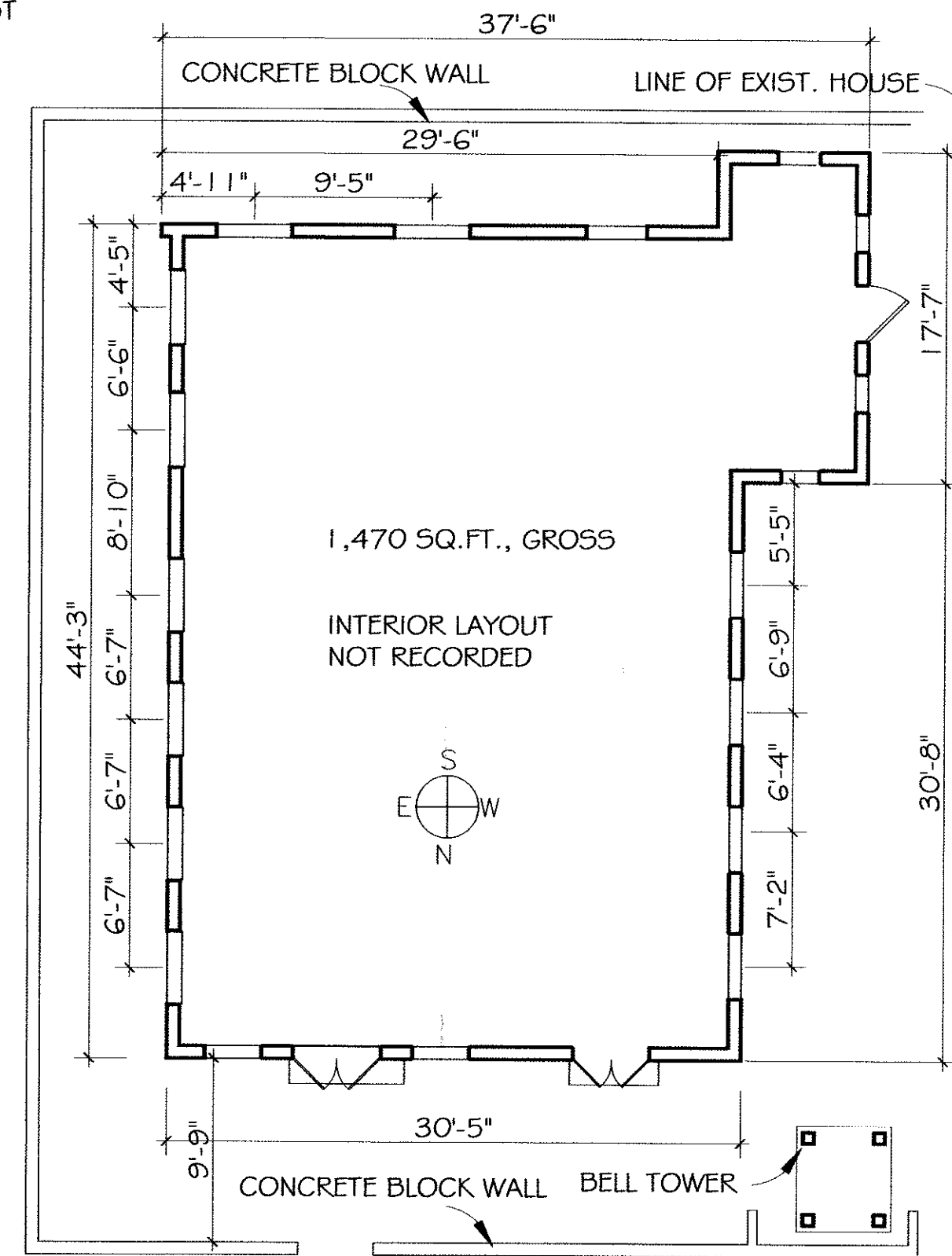
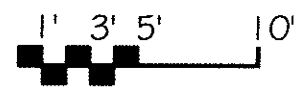


ELEVATIONS
1/8" = 1'-0"



FLOOR PLAN
1/8" = 1'-0"



THESE DRAWINGS ARE THE RESULT OF FIELD MEASUREMENTS TAKEN IN THE WEEK OF 27 FEB - 3 MAR, 2005 BY ELDERHOSTEL VOLUNTEERS. THEY ARE NEITHER COMPLETE NOR ENTIRELY ACCURATE, HENCE "PHASE 1". THEY ARE SUBJECT TO FURTHER FIELD VERIFICATION AND RECORDING OF DIMENSIONS, MATERIALS AND DETAIL.

**HISTORIC BUILDING INVENTORY
IN THE
BRITISH VIRGIN ISLANDS**

THE METHODIST CHURCHES OF TORTOLA
MEASURED DRAWINGS, PHASE 1
SPONSORED BY THE BVI HISTORIC TRUST
& LAVITY STOUTT COLLEGE OF BVI

PROVIDED BY ELDERHOSTEL VOLUNTEER GROUP
PROGRAM 11533-022705, FEB-MAR, 2005
CARIBBEAN VOLUNTEER EXPEDITIONS,
PROGRAM PROVIDER

**CANE GARDEN METHODIST CHURCH
SITE
PLAN
& EXTERIOR ELEVATIONS**

DATE: MARCH 15, 2006

1

SHEET: OF:

HISTORIC BUILDING INVENTORY

IN THE
BRITISH VIRGIN ISLANDS

THE METHODIST CHURCHES OF TORTOLA
MEASURED DRAWINGS, PHASE 1
SPONSORED BY THE BVI HISTORIC TRUST
& LAVITY STOUTT COLLEGE OF BVI

PROVIDED BY ELDERHOSTEL VOLUNTEER GROUP
PROGRAM 11533-022705, FEB-MAR, 2005

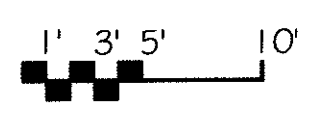
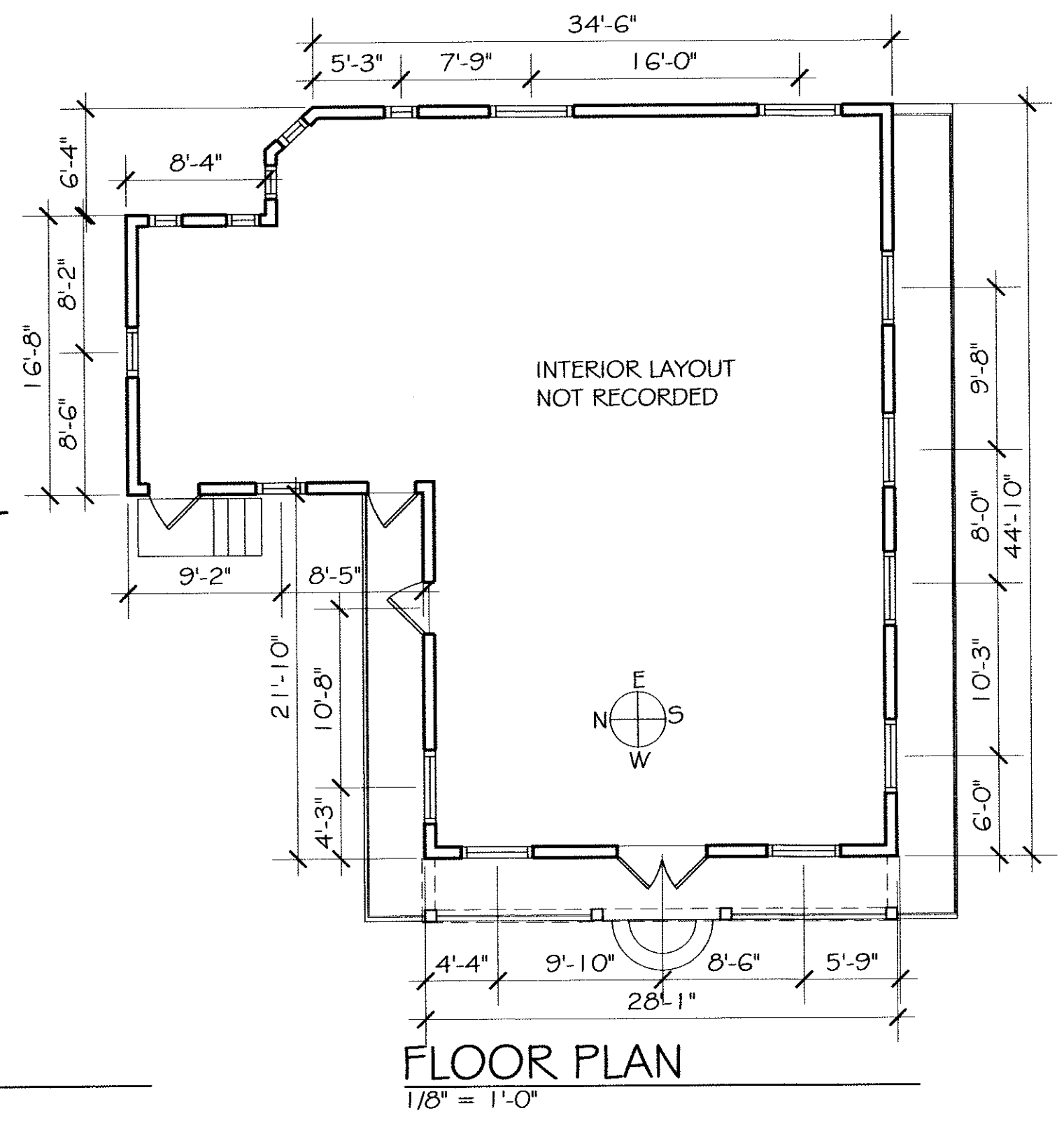
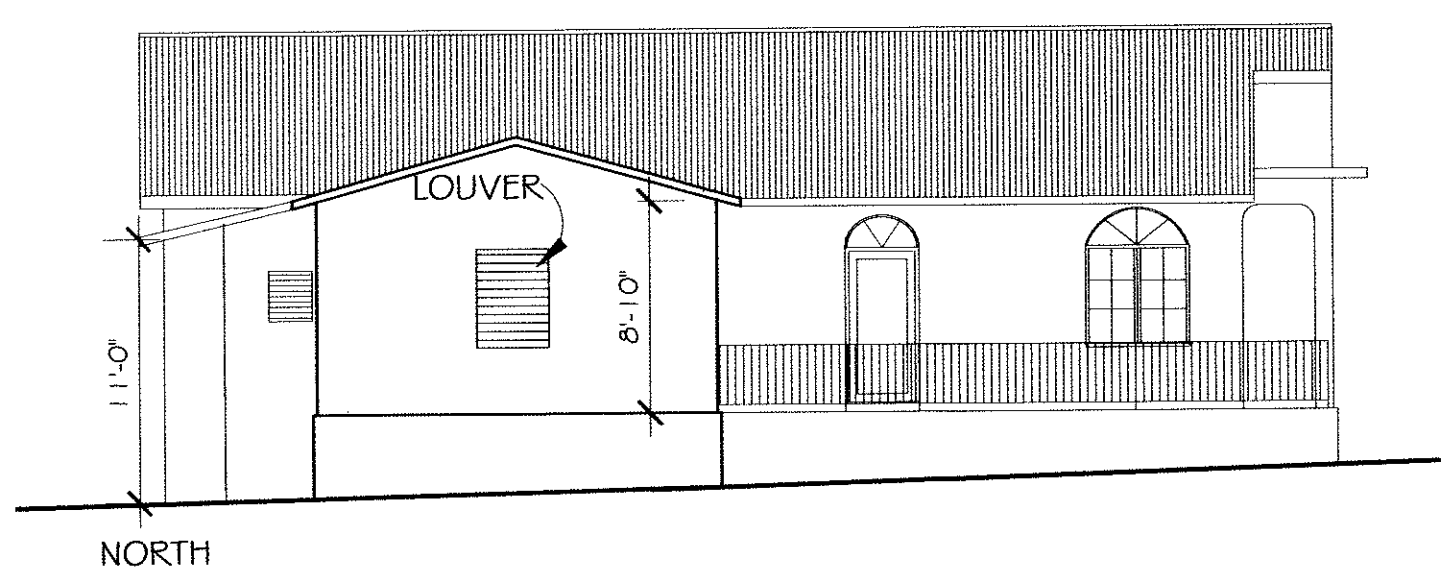
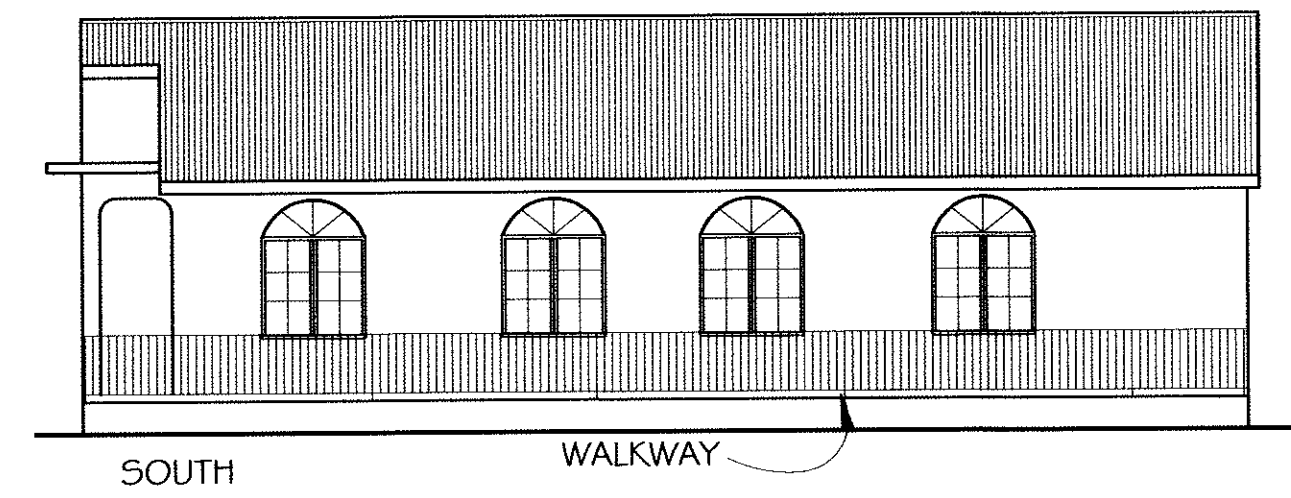
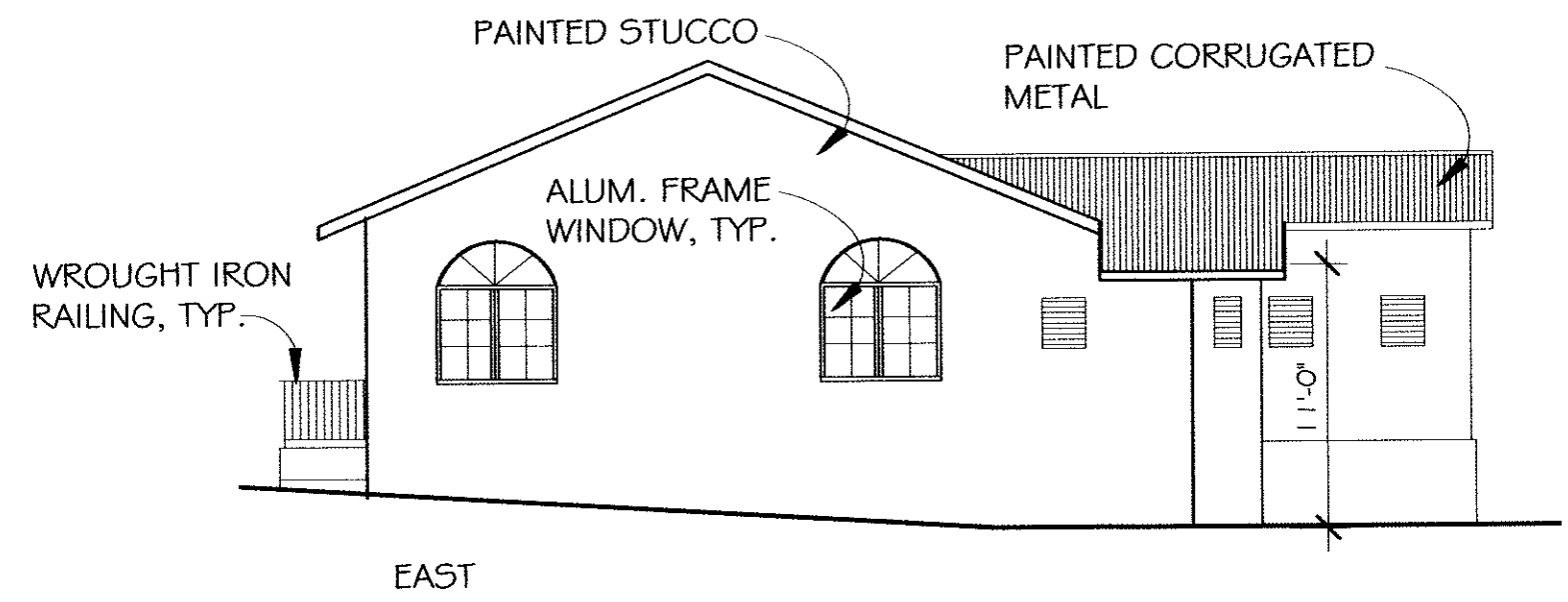
CARIBBEAN VOLUNTEER EXPEDITIONS,
PROGRAM PROVIDER

CARROT BAY METHODIST CHURCH
PLAN
& EXTERIOR ELEVATIONS

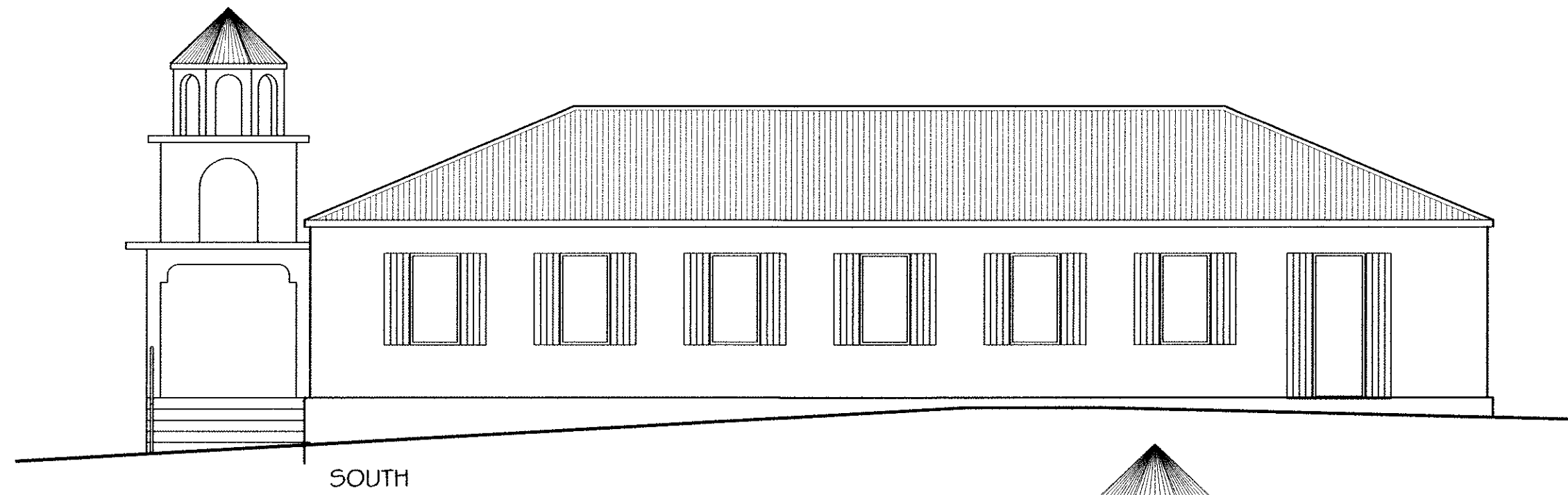
DATE: MARCH 15, 2006

1

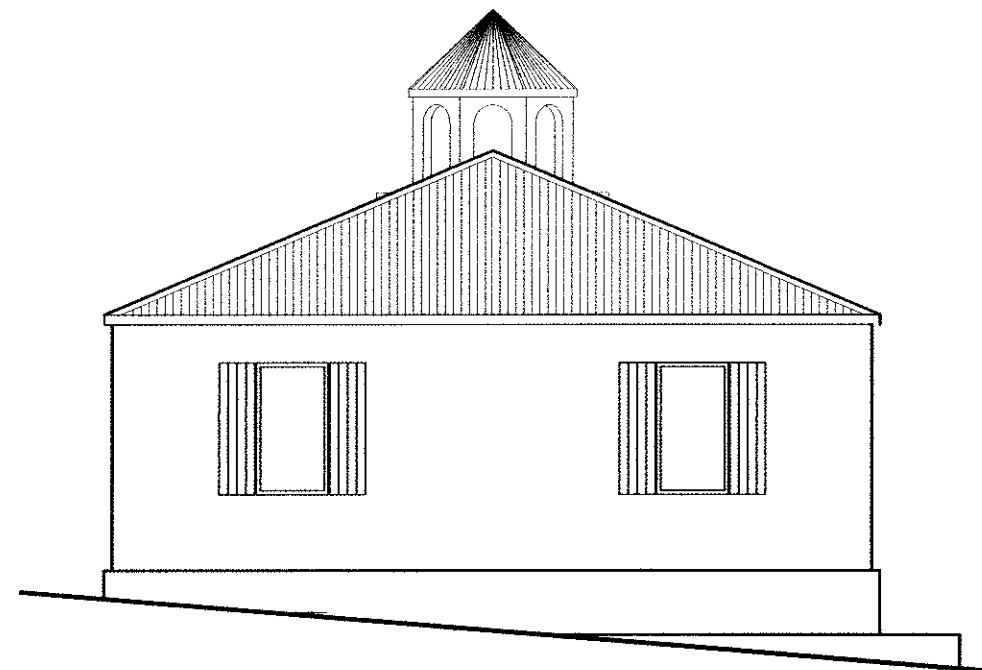
SHEET: OF:



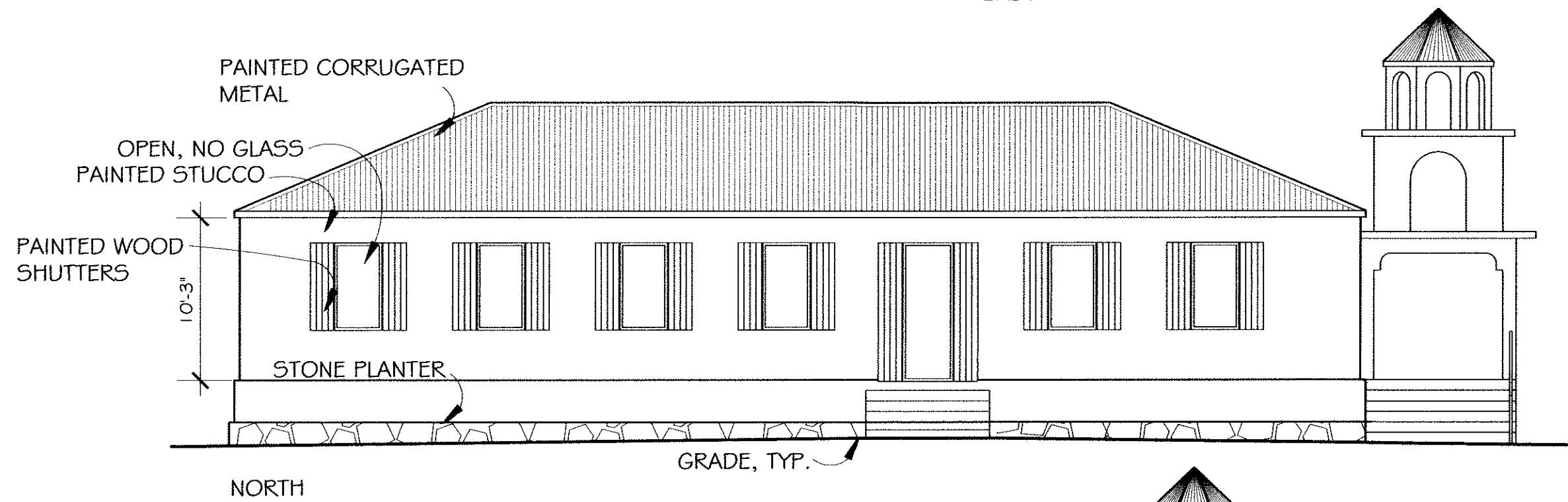
THESE DRAWINGS ARE THE RESULT OF FIELD MEASUREMENTS TAKEN IN THE WEEK OF 27 FEB - 3 MAR, 2005 BY ELDERHOSTEL VOLUNTEERS. THEY ARE NEITHER COMPLETE NOR ENTIRELY ACCURATE, HENCE "PHASE 1". THEY ARE SUBJECT TO FURTHER FIELD VERIFICATION AND RECORDING OF DIMENSIONS, MATERIALS AND DETAIL.



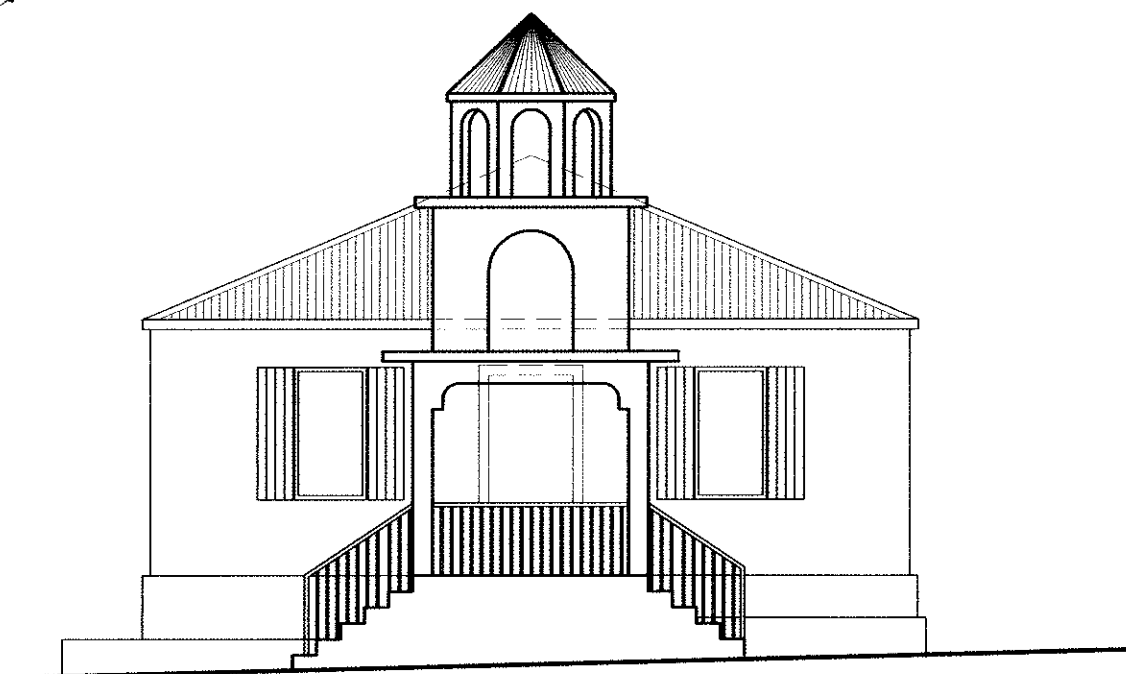
SOUTH



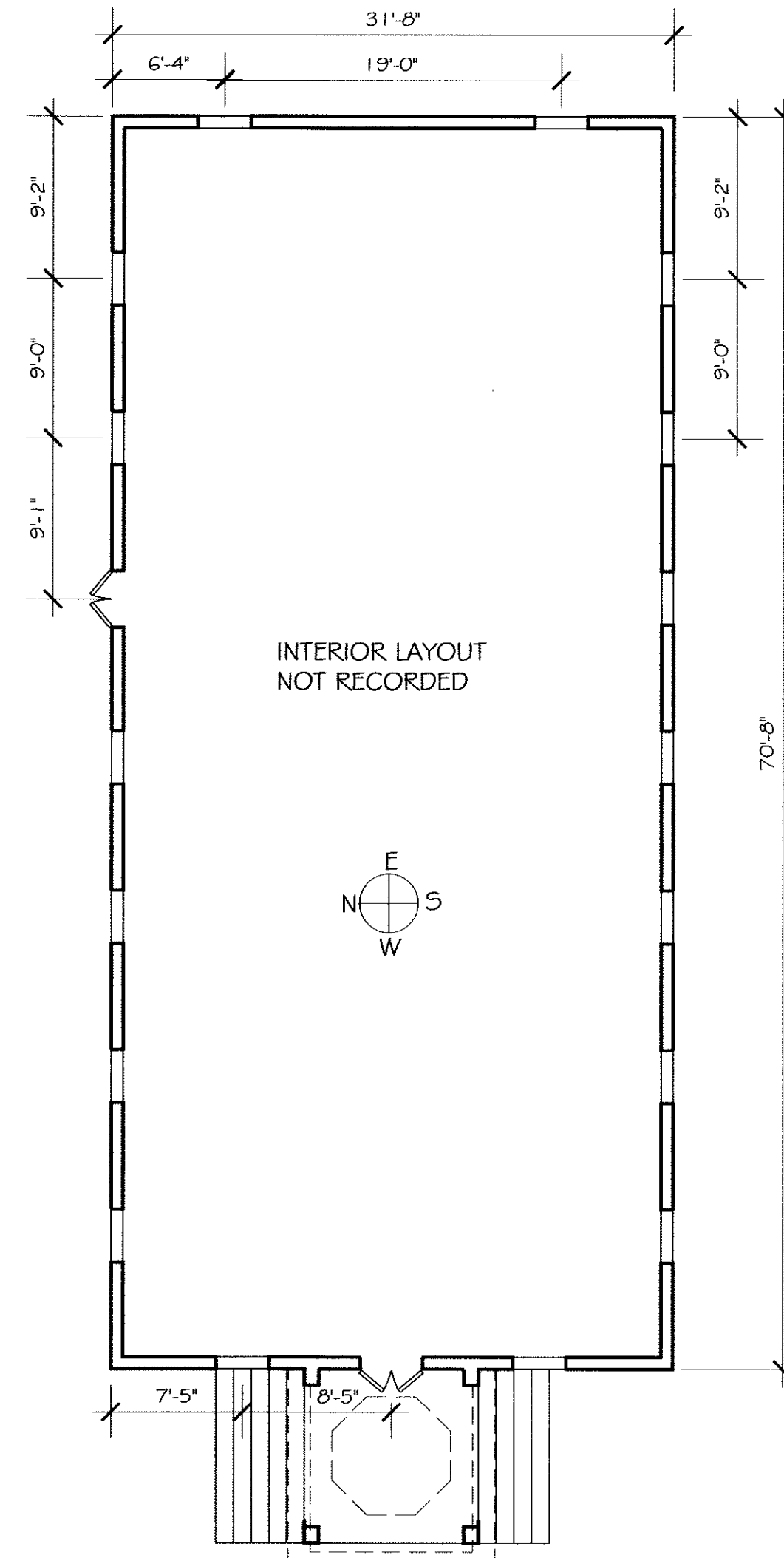
EAST



NORTH

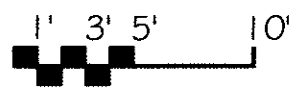


WEST



FLOOR PLAN
1/8" = 1'-0"

ELEVATIONS--CHURCH
1/8" = 1'-0"



THESE DRAWINGS ARE THE RESULT OF FIELD MEASUREMENTS TAKEN IN THE WEEK OF 27 FEB - 3 MAR, 2005 BY ELDERHOSTEL VOLUNTEERS. THEY ARE NEITHER COMPLETE NOR ENTIRELY ACCURATE, HENCE "PHASE 1". THEY ARE SUBJECT TO FURTHER FIELD VERIFICATION AND RECORDING OF DIMENSIONS, MATERIALS AND DETAIL.

HISTORIC BUILDING INVENTORY
IN THE
BRITISH VIRGIN ISLANDS

THE METHODIST CHURCHES OF TORTOLA
MEASURED DRAWINGS, PHASE 1
SPONSORED BY THE BV HISTORIC TRUST
& LAVITY STOUT COLLEGE OF BV

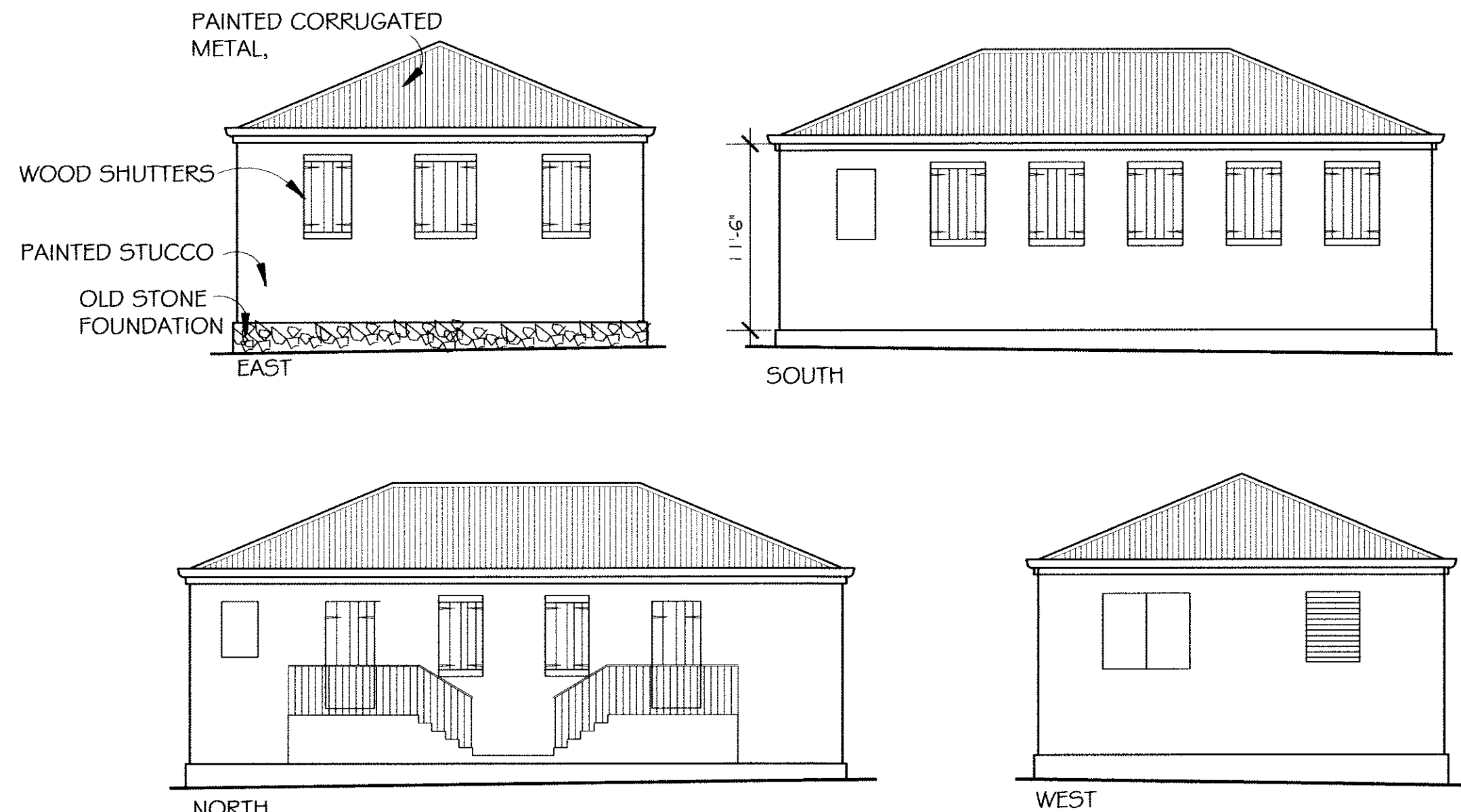
PROVIDED BY ELDERHOSTEL VOLUNTEER GROUP
PROGRAM 11533-022705, FEB-MAR, 2005
CARIBBEAN VOLUNTEER EXPEDITIONS,
PROGRAM PROVIDER

EAST END METHODIST CHURCH
PLAN
& EXTERIOR ELEVATIONS

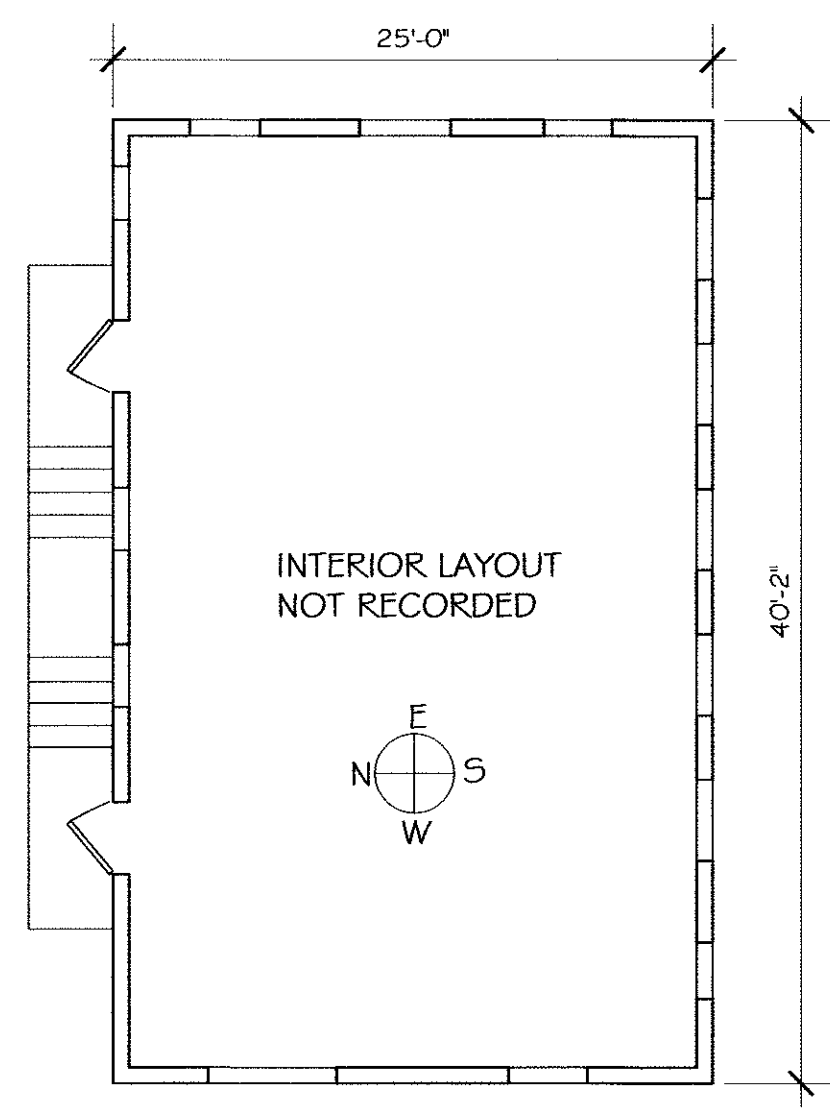
MARCH 15, 2006

1

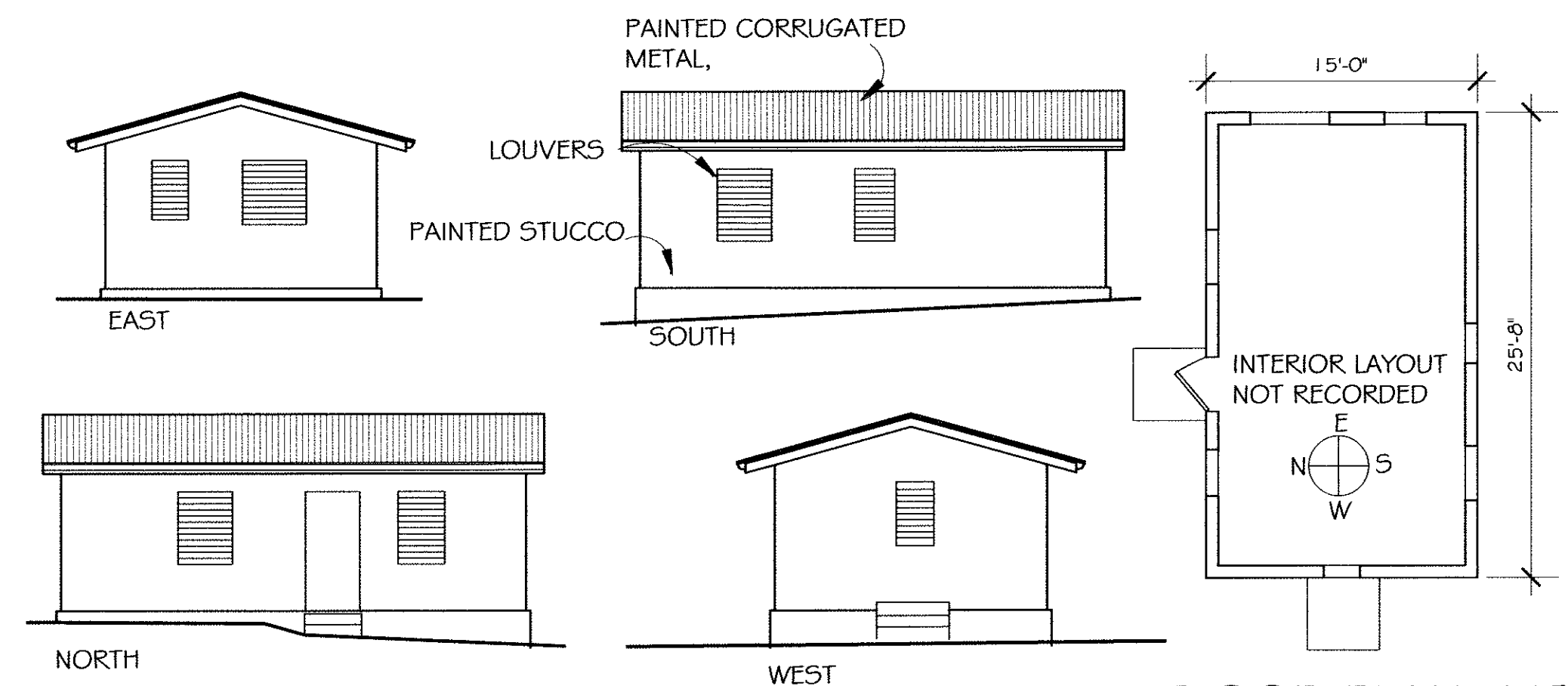
SHEET: 1 OF: 2



NORTH
ELEVATIONS--COMMUNITY BLDG.
 1/8" = 1'-0"

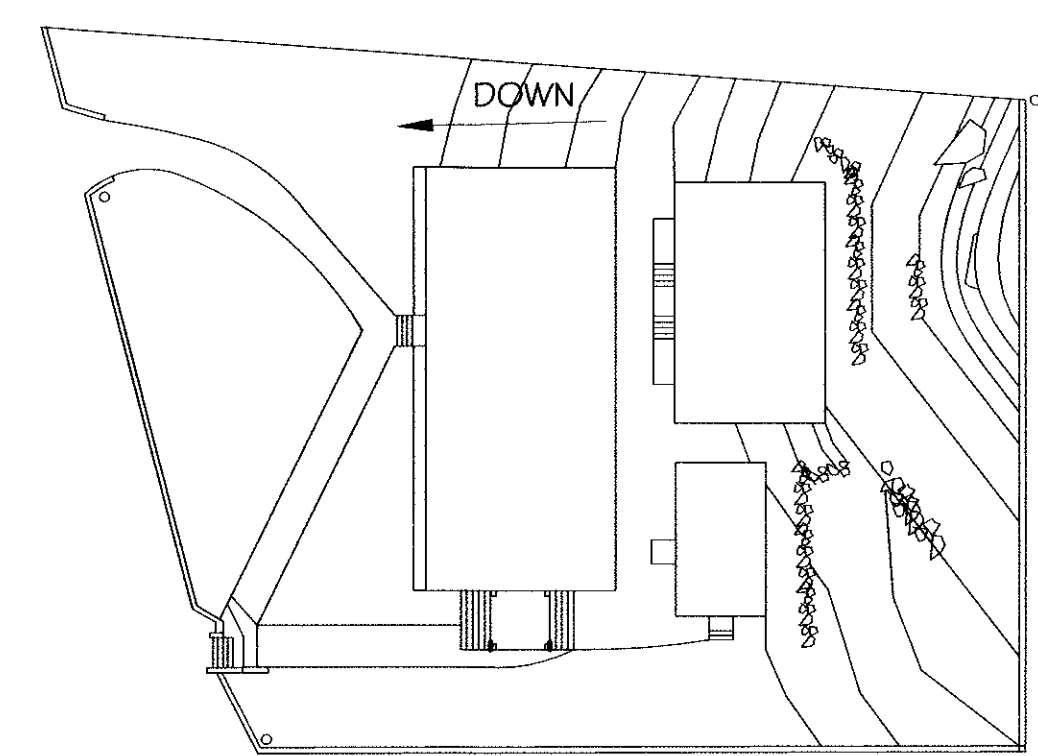


FLOOR PLAN--COMMUNITY BLDG.
 1/8" = 1'-0"

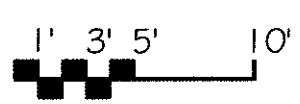


NORTH
ELEVATIONS--VESTRY
 1/8" = 1'-0"

FLOOR PLAN--VESTRY
 1/8" = 1'-0"



SITE PLAN
 NO SCALE

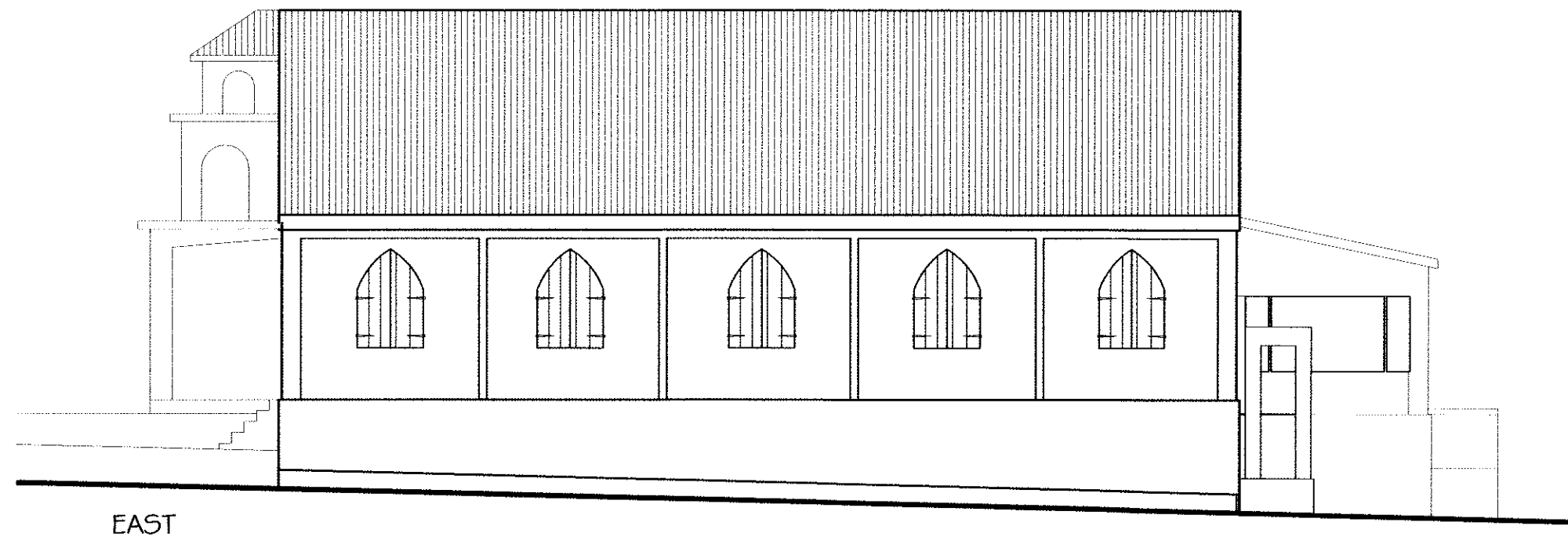
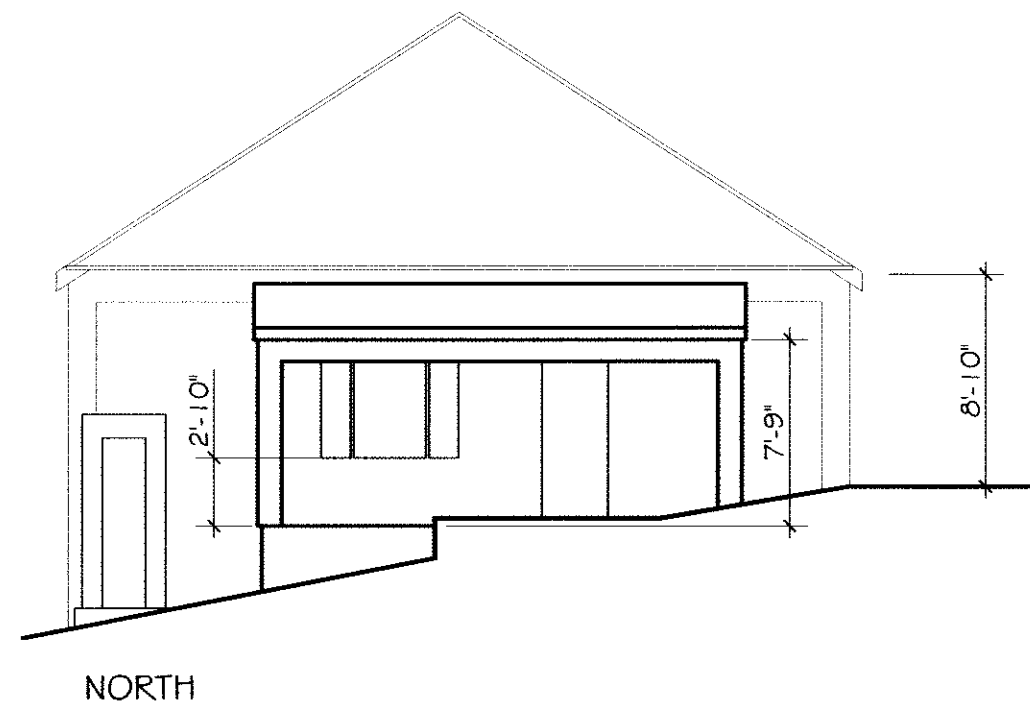


THESE DRAWINGS ARE THE RESULT OF FIELD MEASUREMENTS TAKEN IN THE WEEK OF 27 FEB - 3 MAR, 2005 BY ELDERHOSTEL VOLUNTEERS. THEY ARE NEITHER COMPLETE NOR ENTIRELY ACCURATE, HENCE "PHASE 1". THEY ARE SUBJECT TO FURTHER FIELD VERIFICATION AND RECORDING OF DIMENSIONS, MATERIALS AND DETAIL.

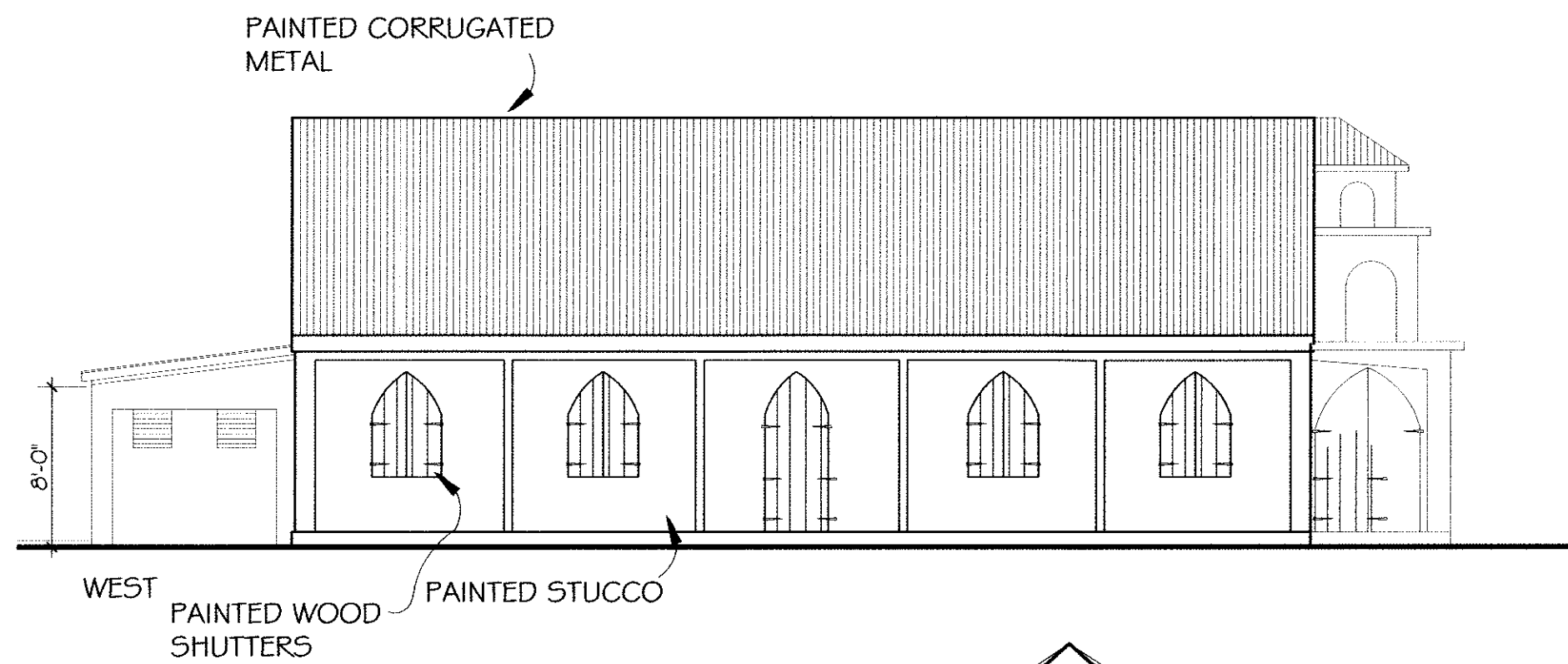
HISTORIC BUILDING INVENTORY
 IN THE
BRITISH VIRGIN ISLANDS
 PROVIDED BY ELDERHOSTEL VOLUNTEER GROUP
 PROGRAM 11533-022705, FEB-MAR, 2005
 THE METHODIST CHURCHES OF TORTOLA
 MEASURED DRAWINGS, PHASE 1
 SPONSORED BY THE BVI HISTORIC TRUST
 & LAVITY STOUTT COLLEGE OF BVI
 CARIBBEAN VOLUNTEER EXPEDITIONS,
 PROGRAM PROVIDER

EAST END METHODIST CHURCH
 SITE
OUTBUILDING PLANS
& EXTERIOR ELEVATIONS

DATE: MARCH 15, 2006
2
 SHEET: 2 OF 2



EAST



WEST

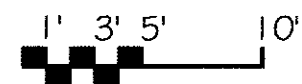


SOUTH

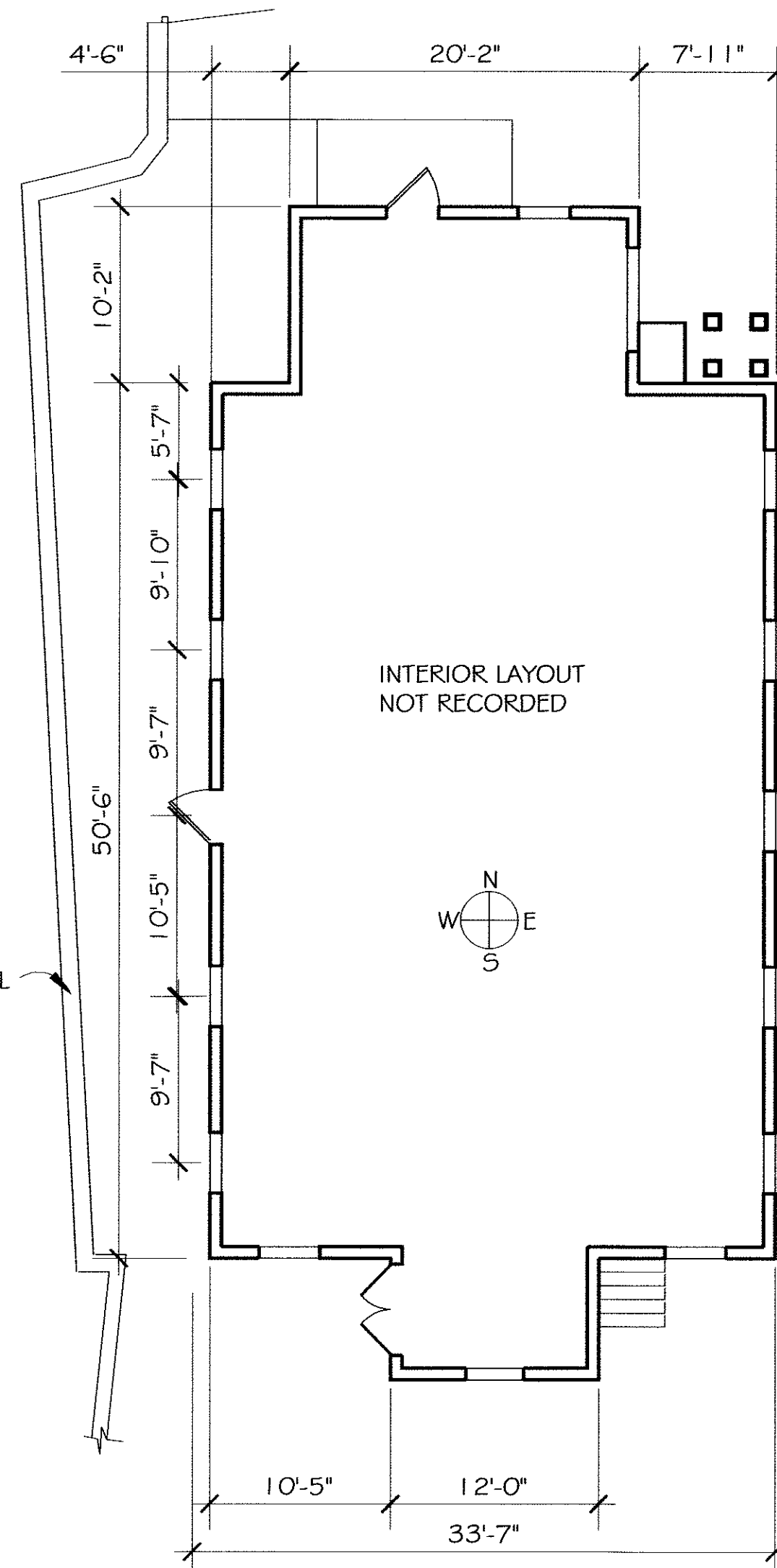
RETAINING WALL

ELEVATIONS

1/8" = 1'-0"



THESE DRAWINGS ARE THE RESULT OF FIELD MEASUREMENTS TAKEN IN THE WEEK OF 27 FEB - 3 MAR, 2005 BY ELDERHOSTEL VOLUNTEERS. THEY ARE NEITHER COMPLETE NOR ENTIRELY ACCURATE, HENCE "PHASE 1". THEY ARE SUBJECT TO FURTHER FIELD VERIFICATION AND RECORDING OF DIMENSIONS, MATERIALS AND DETAIL.



FLOOR PLAN

1/8" = 1'-0"

**HISTORIC BUILDING INVENTORY
IN THE
BRITISH VIRGIN ISLANDS**

THE METHODIST CHURCHES OF TORTOLA
MEASURED DRAWINGS, PHASE 1
SPONSORED BY THE BVH HISTORIC TRUST
& LAVITY STOUTT COLLEGE OF BVH

PROVIDED BY ELDERHOSTEL VOLUNTEER GROUP
PROGRAM 11533-022705, FEB-MAR, 2005

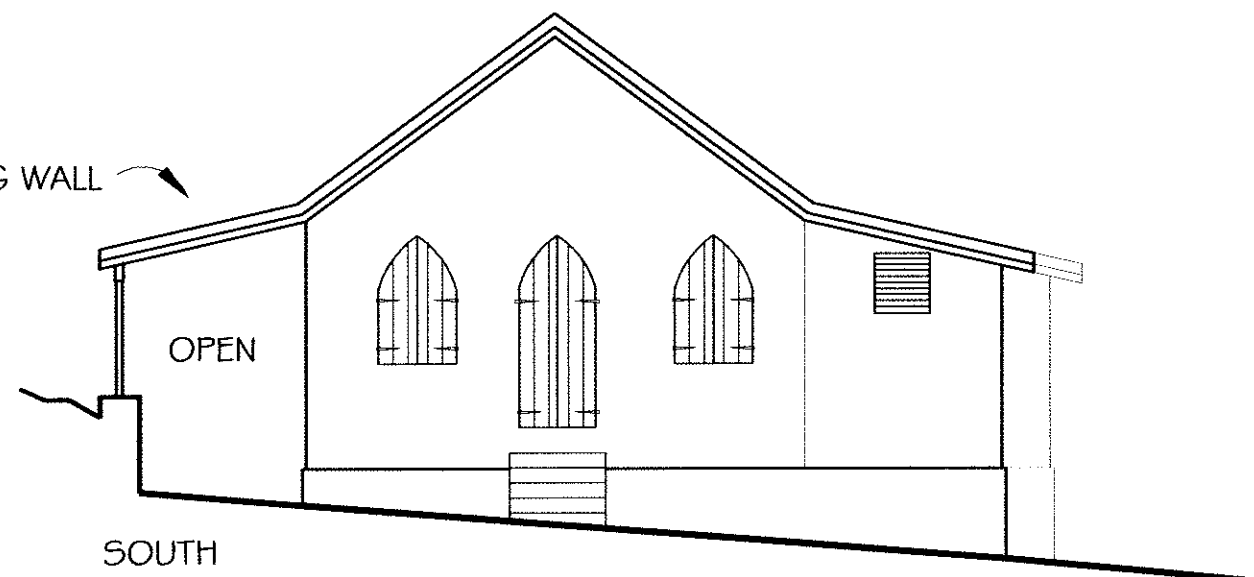
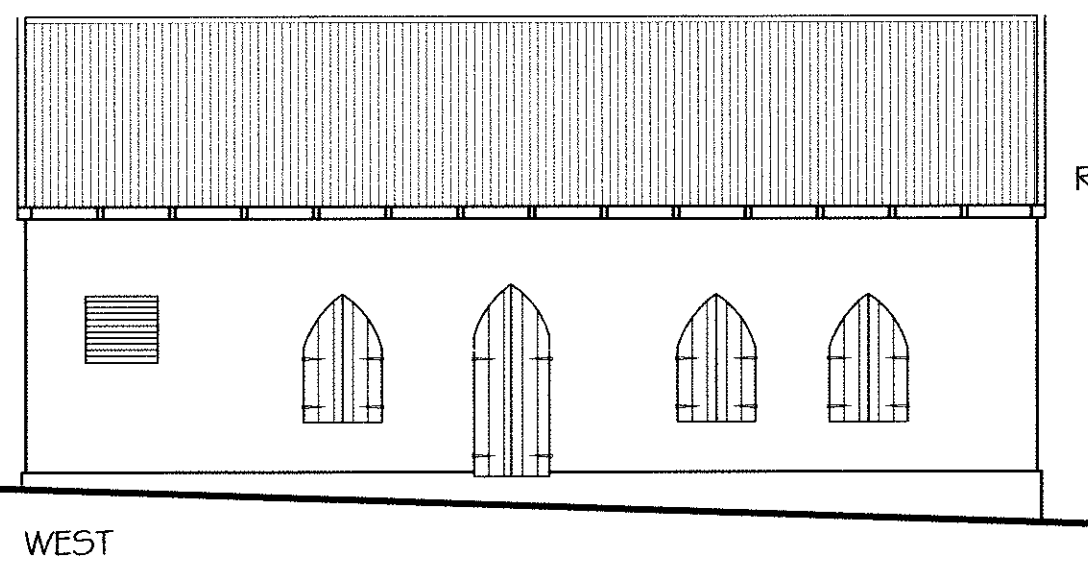
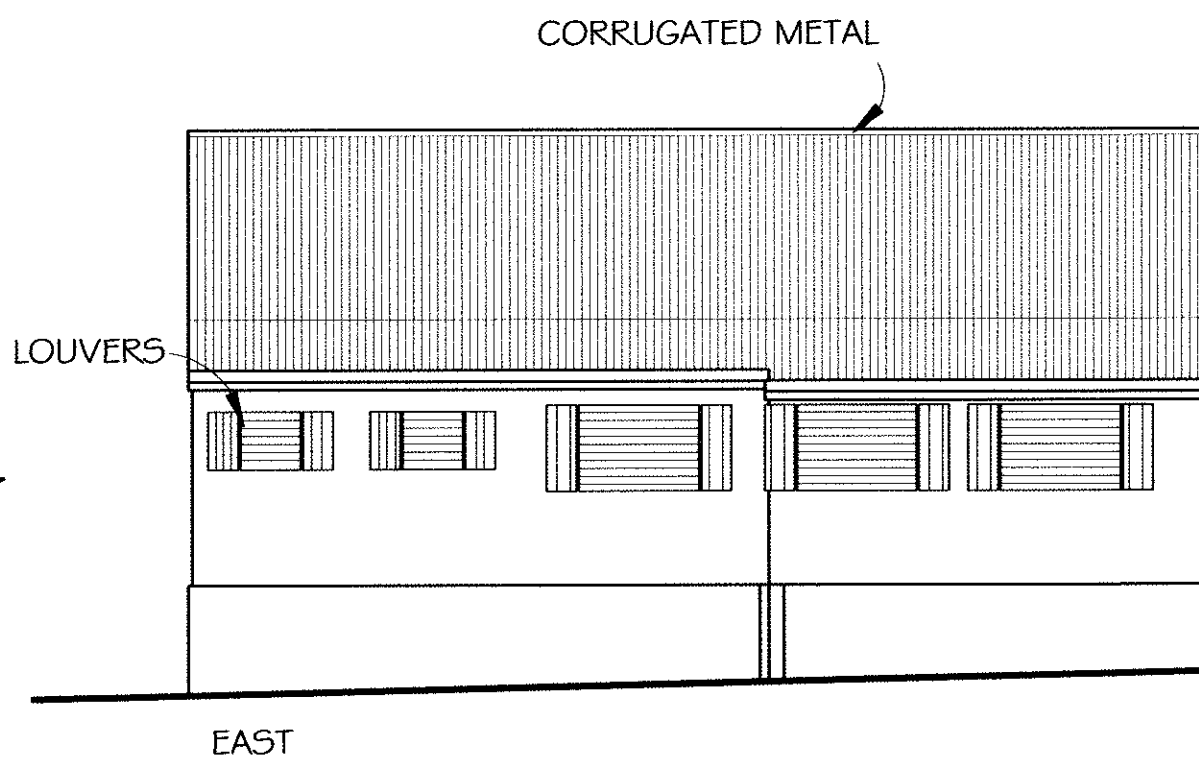
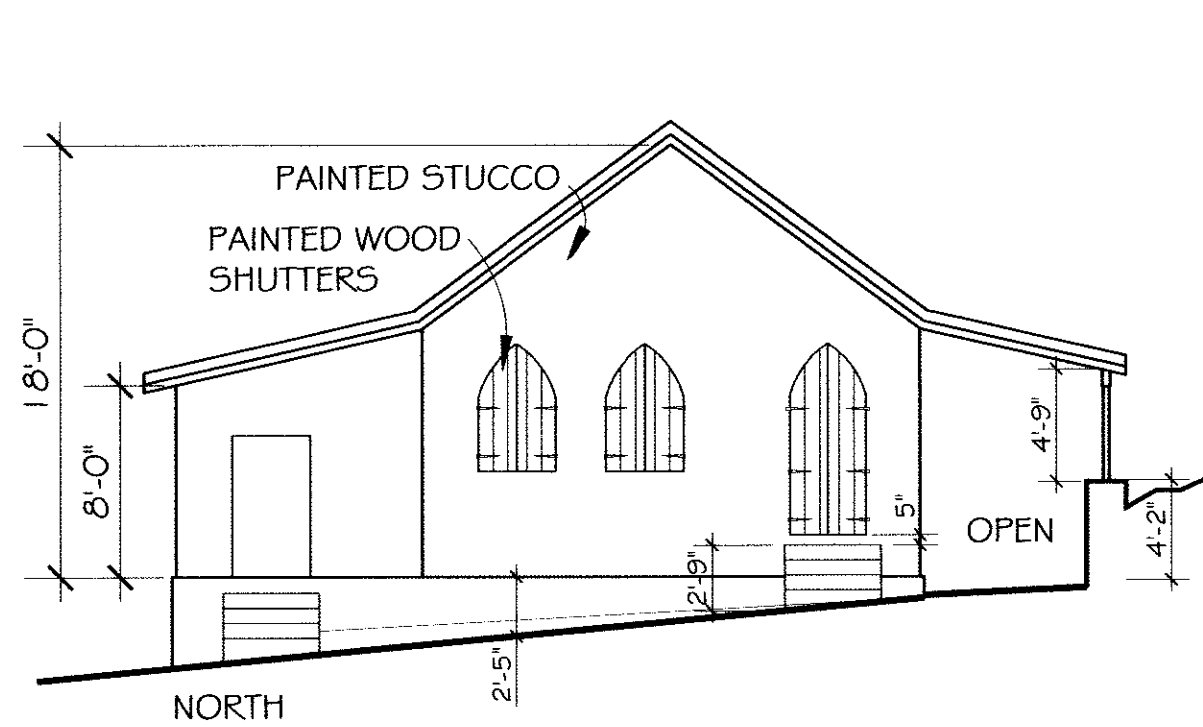
CARIBBEAN VOLUNTEER EXPEDITIONS,
PROGRAM PROVIDER

**LONG LOOK METHODIST CHURCH
PLAN
& EXTERIOR ELEVATIONS**

DATE: MARCH 15, 2006

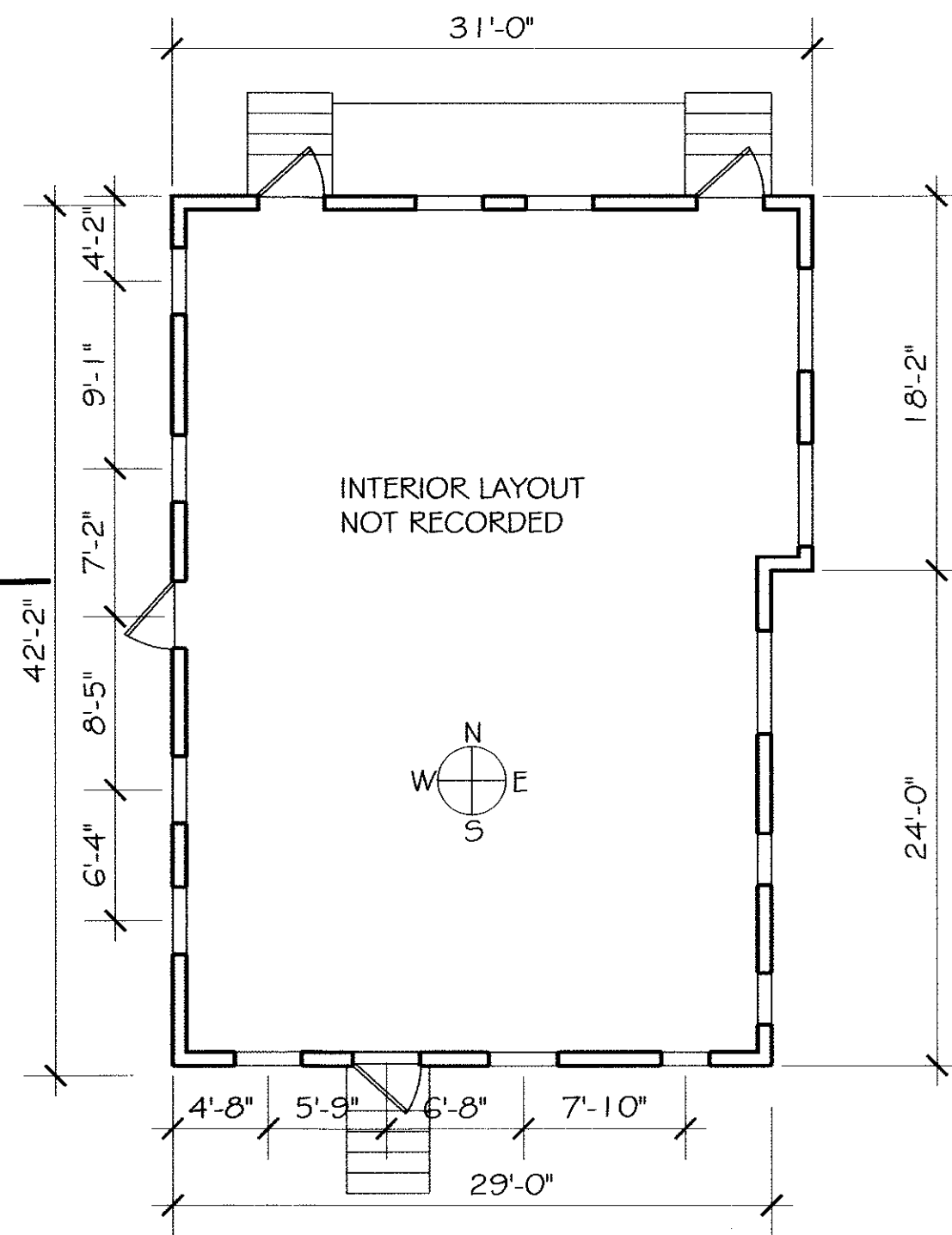
1

SHEET: 1 OF 2



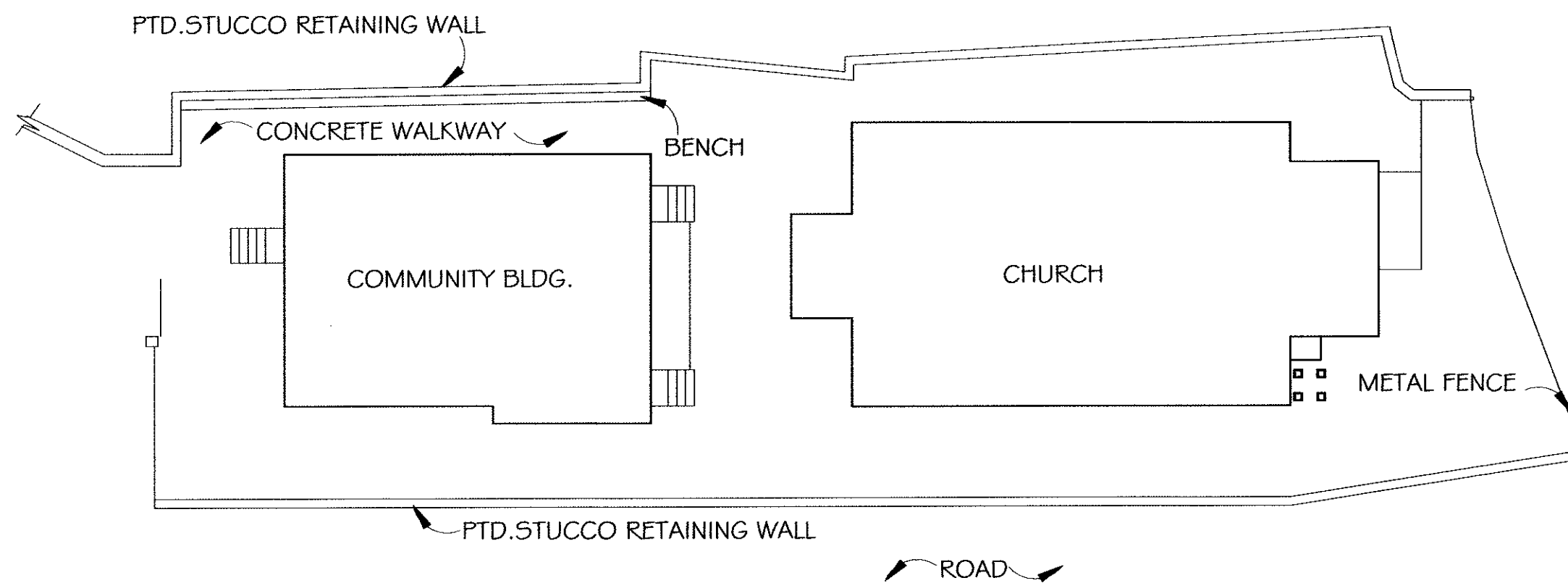
ELEVATIONS--PARISH HOUSE

1/8" = 1'-0"

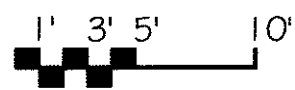


FLOOR PLAN--PARISH HOUSE

1/8" = 1'-0"



SITE PLAN
NOT TO SCALE



THESE DRAWINGS ARE THE RESULT OF FIELD MEASUREMENTS TAKEN IN THE WEEK OF 27 FEB - 3 MAR, 2005 BY ELDERHOSTEL VOLUNTEERS. THEY ARE NEITHER COMPLETE NOR ENTIRELY ACCURATE, HENCE "PHASE 1". THEY ARE SUBJECT TO FURTHER FIELD VERIFICATION AND RECORDING OF DIMENSIONS, MATERIALS AND DETAIL.

HISTORIC BUILDING INVENTORY
IN THE

BRITISH VIRGIN ISLANDS

THE METHODIST CHURCHES OF TORTOLA
MEASURED DRAWINGS, PHASE 1
PROVIDED BY ELDERHOSTEL VOLUNTEER GROUP
PROGRAM 11533-022705, FEB-MAR, 2005
SPONSORED BY THE BV HISTORIC TRUST
& LAMITY STOUTT COLLEGE OF BV
CARIBBEAN VOLUNTEER EXPEDITIONS,
PROGRAM PROVIDER

LONG LOOK METHODIST CHURCH
SITE

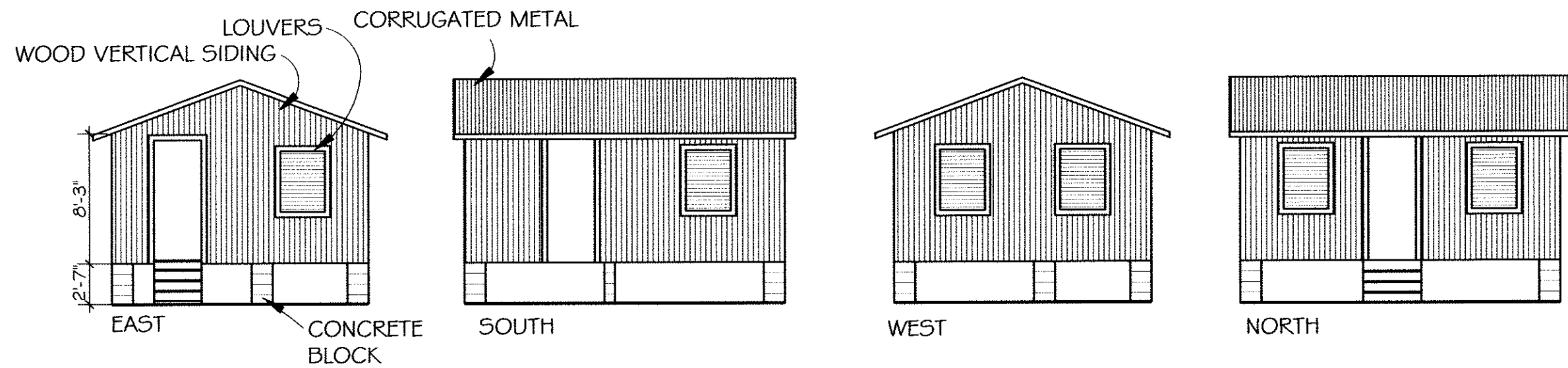
PARISH HOUSE
PLAN

& EXTERIOR ELEVATIONS

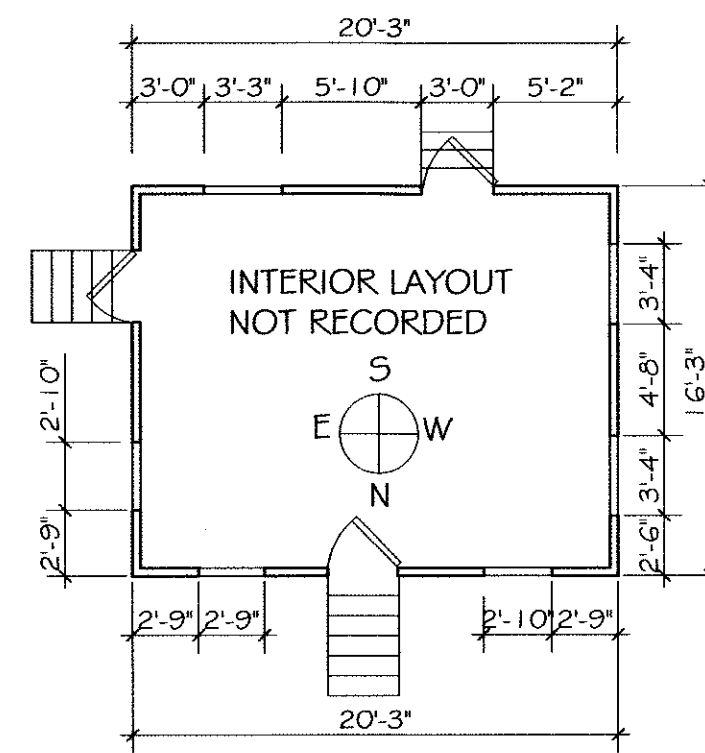
DATE: MARCH 15, 2006

2

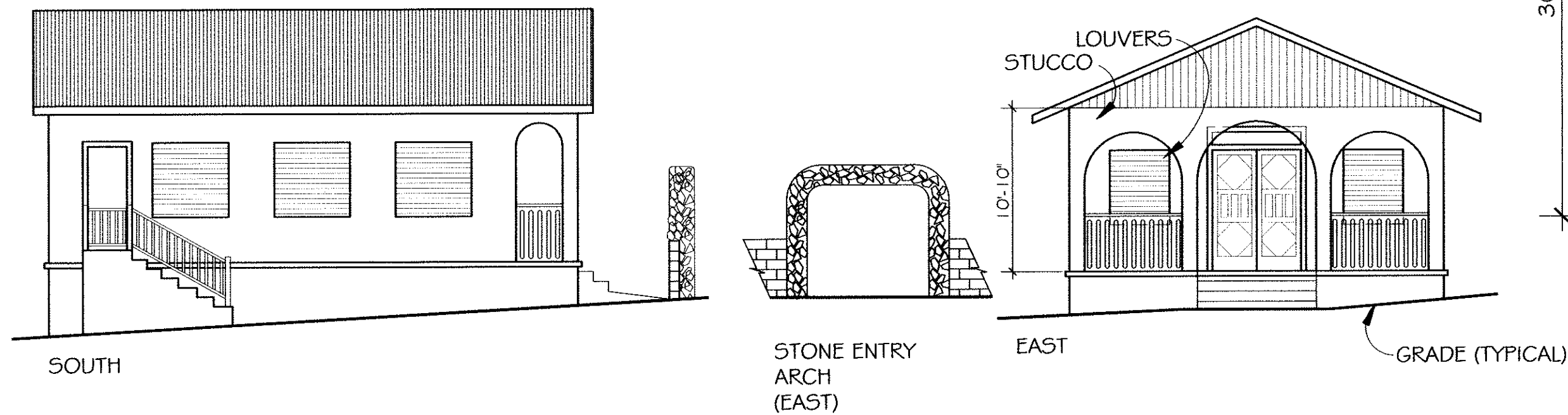
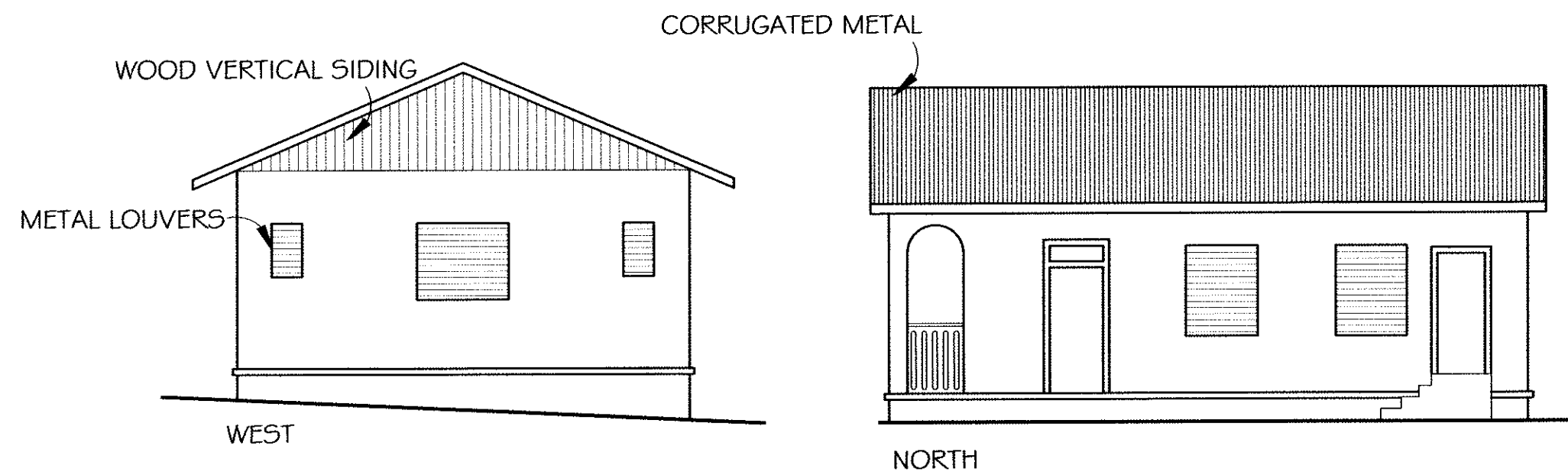
SHEET: 2 OF 2



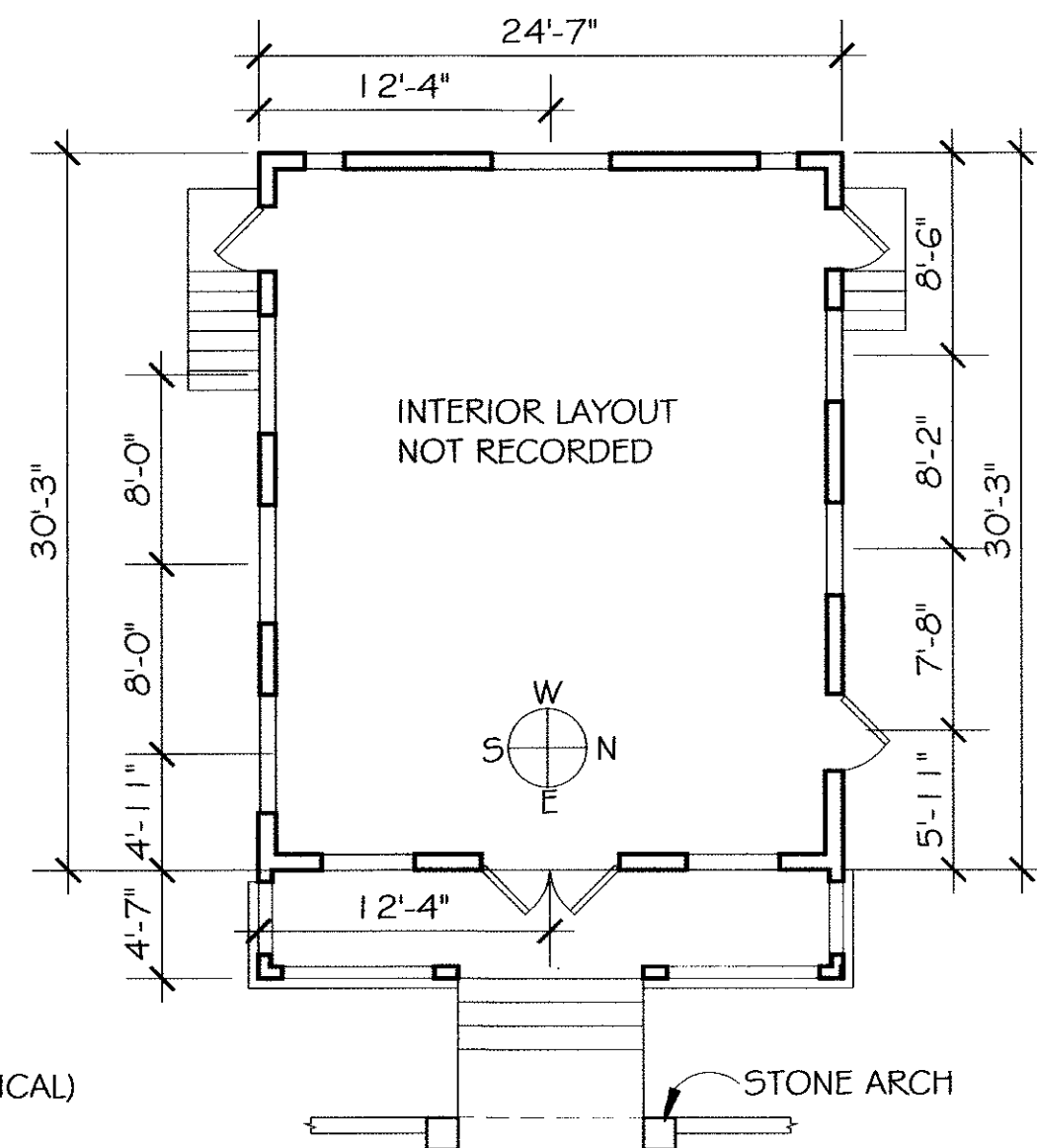
ELEVATIONS--OUTBUILDING
1/8" = 1'-0"



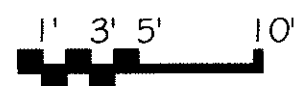
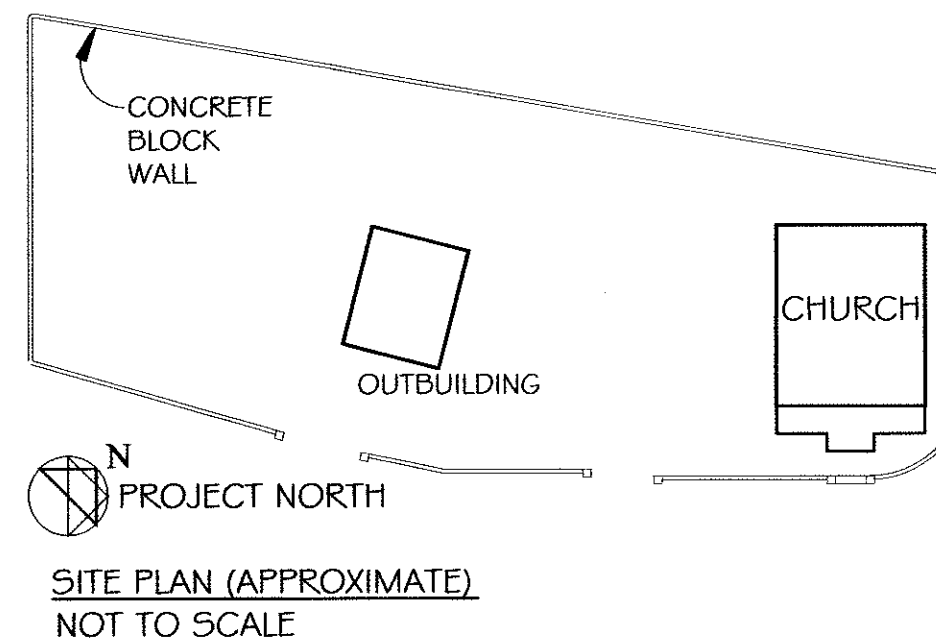
FLOOR PLAN--OUTBUILDING
1/8" = 1'-0"



ELEVATIONS--CHURCH
1/8" = 1'-0"



FLOOR PLAN--CHURCH
1/8" = 1'-0"



THESE DRAWINGS ARE THE RESULT OF FIELD MEASUREMENTS TAKEN IN THE WEEK OF 27 FEB - 3 MAR, 2005 BY ELDERHOSTEL VOLUNTEERS. THEY ARE NEITHER COMPLETE NOR ENTIRELY ACCURATE, HENCE "PHASE 1". THEY ARE SUBJECT TO FURTHER FIELD VERIFICATION AND RECORDING OF DIMENSIONS, MATERIALS AND DETAIL.

HISTORIC BUILDING INVENTORY

**IN THE
BRITISH VIRGIN ISLANDS**

THE METHODIST CHURCHES OF TORTOLA
MEASURED DRAWINGS: PHASE 1
SPONSORED BY THE BVI HISTORIC TRUST
& LAVITY STOUTT COLLEGE OF BVI

PROVIDED BY ELDERHOSTEL VOLUNTEER GROUP
PROGRAM 11533-022705, FEB-MAR, 2005
CARIBBEAN VOLUNTEER EXPEDITIONS,
PROGRAM PROVIDER

PURCELL METHODIST CHURCH

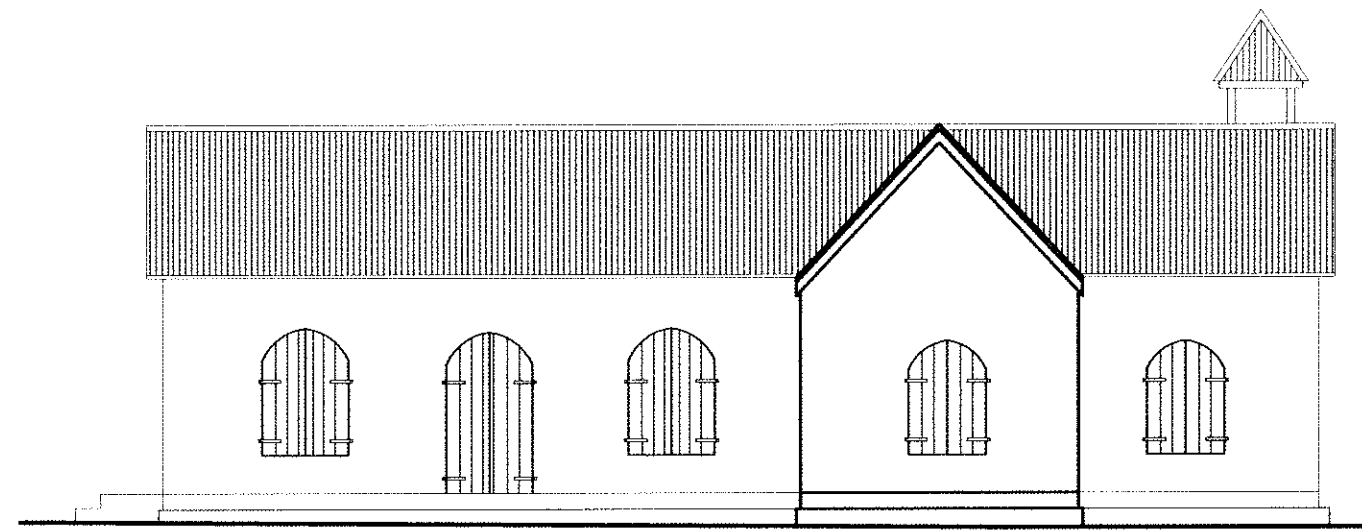
**SITE
PLAN**

& EXTERIOR ELEVATIONS

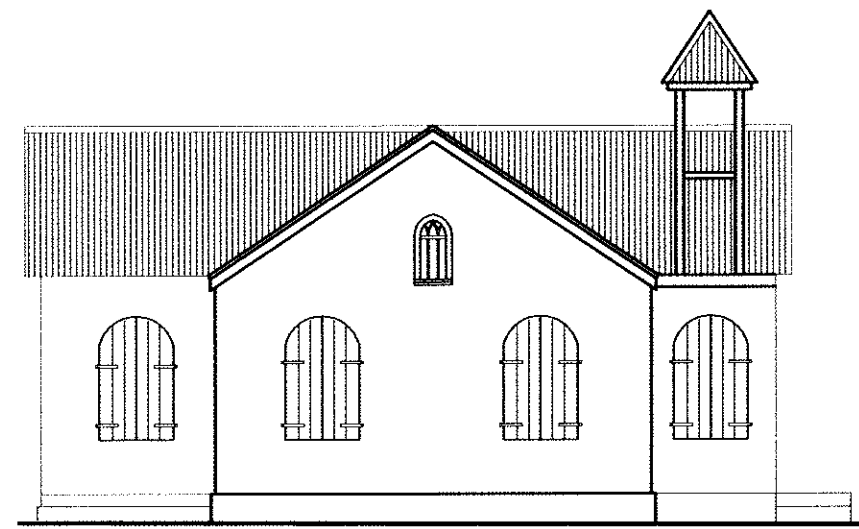
DATE: MARCH 15, 2006

1

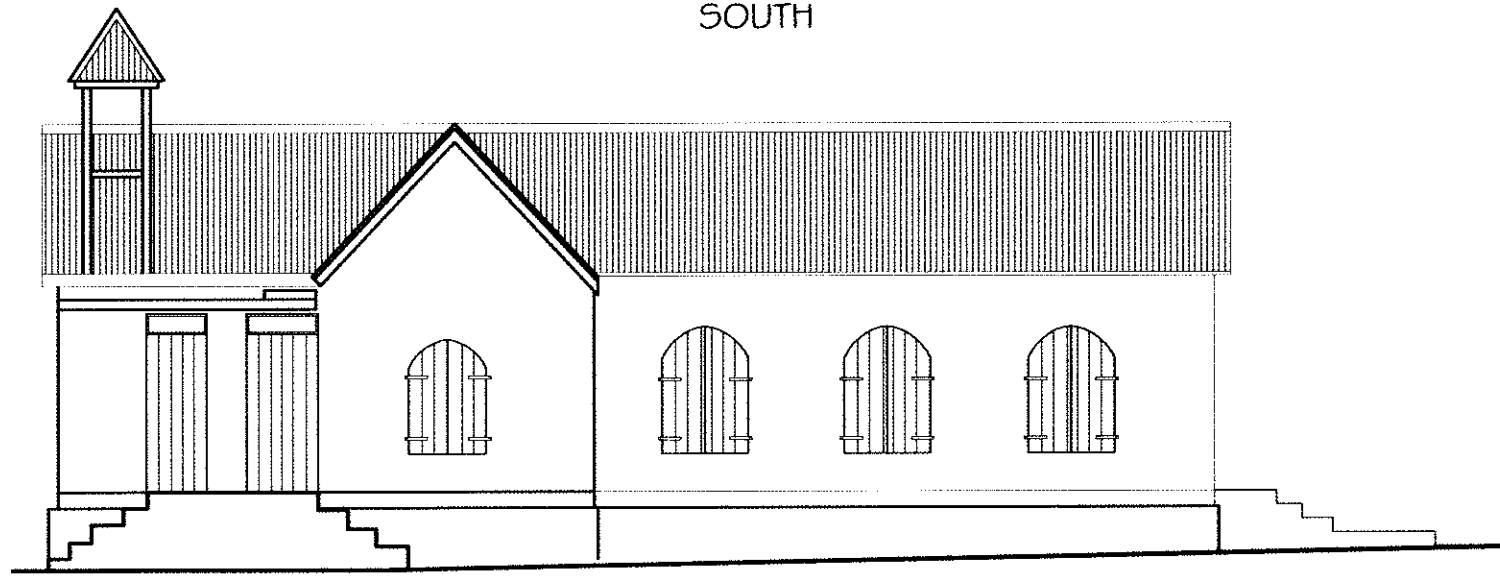
SHEET: OF:



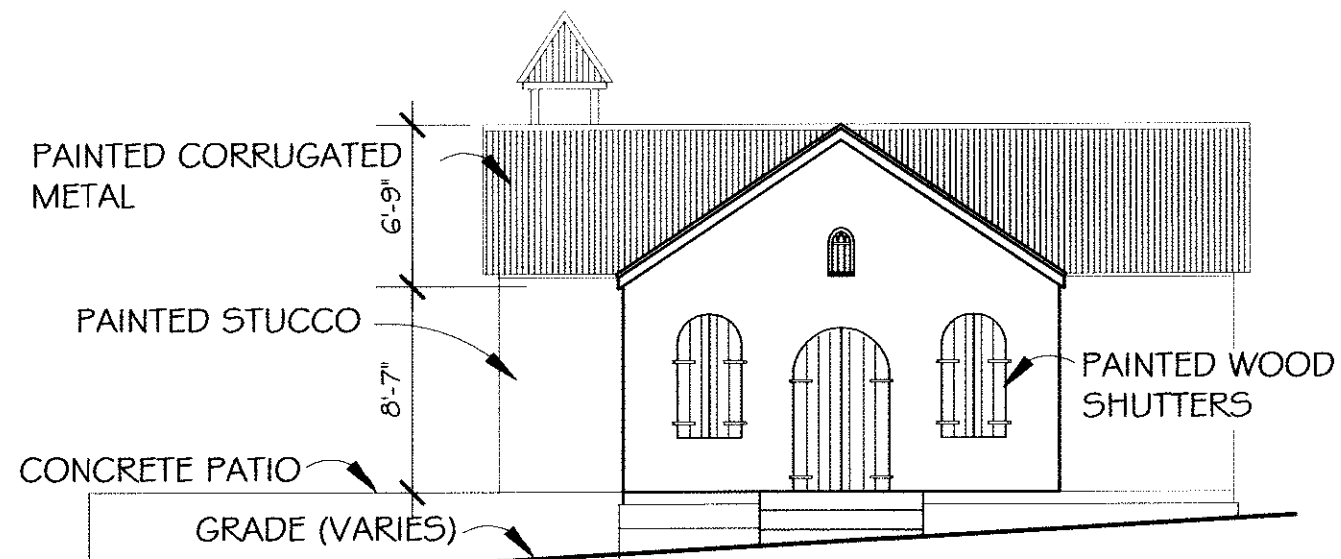
EAST



SOUTH

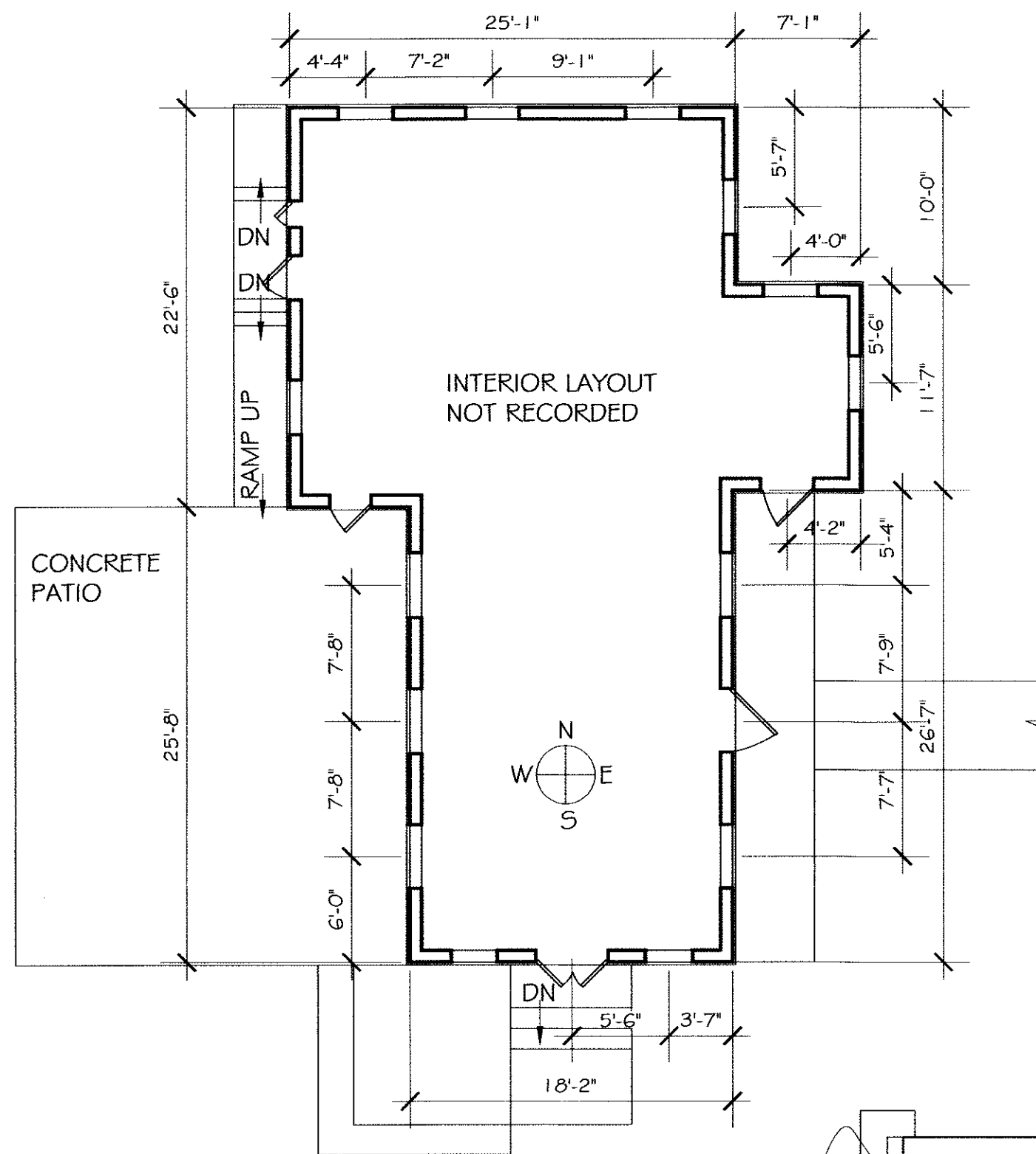


WEST



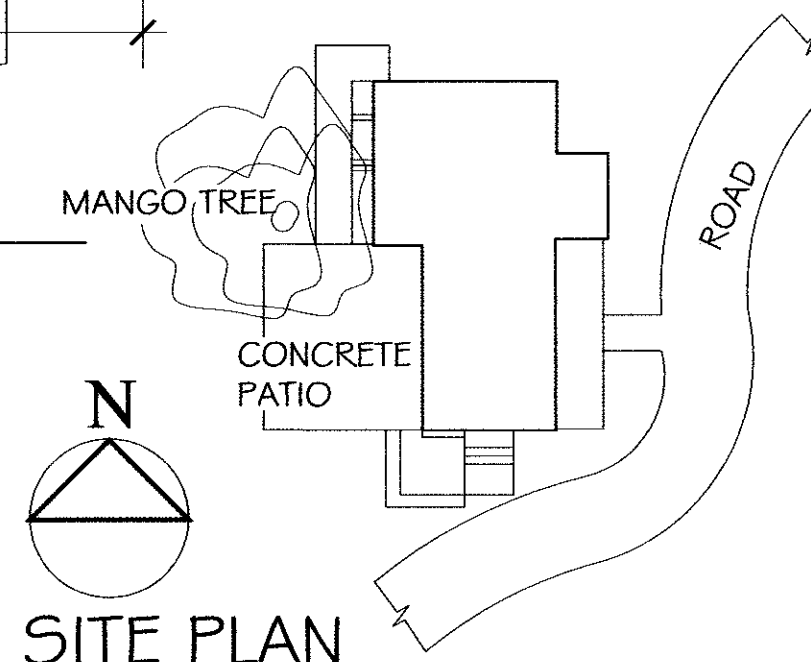
ELEVATIONS

1/8" = 1'-0"

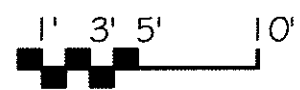


FLOOR PLAN

1/8" = 1'-0"



SITE PLAN
NOT TO SCALE



THESE DRAWINGS ARE THE RESULT OF FIELD MEASUREMENTS TAKEN IN THE WEEK OF 27 FEB - 3 MAR, 2005 BY ELDERHOSTEL VOLUNTEERS. THEY ARE NEITHER COMPLETE NOR ENTIRELY ACCURATE, HENCE "PHASE 1". THEY ARE SUBJECT TO FURTHER FIELD VERIFICATION AND RECORDING OF DIMENSIONS, MATERIALS AND DETAIL.

HISTORIC BUILDING INVENTORY
IN THE
BRITISH VIRGIN ISLANDS

PROVIDED BY ELDERHOSTEL VOLUNTEER GROUP
PROGRAM 11533-022705, FEB-MAR, 2005
THE METHODIST CHURCHES OF TORTOLA
MEASURED DRAWINGS, PHASE 1
SPONSORED BY THE BV HISTORIC TRUST
& LAVITY STOUTT COLLEGE OF BV
CARIBBEAN VOLUNTEER EXPEDITIONS,
PROGRAM PROVIDER

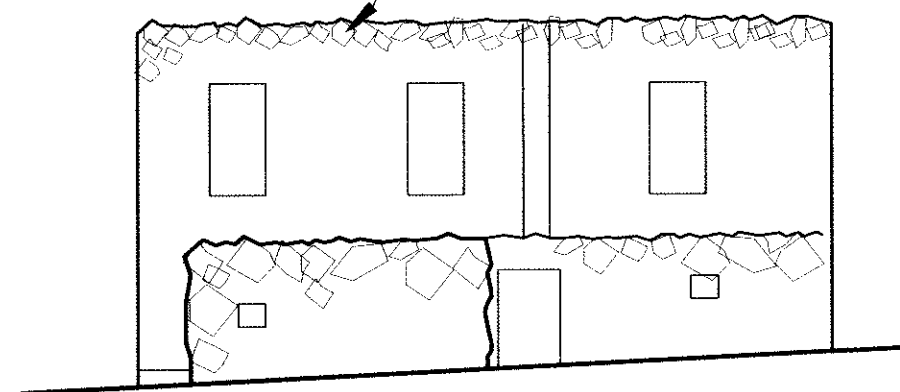
SEA COW METHODIST CHURCH
SITE
PLAN
& EXTERIOR ELEVATIONS

DATE: MARCH 15, 2006

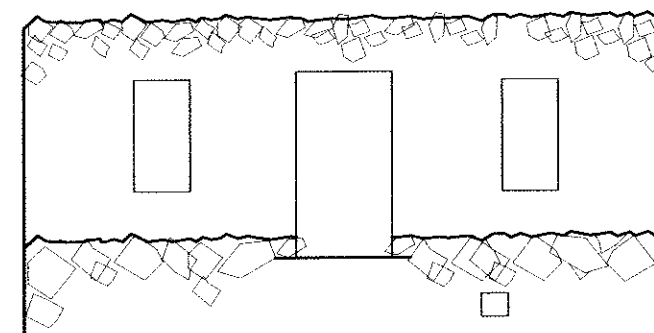
1

SHEET: OF:

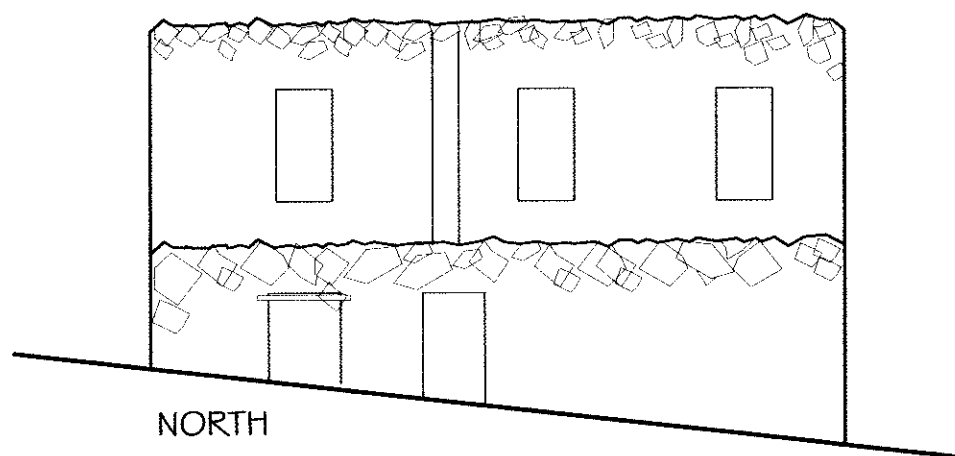
UNCOURSED FIELD
STONE
WALLS--20" THICK, TYP.



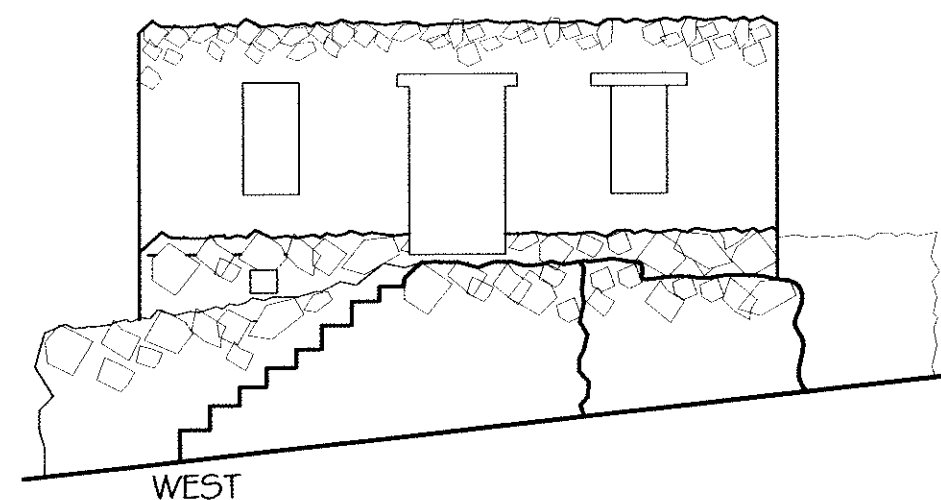
SOUTH



EAST



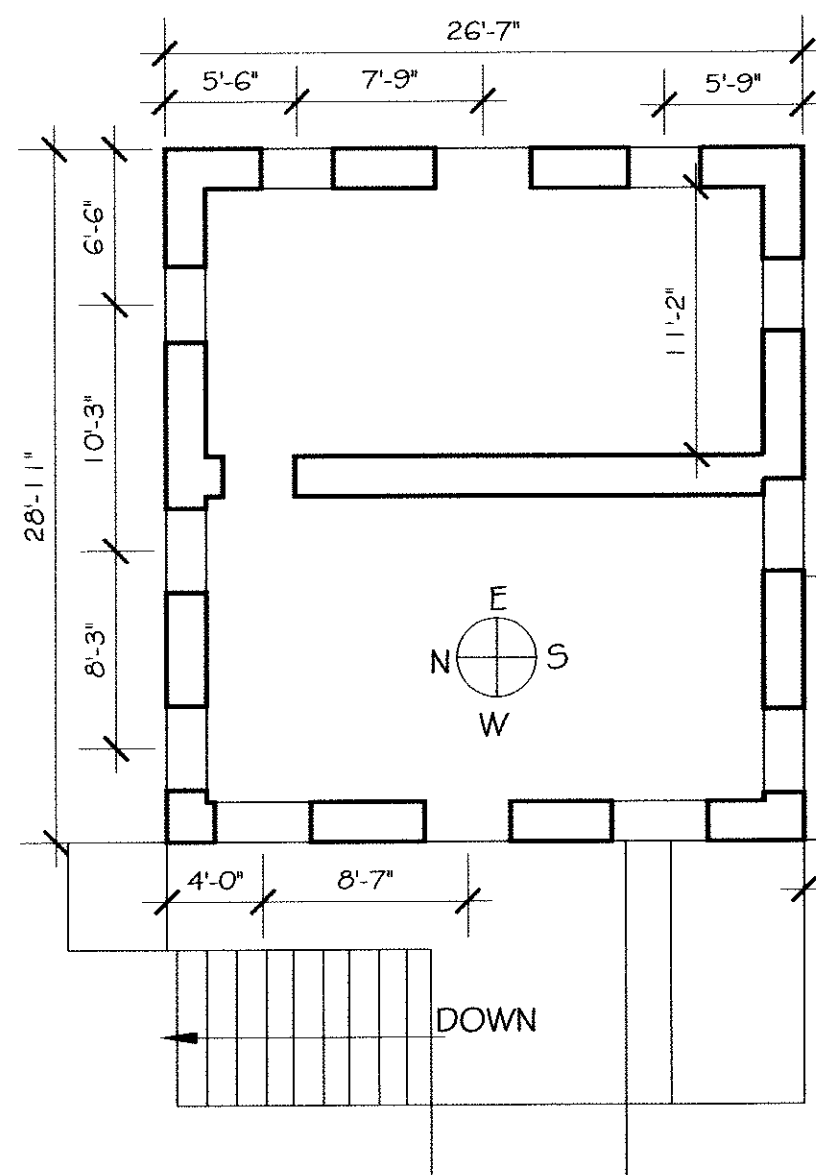
NORTH



WEST

ELEVATIONS

1/8" = 1'-0"



FLOOR PLAN

1/8" = 1'-0"

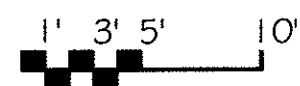
55 DEGREES
TRUE N

GRAVE YARD

NO SCALE

GRAVE
GRAVE
GRAVE
GRAVE
GRAVE

CACTUS
LOW STONE RETAINING
OR FOUNDATION WALL



THESE DRAWINGS ARE THE RESULT OF FIELD MEASUREMENTS TAKEN IN THE WEEK OF 27 FEB - 3 MAR, 2005 BY ELDERHOSTEL VOLUNTEERS. THEY ARE NEITHER COMPLETE NOR ENTIRELY ACCURATE, HENCE "PHASE 1". THEY ARE SUBJECT TO FURTHER FIELD VERIFICATION AND RECORDING OF DIMENSIONS, MATERIALS AND DETAIL.

HISTORIC BUILDING INVENTORY
IN THE
BRITISH VIRGIN ISLANDS

THE METHODIST CHURCHES OF TORTOLA
MEASURED DRAWINGS, PHASE 1
SPONSORED BY THE BVI HISTORIC TRUST
& LAVITY STOUTT COLLEGE OF BVI

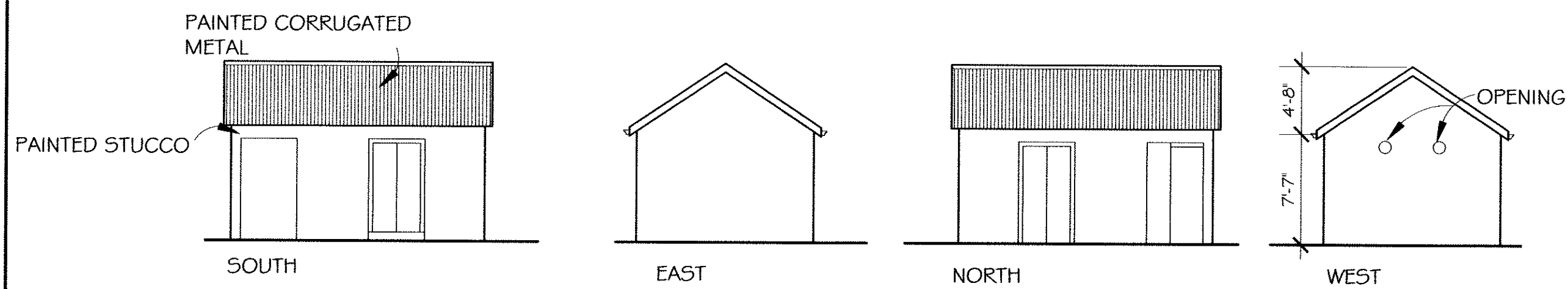
PROVIDED BY ELDERHOSTEL VOLUNTEER GROUP
PROGRAM 11533-022705, FEB-MAR, 2005
CARIBBEAN VOLUNTEER EXPEDITIONS,
PROGRAM PROVIDER

"GREAT HOUSE"
SOUTH OF EAST END METHODIST CHURCH
PLAN & EXTERIOR ELEVATIONS

DATE: MARCH 15, 2006

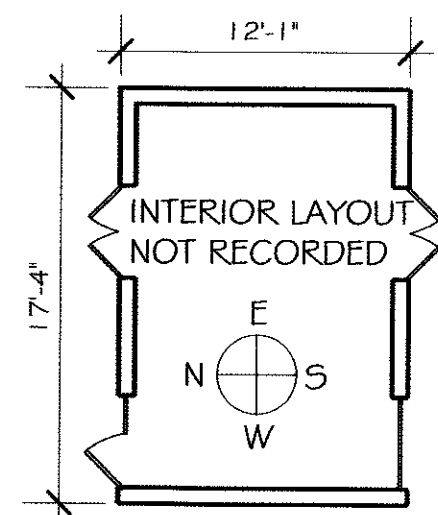
1

SHEET: OF:



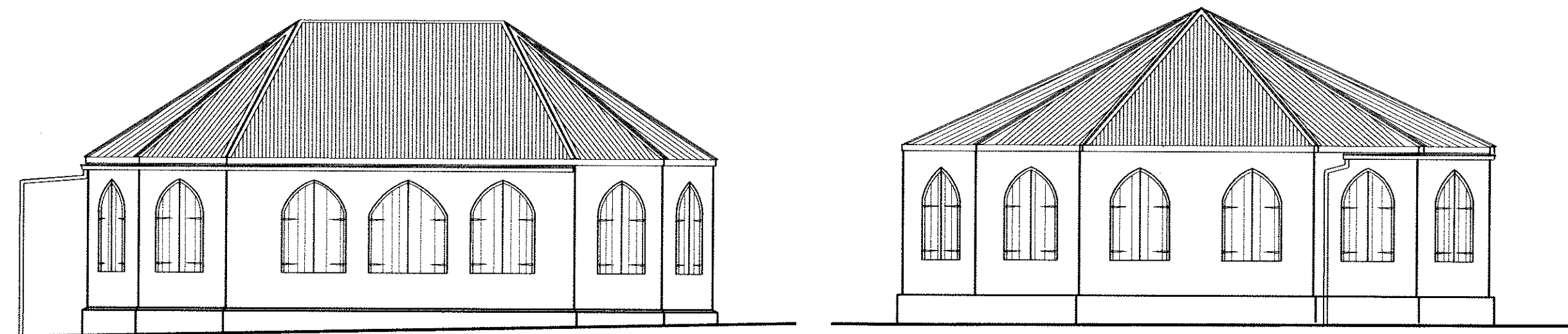
ELEVATIONS--OUTBUILDING

1/8" = 1'-0"



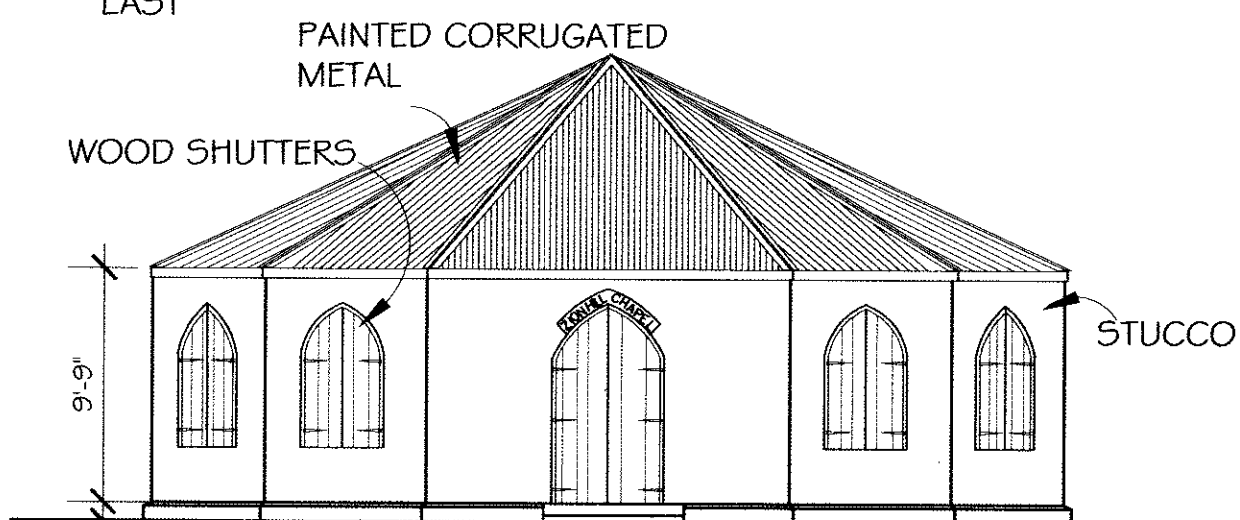
FLOOR PLAN--OUTBUILDING

1/8" = 1'-0"



EAST

SOUTH

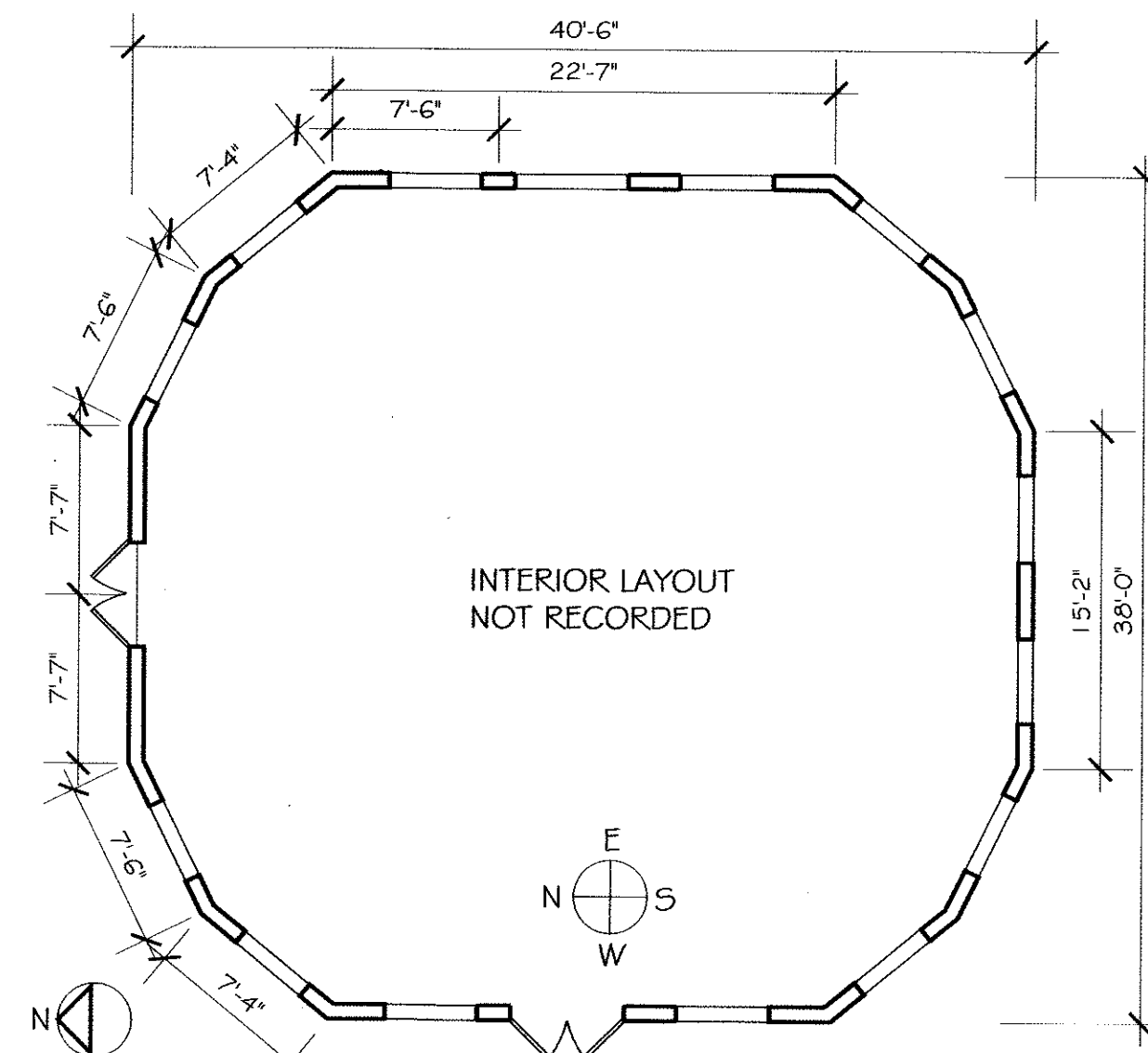


NORTH

WEST

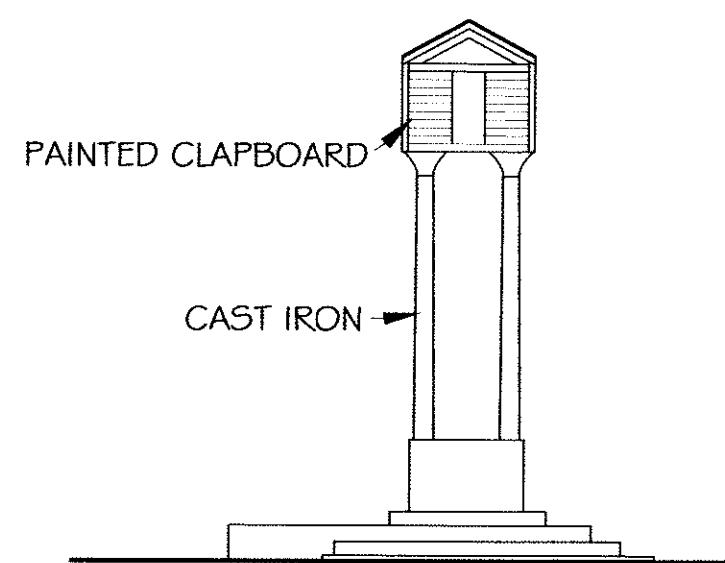
ELEVATIONS--CHURCH

1/8" = 1'-0"



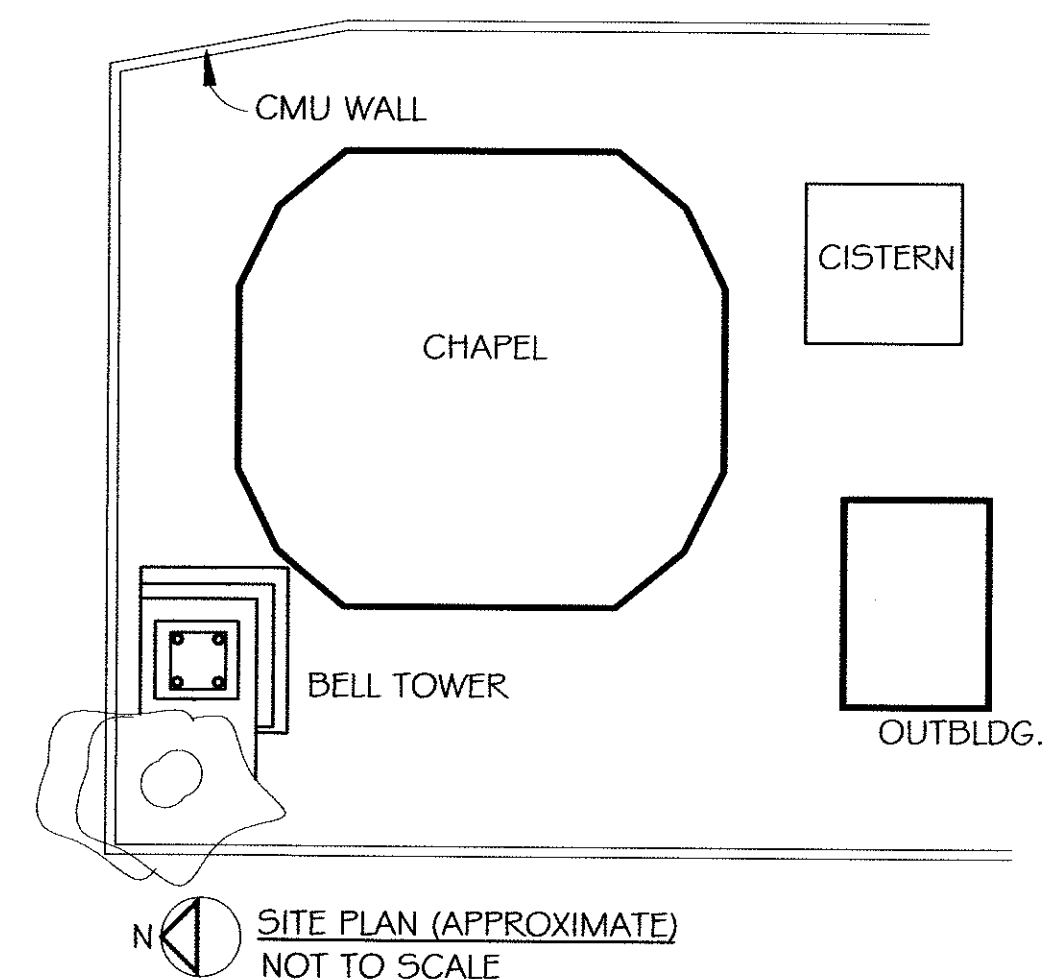
FLOOR PLAN--CHURCH

1/8" = 1'-0"

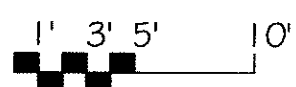


BELL TOWER SOUTH

1/8" = 1'-0"



SITE PLAN (APPROXIMATE)
NOT TO SCALE



THESE DRAWINGS ARE THE RESULT OF FIELD MEASUREMENTS TAKEN IN THE WEEK OF 27 FEB - 3 MAR, 2005 BY ELDERHOSTEL VOLUNTEERS. THEY ARE NEITHER COMPLETE NOR ENTIRELY ACCURATE, HENCE "PHASE 1". THEY ARE SUBJECT TO FURTHER FIELD VERIFICATION AND RECORDING OF DIMENSIONS, MATERIALS AND DETAIL.

HISTORIC BUILDING INVENTORY
IN THE
BRITISH VIRGIN ISLANDS

THE METHODIST CHURCHES OF TORTOLA
MEASURED DRAWINGS, PHASE 1
PROVIDED BY ELDERHOSTEL VOLUNTEER GROUP
PROGRAM 11533-022705, FEB-MAR, 2005
SPONSORED BY THE BVI HISTORIC TRUST
& LAVITY STOUTT COLLEGE OF BVI
CARIBBEAN VOLUNTEER EXPEDITIONS,
PROGRAM PROVIDER

ZION HILL METHODIST CHAPEL
SITE
PLAN
& EXTERIOR ELEVATIONS

DATE: MARCH 15, 2006

1

SHEET: OF: