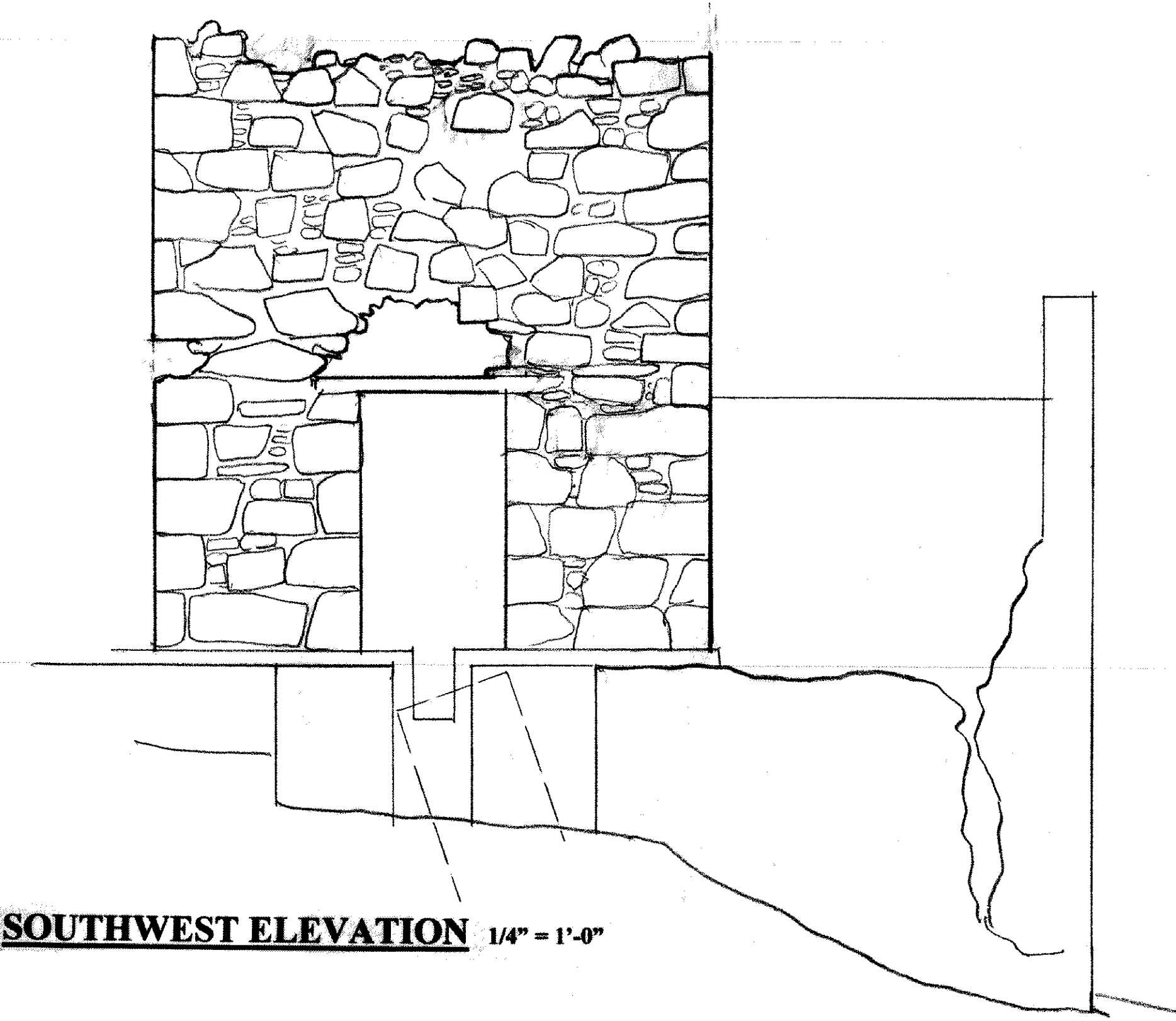
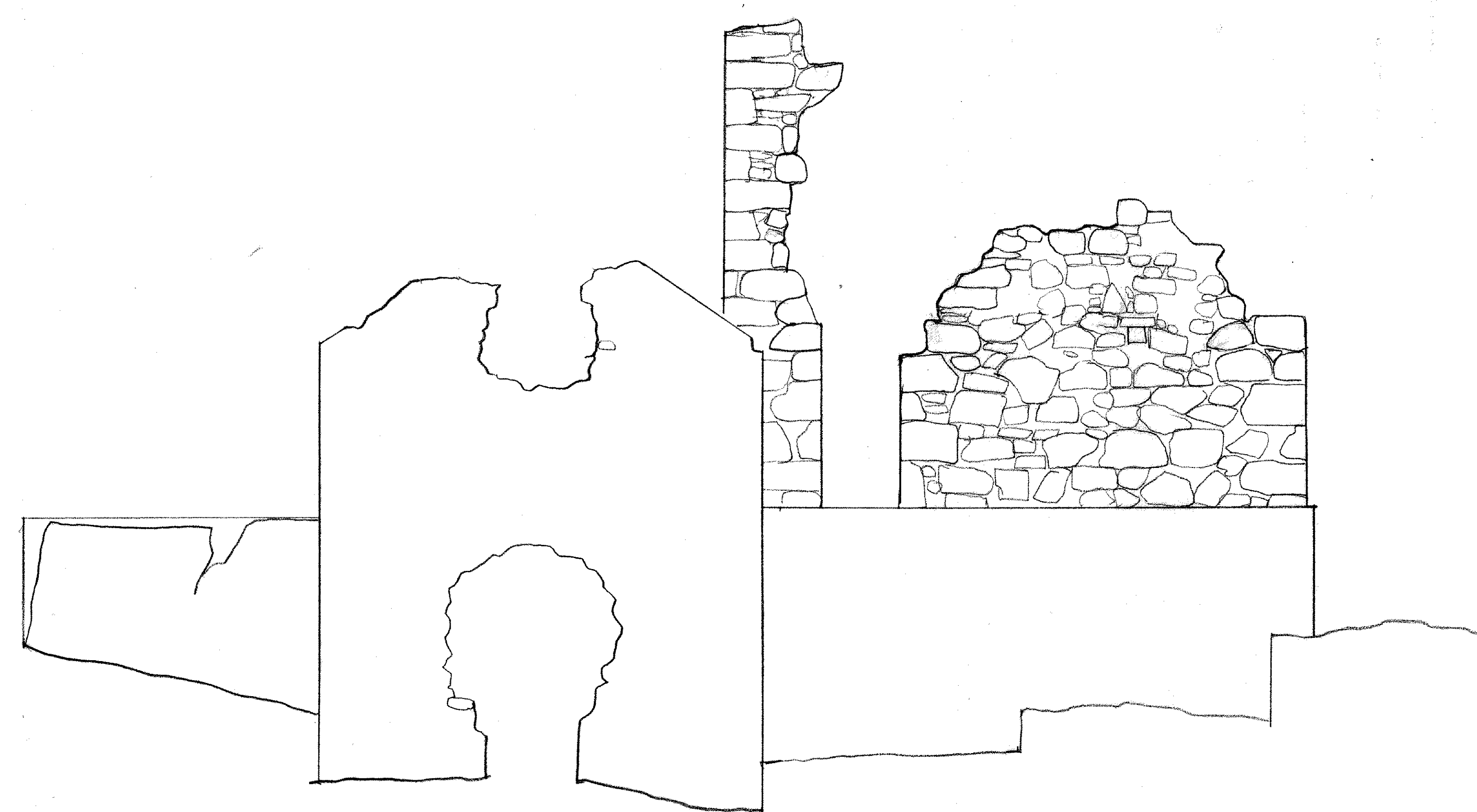


**NORTHWEST ELEVATION** 1/4" = 1'-0"



**SOUTHWEST ELEVATION** 1/4" = 1'-0"



**SOUTHEAST ELEVATION** 1/4" = 1'-0"

**Crushing Plant Elevations** June 1994  
**The Copper Mine**  
**Virgin Gorda**  
**British Virgin Islands**

**CVE**  
CARIBBEAN VOLUNTEER EXPEDITIONS  
BOX 388, CORNING, NEW YORK 14830 607 962 7846

These drawings are based on the March 1988 drawings of  
F. C. Gjessing, Architect, St. Thomas, USVI